



TOYOTA

2024 Corolla

2024 COROLLA

Treat every day like a getaway.

The stylish 2024 Corolla and efficient 2024 Corolla Hybrid are a sharp turn toward the future. With sleek design, the latest tech and standard Toyota Safety Sense™ 3.0,¹ the 2024 Toyota Corolla lineup is ready to create something unforgettable.



See numbered footnotes in Disclosures section.

EXTERIOR

A good-looking reason to go out.

Corolla's sporty design speaks for itself. At first glance, its athletic sport mesh grille grabs your attention and from the side, available 18-in. graphite-colored alloy wheels² complement the sleek lines of its profile. You might not be someone to show off, but with Corolla, you'll always show up.



XSE shown in Celestite.



18-in. graphite-colored alloy wheels

The available 18-in. graphite-colored alloy wheels,² add to its unapologetic profile. Every stoplight is a chance to turn heads. Every spoke on the wheels is crafted to enhance style.



Dark gray metallic sport accents

With an available dark gray metallic rear spoiler, diffuser and side rocker panels, you'll make a powerful impression wherever you pull up.



Aggressive sporty front fascia

Highlighted by an available sport mesh grille, Corolla's low, wide and aggressive stance stands out for all the right reasons. Its refreshed look will make all eyes linger on you during your commute.

NIGHTSHADE

Dressed to impress.

Available Corolla Nightshade and Corolla Hybrid Nightshade are ready to deliver style that makes a statement. Blackout badging, mirror caps and rear spoiler command attention, while bronze-finished 18-in. alloy wheels² complete the sharp look.



Hybrid Nightshade AWD shown in Midnight Black Metallic.

PERFORMANCE

More reasons to take the long way home.

Corolla's low platform is purposefully designed to give it a responsive and energetic drive, while a lightweight body helps optimize efficiency. Under the hood, its 2.0L Dynamic Force Engine with 169 horsepower — with Dynamic-Shift CVT and available paddle shifters — wakes up your senses every time you step on the accelerator. Saying Corolla is "fun to drive" is an understatement.

Paddle shifters

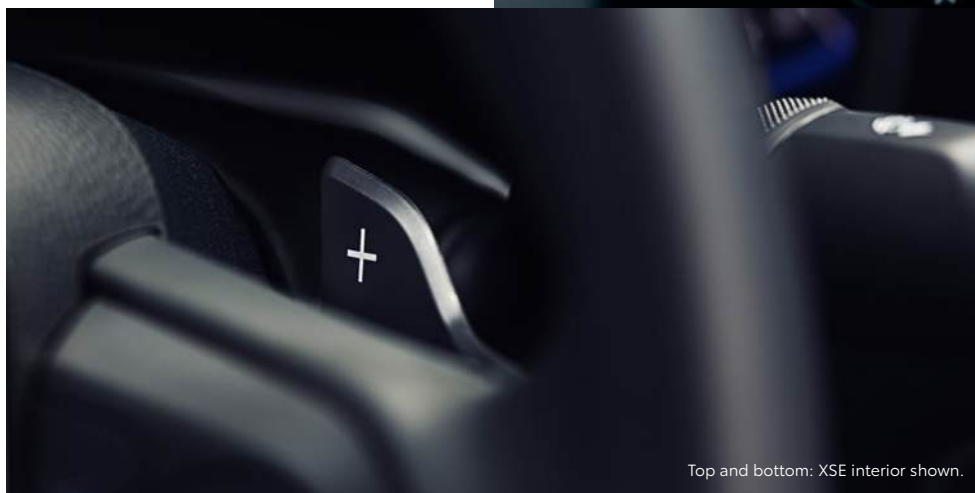
Corolla's available steering wheel-mounted paddle shifters let you shift gears without letting go of the wheel. A light touch on either lever gives you lightning-fast gear changes for a more engaged drive.

2.0L Dynamic Force Engine

Corolla's efficient, 2.0L Dynamic Force Engine produces 169 horsepower paired with a Dynamic-Shift CVT — combining the immediate response of a traditional fixed first gear with the efficiency of a Continuously Variable Transmission (CVT).

Drive modes

Three distinct available drive modes give you even more control, just by a flip of a switch. Sport Mode indulges your spirited side with a sharper acceleration feel, while Eco Mode adjusts climate control and throttle input to help maximize your efficiency. Normal Mode blends fuel economy with performance.



Top and bottom: XSE interior shown.



LE shown in Wind Chill Pearl.³

See numbered footnotes in Disclosures section.

INTERIOR

Fun for all five senses.

Inside, Corolla's 60/40 split fold-down rear seat lets you create the right amount of space for wherever you're headed. Behind the vents, an automatic climate control system cools down and heats up Corolla, while its available moonroof opens up the cabin. Corolla's interior is modern, sleek and makes a great first impression.



Hybrid SE AWD interior shown in Moonstone fabric.

Interior styling

The stylish details continue inside with Corolla's driver-focused cockpit that flaunts available sport seats.

Spacious interior and SofTex®-trimmed sport seats

Corolla's relaxing and open interior surrounds you with comfort and convenience. Available sport seats with SofTex®-trimmed⁴ bolsters and sport fabric inserts work together to make you feel comfortable and in control behind the wheel.



XSE interior shown in Black SofTex®⁴ trim.



Hybrid SE AWD shown in Ruby Flare Pearl.³

COROLLA HYBRID

Efficiency meets style.

Corolla Hybrid has all the efficiencies of a hybrid with the same sleek look and refined interior as its gas counterpart. Along with advanced tech like an 8-in. touchscreen display with wireless Apple CarPlay^{®5} compatibility or Android Auto^{™6} integration, its intelligent hybrid drivetrain gives you more reasons to take the long way home. Corolla Hybrid lets you go farther in everything you do.

Up to
50
combined
manufacturer-est. mpg⁷



Hybrid Nightshade AWD shown in Midnight Black Metallic.

See numbered footnotes in Disclosures section.



Hybrid SE AWD shown in Ruby Flare Pearl.³

COROLLA HYBRID

Bring confidence along for the ride.

Feel Corolla Hybrid's impressive performance with every twist and turn. Its optimal weight distribution and handling paired with innovative available AWD makes it a dynamic duo for a smooth drive. Kick it up a notch in this fun ride with 138 horsepower, you'll get power hungry in no time.



Available AWD

The power of an intelligent grip. Corolla Hybrid's available Electronic On-Demand All-Wheel Drive (AWD) provides all-weather capability and confident on-road driving dynamics. The system uses a dedicated electric drive motor to automatically supply power to the rear wheels for instant improvement in traction.

Technology that keeps up with you.

Take advantage of smart and convenient technologies designed to simplify your everyday life. Trial periods are available on select models for the listed Connected Services.*⁸ 4G network dependent.



Toyota App

With active applicable Connected Services⁸ subscriptions, the Toyota app⁹ allows you to stay connected to your Corolla wherever you go. Available for Apple^{®10} and Android^{™11} devices.

- ✓ Available Remote Vehicle Start¹² and Lock/Unlock Doors
- ✓ Check Up on Your Toyota's Health
- ✓ Schedule a Service Appointment
- ✓ Shop for Genuine Toyota Parts and Accessories
- ✓ Make a Payment With Your TFS Account



Safety Connect[®]

Round-the-clock help when the unexpected happens.¹³

- ✓ Emergency (SOS) Assistance
- ✓ Enhanced Roadside Assistance¹⁴
- ✓ Automatic Collision Notification
- ✓ Stolen Vehicle Locator¹⁵



Service Connect

Being proactive to help keep your vehicle in peak condition.¹⁶

- ✓ Vehicle Health Report
- ✓ Vehicle Maintenance Alert
- ✓ Maintenance Reminder



Wi-Fi Connect

Turn your Toyota into a hotspot with 4G connectivity.¹⁷

- ✓ AT&T Hotspot
- ✓ Integrated Streaming
 - Apple Music^{®18} (separate subscription required)
 - Amazon Music¹⁹ (separate subscription required)



Drive Connect

Navigation solutions that use the latest maps, voice commands and live agent assistance.²⁰

- ✓ Cloud Navigation²¹
- ✓ Destination Assist²²
- ✓ Intelligent Assistant²³



Available Remote Connect

Manage your vehicle through the Toyota app.²⁴

- ✓ Available Remote Vehicle Start
- ✓ Available Unlock/Lock
- ✓ Remote Notifications
- ✓ Guest Driver
- ✓ Smartwatch Compatibility

*To view included trial details, please visit toyota.com/connected-services.

Feature availability may vary by model grade. See numbered footnotes in Disclosures section.



AUDIO MULTIMEDIA

Amplify your drive.

Enhance every drive with an experience that's all about you. Whether enjoying the sounds of your favorite soundtrack or interacting with an interface that you're familiar with, you'll always be surrounded by convenience.



Wireless Apple CarPlay®

Bring along a familiar face. With Corolla's Apple CarPlay^{®5} compatibility, you can use your compatible iPhone^{®25} with the multimedia system to get directions, make calls, send and receive messages and listen to music, all while staying focused behind the wheel.



Wireless Android Auto™

Stay connected on the road. Connect your compatible Android™¹¹ phone to activate Android Auto™⁶ compatibility and get your favorite music, media, messaging, and navigation apps on your vehicle's display and stay connected while driving.



SiriusXM® Platinum Plan 3-month trial

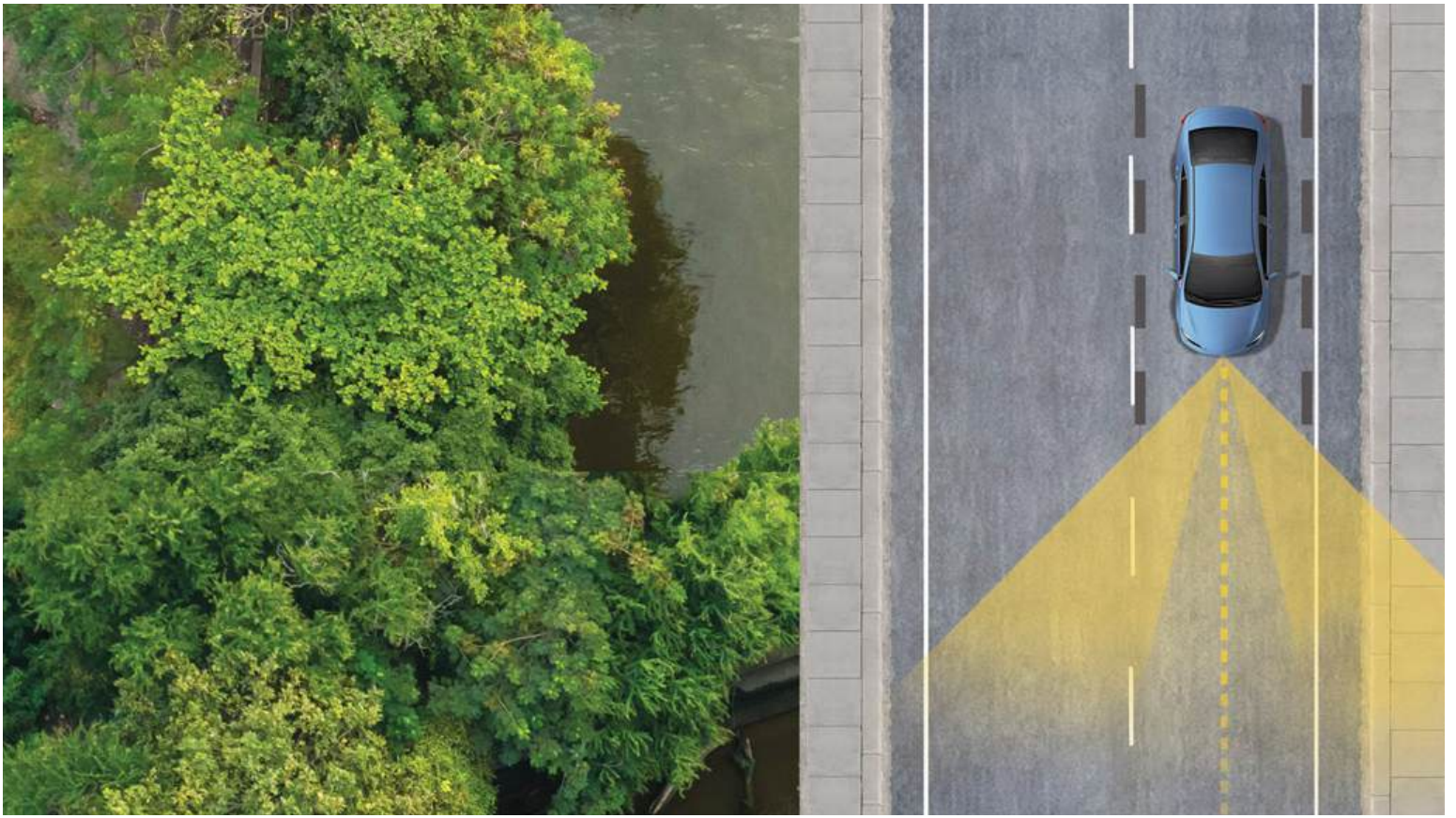
With the SiriusXM Platinum Plan²⁶ 3-month trial,²⁷ you get 425+ channels, including 165+ channels in your vehicle, to listen to ad-free music, plus sports, news, comedy and more. Innovative features in the Corolla make it even easier than ever before to search, discover and listen through personalized channel recommendations curated just "For You." Plus, the Live Sports category puts all your games and teams in one place for easy access.



JBL® Premium Audio

Immerse yourself in quality sound with Corolla's available JBL^{®28} Premium Audio system. A 9-speaker, 800-watt audio system, equipped with a subwoofer and amplifier, it provides phenomenal sound that amplifies every drive.

Feature availability may vary by model grade. Screen depictions accurate at time of posting. See numbered footnotes in Disclosures section.



TOYOTA SAFETY SENSE™ 3.0

Peace of mind comes standard.

Toyota Safety Sense™ 3.0¹ is a bundle of active safety features included on many new Toyota vehicles at no additional cost. These innovative features were designed to help protect you and your passengers from harm.



Pre-Collision System with Pedestrian Detection²⁹



Proactive Driving Assist³⁰



Full-Speed Range Dynamic Radar Cruise Control³¹



Lane Departure Alert with Steering Assist³²



Automatic High Beams³³



Lane Tracing Assist³⁴



Road Sign Assist³⁵

COROLLA MODELS



LE

Includes these key features

Mechanical/Performance

- ✓ 2.0L 4-cylinder Dynamic Force Engine with 169 hp @ 6600 rpm
- ✓ Dynamic-Shift Continuously Variable Transmission (CVT)
- ✓ Front-Wheel Drive (FWD)
- ✓ 32 city/41 highway/35 combined est. mpg³⁶

Exterior Features

- ✓ LED headlights, LED taillights, and Daytime Running Lights (DRL)
- ✓ 16-in. steel wheels with covers
- ✓ Color-keyed roof-mounted shark-fin antenna

Interior Features

- ✓ Automatic climate control
- ✓ 4.2-in. Multi-Information Display (MID)
- ✓ Fabric-trimmed seats include:
 - 60/40 split fold-down rear seat with center armrest
- ✓ Multi-function in-key remote keyless entry system

Audio Multimedia

- ✓ Toyota Audio Multimedia
 - 8-in. touchscreen and six speakers
 - Wireless Apple CarPlay^{®5} & Android Auto^{™6} compatible
 - SiriusXM^{®26} with 3-month Platinum Plan trial subscription²⁷
- ✓ Safety Connect^{®13} with up to 10-year trial; 4G network dependent
- ✓ Service Connect^{®16} with up to 10-year trial; 4G network dependent

Safety Features

- ✓ Toyota Safety Sense[™] 3.0¹
- ✓ Star Safety System[™]
- ✓ Ten airbags³⁷

Packages

- ✓ LE Convenience Package includes:
 - Smart Key System with Push Button Start
 - Blind Spot Monitor (BSM)³⁸ with Rear Cross-Traffic Alert (RCTA)³⁹
 - 16-in. alloy wheels
- ✓ LE Premium Package includes:
 - Smart Key System with Push Button Start
 - 16-in. alloy wheels
 - Leather-trimmed tilt/telescopic 3-spoke steering wheel
 - Qi-compatible wireless smartphone charging⁴⁰
 - Blind Spot Monitor (BSM)³⁸ with Rear Cross-Traffic Alert (RCTA)³⁹
 - Power tilt/slide moonroof with sliding sunshade



SE

Adds to or replaces features offered on LE

Mechanical/Performance

- ✓ 2.0L 4-cylinder Dynamic Force Engine with 169 hp @ 6600 rpm
- ✓ Normal, Sport and Eco driving modes
- ✓ Dynamic-Shift Continuously Variable Transmission (CVT)
- ✓ Front-Wheel Drive (FWD)
- ✓ 31 city/40 highway/34 combined est. mpg³⁶

Exterior Features

- ✓ LED headlights, LED taillights and Daytime Running Lights (DRL) accent lighting
- ✓ Sport mesh gloss black front grille
- ✓ Gray metallic sport side rocker panels and color-keyed spoiler
- ✓ 18-in. graphite-colored alloy wheels²
- ✓ Single exhaust with dual chrome tips

Interior Features

- ✓ Sport seats with sport fabric inserts
- ✓ 4.2-in. Multi-Information Display (MID)
- ✓ Smart Key System with Push Button Start

Audio Multimedia

- ✓ Toyota Audio Multimedia
 - 8-in. touchscreen and six speakers
 - Wireless Apple CarPlay^{®5} & Android Auto^{™6} compatible
 - SiriusXM^{®26} with 3-month Platinum Plan trial subscription²⁷
- ✓ Safety Connect^{®13} with up to 10-year trial; 4G network dependent
- ✓ Service Connect^{®16} with up to 10-year trial; 4G network dependent

Safety Features

- ✓ Toyota Safety Sense[™] 3.0¹
- ✓ Star Safety System[™]
- ✓ Ten airbags³⁷

Packages/Options

- ✓ SE Convenience Package includes:
 - Blind Spot Monitor (BSM)³⁸ with Rear Cross-Traffic Alert (RCTA)³⁹
- ✓ SE Premium Package includes:
 - Blind Spot Monitor (BSM)³⁸ with Rear Cross-Traffic Alert (RCTA)³⁹
 - Power tilt/slide moonroof with sliding sunshade
 - Qi-compatible wireless smartphone charging⁴⁰



NIGHTSHADE

Adds to or replaces features offered on SE

Mechanical/Performance

- ✓ 2.0L 4-cylinder Dynamic Force Engine with 169 hp @ 6600 rpm
- ✓ Normal, Sport and Eco driving modes
- ✓ Dynamic-Shift Continuously Variable Transmission (CVT)
- ✓ Front-Wheel Drive (FWD)
- ✓ 31 city/40 highway/34 combined est. mpg³⁶

Exterior Features

- ✓ LED headlights, LED taillights, and Daytime Running Lights (DRL) accent lighting
- ✓ Black heated power outside mirrors
- ✓ Sport mesh gloss black front grille
- ✓ Black-painted sport side rocker panels and rear spoiler
- ✓ 18-in. bronze-finished alloy wheels²
- ✓ Blackout badging
- ✓ Single exhaust with dual chrome tips
- ✓ Black roof-mounted shark-fin antenna

Interior Features

- ✓ Sport seats with sport fabric inserts
- ✓ 4.2-in. color TFT Multi-Information Display (MID)
- ✓ Smart Key System with Push Button Start

Audio Multimedia

- ✓ Toyota Audio Multimedia
 - 8-in. touchscreen and six speakers
 - Wireless Apple CarPlay^{®5} & Android Auto^{™6} compatible
 - SiriusXM^{®26} with 3-month Platinum Plan trial subscription²⁷
- ✓ Safety Connect^{®13} with up to 10-year trial; 4G network dependent
- ✓ Service Connect^{®16} with up to 10-year trial; 4G network dependent

Safety Features

- ✓ Toyota Safety Sense[™] 3.0¹
- ✓ Star Safety System[™]
- ✓ Ten airbags³⁷

Packages/Options

- ✓ SE Convenience Package includes:
 - Blind Spot Monitor (BSM)³⁸ with Rear Cross-Traffic Alert (RCTA)³⁹
- ✓ JBL^{®28} Premium Audio includes:
 - Nine JBL^{®28} speakers including subwoofer and amplifier

COROLLA MODELS



XSE

Adds to or replaces features offered on SE

Mechanical/Performance

- ✓ 2.0L 4-cylinder Dynamic Force Engine with 169 hp @ 6600 rpm
- ✓ Normal, Sport and Eco driving modes
- ✓ Dynamic-Shift Continuously Variable Transmission (CVT)
- ✓ Front-Wheel Drive (FWD)
- ✓ 31 city/40 highway/34 combined est. mpg³⁶

Exterior Features

- ✓ LED headlights, LED taillights, and Daytime Running Lights (DRL) accent lighting
- ✓ Power tilt/slide moonroof with sliding sunshade
- ✓ Gray metallic sport side rocker panels and rear spoiler

Interior Features

- ✓ SofTex[®]-trimmed⁴ seats
 - Heated front seats with sport fabric inserts
- ✓ Steering-wheel-mounted paddle shifters
- ✓ 7-in. Fully Digital Gauge Cluster
- ✓ Smart Key System with Push Button Start
- ✓ Qi-compatible wireless smartphone charging⁴⁰

Audio Multimedia

- ✓ Toyota Audio Multimedia
 - 8-in. touchscreen and six speakers
 - Wireless Apple CarPlay^{®5} & Android Auto^{™6} compatible
 - SiriusXM^{®26} with 3-month Platinum Plan trial subscription²⁷
- ✓ Safety Connect^{®13} with up to 10-year trial; 4G network dependent
- ✓ Service Connect^{®16} with up to 10-year trial; 4G network dependent

Safety Features

- ✓ Toyota Safety Sense[™] 3.0¹
- ✓ Star Safety System[™]
- ✓ Ten airbags³⁷
- ✓ Blind Spot Monitor (BSM)³⁸ with Rear Cross-Traffic Alert (RCTA)³⁹

Packages/Options

- ✓ JBL^{®28} Premium Audio includes:
 - Nine JBL^{®28} speakers including subwoofer and amplifier

COROLLA HYBRID MODELS



HYBRID LE

Includes these key features

Mechanical/Performance

- ✓ 1.8L 4-cylinder engine with 138 hp
- ✓ Electronically controlled Continuously Variable Transmission (ECVT)
- ✓ Front-Wheel Drive (FWD)
- ✓ Available Electronic On-Demand All-Wheel Drive (AWD)
- ✓ Up to 53 city/46 highway/50 combined est. mpg⁷

Exterior Features

- ✓ 16-in. steel wheels with covers
- ✓ LED headlights, LED taillights, and Daytime Running Lights (DRL)
- ✓ Color-keyed roof-mounted shark-fin antenna

Interior Features

- ✓ Automatic climate control
- ✓ 4.2-in. Multi-Information Display (MID)
- ✓ Fabric-trimmed seats include:
 - 60/40 split fold-down rear seat with center armrest
- ✓ Multi-function in-key remote keyless entry system

Audio Multimedia

- ✓ Toyota Audio Multimedia
 - 8-in. touchscreen and six speakers
 - Wireless Apple CarPlay^{®5} & Android Auto^{™6} compatible
 - SiriusXM^{®26} with 3-month Platinum Plan trial subscription²⁷
- ✓ Safety Connect^{®13} with up to 10-year trial; 4G network dependent
- ✓ Service Connect^{®16} with up to 10-year trial; 4G network dependent

Safety Features

- ✓ Toyota Safety Sense[™] 3.0¹
- ✓ Star Safety System[™]
- ✓ Ten airbags³⁷

Packages

- ✓ LE Convenience Package includes:
 - Smart Key System with Push Button Start
 - Blind Spot Monitor (BSM)³⁸ with Rear Cross-Traffic Alert (RCTA)³⁹
 - 16-in. alloy wheels
- ✓ LE Premium Package includes:
 - Smart Key System with Push Button Start
 - 16-in. alloy wheels
 - Leather-trimmed tilt/telescopic 3-spoke steering wheel
 - Qi-compatible wireless smartphone charging⁴⁰
 - Blind Spot Monitor (BSM)³⁸ with Rear Cross-Traffic Alert (RCTA)³⁹
 - Power tilt/slide moonroof with sliding sunshade



HYBRID SE

Adds to or replaces features offered on Hybrid LE

Mechanical/Performance

- ✓ 1.8L 4-cylinder engine with 138 hp
- ✓ Normal, Sport and Eco driving modes
- ✓ Electronically controlled Continuously Variable Transmission (ECVT)
- ✓ Front-Wheel Drive (FWD)
- ✓ Available Electronic On-Demand All-Wheel Drive (AWD)
- ✓ Up to 50 city/43 highway/47 combined est. mpg⁷

Exterior Features

- ✓ LED headlights, LED taillights, and Daytime Running Lights (DRL) accent lighting
- ✓ Sport mesh gloss black front grille
- ✓ Gray metallic sport side rocker panels and color-keyed spoiler
- ✓ 18-in. graphite-colored alloy wheels²
- ✓ Single exhaust with dual chrome tips

Interior Features

- ✓ Sport seats with sport fabric inserts
- ✓ 4.2-in. color TFT Multi-Information Display (MID)
- ✓ Smart Key System with Push Button Start

Audio Multimedia

- ✓ Toyota Audio Multimedia
 - 8-in. touchscreen and six speakers
 - Wireless Apple CarPlay^{®5} & Android Auto^{™6} compatible
 - SiriusXM^{®26} with 3-month Platinum Plan trial subscription²⁷
- ✓ Safety Connect^{®13} with up to 10-year trial; 4G network dependent
- ✓ Service Connect^{®16} with up to 10-year trial; 4G network dependent

Safety Features

- ✓ Toyota Safety Sense[™] 3.0¹
- ✓ Star Safety System[™]
- ✓ Ten airbags³⁷

Packages/Options

- ✓ SE Convenience Package includes:
 - Blind Spot Monitor (BSM)³⁸ with Rear Cross-Traffic Alert (RCTA)³⁹
- ✓ SE Premium Package includes:
 - Blind Spot Monitor (BSM)³⁸ with Rear Cross-Traffic Alert (RCTA)³⁹
 - Power tilt/slide moonroof with sliding sunshade
 - Qi-compatible wireless smartphone charging⁴⁰

COROLLA HYBRID MODELS



HYBRID NIGHTSHADE

Adds to or replaces features offered on Hybrid SE

Mechanical/Performance

- ✓ 1.8L 4-cylinder engine with 138 hp
- ✓ Normal, Sport and Eco driving modes
- ✓ Electronically controlled Continuously Variable Transmission (ECVT)
- ✓ Front-Wheel Drive (FWD)
- ✓ Available Electronic On-Demand All-Wheel Drive (AWD)
- ✓ Up to 50 city/43 highway/47 combined est. mpg⁷

Exterior Features

- ✓ LED headlights, LED taillights, and Daytime Running Lights (DRL) accent lighting
- ✓ Black heated power outside mirrors
- ✓ Sport mesh gloss-black front grille
- ✓ Black-painted sport side rocker panels and rear spoiler
- ✓ 18-in. bronze-finished alloy wheels²
- ✓ Blackout badging
- ✓ Single exhaust with dual chrome tips
- ✓ Black roof-mounted shark-fin antenna

Interior Features

- ✓ Sport seats with sport fabric inserts
- ✓ 4.2-in. color TFT Multi-Information Display (MID)
- ✓ Smart Key System with Push Button Start

Audio Multimedia

- ✓ Toyota Audio Multimedia
 - 8-in. touchscreen and six speakers
 - Wireless Apple CarPlay^{®5} & Android Auto^{™6} compatible
 - SiriusXM^{®26} with 3-month Platinum Plan trial subscription²⁷
- ✓ Safety Connect^{®16} with up to 10-year trial; 4G network dependent
- ✓ Service Connect¹¹ with up to 10-year trial; 4G network dependent

Safety Features

- ✓ Toyota Safety Sense[™] 3.0¹
- ✓ Star Safety System[™]
- ✓ Ten airbags³⁷

Packages/Options

- ✓ SE Convenience Package includes:
 - Blind Spot Monitor (BSM)³⁸ with Rear Cross-Traffic Alert (RCTA)³⁹
- ✓ JBL^{®28} Premium Audio includes:
 - Nine JBL^{®28} speakers including subwoofer and amplifier



HYBRID XLE

Adds to or replaces features offered on Hybrid LE

Mechanical/Performance

- ✓ 1.8L 4-cylinder engine with 138 hp
- ✓ Electronically controlled Continuously Variable Transmission (ECVT)
- ✓ Front-Wheel Drive (FWD)
- ✓ 53 city/46 highway/50 combined est. mpg⁷

Exterior Features

- ✓ LED headlights and Daytime Running Lights (DRL)
- ✓ Color-keyed heated power outside mirrors with turn signal indicators
- ✓ Power tilt/slide moonroof with sliding sunshade
- ✓ 16-in. alloy wheels

Interior Features

- ✓ SofTex[®]-trimmed⁴ seats include:
 - Heated front seats
- ✓ Leather-wrapped tilt/telescopic steering wheel
- ✓ 7-in. Fully Digital Gauge Cluster
- ✓ Smart Key System with Push Button Start
- ✓ Qi-compatible wireless smartphone charging⁴⁰

Audio Multimedia

- ✓ Toyota Audio Multimedia
 - 8-in. touchscreen and six speakers
 - Wireless Apple CarPlay^{®5} & Android Auto^{™6} compatible
 - SiriusXM^{®26} with 3-month Platinum Plan trial subscription²⁷
- ✓ Safety Connect^{®13} with up to 10-year trial; 4G network dependent
- ✓ Service Connect¹⁶ with up to 10-year trial; 4G network dependent

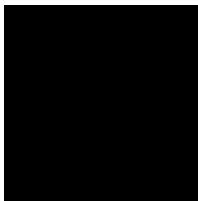
Safety Features

- ✓ Toyota Safety Sense[™] 3.0¹
- ✓ Star Safety System[™]
- ✓ Ten airbags³²
- ✓ Blind Spot Monitor (BSM)³⁸ with Rear Cross-Traffic Alert (RCTA)³⁹

Packages/Options

- ✓ JBL^{®28} Premium Audio includes:
 - Nine JBL^{®28} speakers including subwoofer and amplifier

COROLLA COLORS & TRIMS



Midnight Black Metallic



Blueprint



Underground



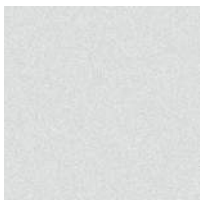
Ruby Flare Pearl³



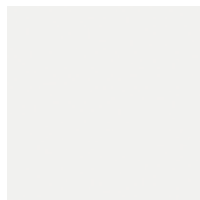
Celestite



Classic Silver Metallic



Wind Chill Pearl³



Ice Cap

Available Midnight Black Metallic roof:³



Blueprint, Underground, Ruby Flare Pearl, Celestite, Classic Silver Metallic, Wind Chill Pearl, Ice Cap

LE and Hybrid LE fabric shown in Light Gray



Hybrid XLE SofTex^{®4} shown in Black



Nightshade and Hybrid Nightshade fabric shown in Black/Red



Black



Macadamia/Mocha

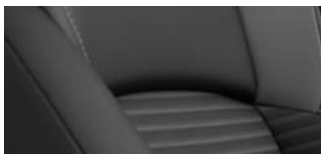


Macadamia/Mocha

SE and Hybrid SE fabric shown in Black/Red



XSE SofTex^{®4} shown in Black



Moonstone



Black/Red

COROLLA WHEELS



16-in. LE, Hybrid LE steel wheels with covers



16-in. LE Package and Hybrid LE Package alloy wheels, Hybrid XLE alloy wheels



18-in. SE, Hybrid SE, and XSE graphite-colored alloy wheels²



18-in. Nightshade and Hybrid Nightshade bronze-finished alloy wheels²

COROLLA ACCESSORIES

This is a great way to add extra personality to your Corolla. Not every accessory is available in your area, so for a complete list of accessories, go to toyota.com/Corolla/accessories.



All-weather floor liners⁴¹



Blackout emblem overlays



Frameless HomeLink^{®42} mirror



Cargo tray⁴³



TRD air filter



Doorsill protectors



Removable cross bars⁴⁴



Apex wheels



Apex rear spoiler

WARRANTIES

Every Toyota Car, Truck and SUV is built to exceptional standards. And that's not idle boasting. We back it up with these Limited Warranty Coverages:

Basic: 36 months/36,000 miles (all components other than normal wear and maintenance items).

Hybrid-Related Component Coverage: Hybrid-related components, including the battery control module, hybrid control module and inverter with converter, are covered for 8 years/100,000 miles. Refer to applicable *Warranty and Maintenance Guide* for details.

Hybrid Battery: HV battery is covered for 10 years or 150,000 miles, whichever comes first. Warranty coverage is subject to terms and conditions. Refer to applicable *Warranty and Maintenance Guide* for details.

Powertrain: 60 months/60,000 miles (engine, transmission/transaxle, drive system, seatbelts and airbags).

Rust-Through: 60 months/unlimited miles (corrosion perforation of sheet metal).

Emissions: Coverages vary under Federal and California regulations. Refer to applicable *Warranty and Maintenance Guide* for details.

Accessories: For Genuine Toyota Accessories purchased at the time of the new vehicle purchase, or dealer installed after purchase, the Toyota Accessory Warranty coverage is in effect for 36 months/36,000 miles from the vehicle's in-service date, which is the same coverage as the Toyota New Vehicle Limited Warranty.

For Genuine Toyota Accessories purchased after the new vehicle purchase the coverage is 12 months, regardless of mileage, from the date the accessory was installed on the vehicle, or the remainder of any applicable new vehicle warranty, whichever provides greater coverage (excludes labor costs for non-dealer installations).

You may be eligible for transportation assistance if it's necessary that your vehicle be kept overnight for repairs covered under warranty. Please see your authorized Toyota dealership for further details.

For complete details about Toyota's warranties, please visit www.toyota.com, refer to the applicable *Warranty and Maintenance Guide* or see your Toyota dealer.

COROLLA FEATURES⁴⁵

S = Standard O = Optional P = Available as part of a package

Exterior

	LE	SE	NIGHTSHADE	XSE	HYBRID LE	HYBRID SE	HYBRID NIGHTSHADE	HYBRID XLE
LED headlights	S							
LED headlights with Daytime Running Lights (DRL)		S	S	S	S	S	S	S
LED Daytime Running Lights (DRL)	S							
LED Daytime Running Lights (DRL) accent lighting		S	S	S		S	S	
LED taillights and stop lights	S	S	S	S	S	S	S	S
Black front grille	S				S			S
Sport mesh gloss-black front grille		S	S	S		S	S	
Color-keyed power outside mirrors	S							
Color-keyed heated power outside mirrors		S			S	S		
Black heated power outside mirrors			S				S	
Color-keyed heated power outside mirrors with blind spot warning indicators ³⁸	P	P		S	P	P		S
Black heated power outside mirrors with blind spot warning indicators ³⁸			P				P	
Color-keyed outside door handles	S	S	S	S	S	S	S	S
Power tilt/slide moonroof with sliding sunshade	P	P		S	P	P		S
Gray metallic sport side rocker panels and color-keyed rear spoiler		S				S		
Black-painted sport side rocker panels and rear spoiler			S				S	
Gray metallic sport side rocker panels and rear spoiler				S				
16-in. steel wheels with covers and P205/55R16 tires	S				S			
16-in. alloy wheels and P205/55R16 tires	P				P			S
18-in. alloy wheels with graphite-colored finish and P225/40R18 tires ²		S		S		S		
18-in. bronze-finished alloy wheels and P225/40R18 tires ²			S				S	
Intermittent windshield wipers	S				S			
Variable intermittent windshield wipers		S	S	S		S	S	S
Single exhaust with dual chrome tips		S	S	S		S	S	
Color-keyed roof-mounted shark-fin antenna	S	S		S	S	S		S
Black roof-mounted shark-fin antenna and window trim		O	S	O			S	
Two-tone exterior color (Midnight Black Metallic roof) ³		O		O				
Blackout badging			S				S	

Interior

Automatic climate control with dust and pollen filter and push-button controls	S	S	S	S	S	S	S	S
Integrated backup camera ⁴⁶ with projected path	S	S	S	S	S	S	S	S
Fabric-trimmed 6-way adjustable driver's seat and 4-way adjustable front passenger seat	S				S			
Sport seats with sport fabric inserts with 6-way adjustable driver's and 4-way adjustable front passenger seat with seatback pocket		S	S			S	S	
SofTex [®] -trimmed ⁴ heated front seats with 8-way power-adjustable driver's seat								S
SofTex [®] -trimmed ⁴ heated front sport seats with sport fabric inserts; 8-way power-adjustable driver's seat and 4-way adjustable front passenger seat and seatback pocket				S				
Driver and front passenger heated seats				S				S
60/40 split fold-down rear seat with center armrest and two cup holders	S	S	S	S	S	S	S	S
Normal, Eco and Sport driving modes		S	S	S		S	S	
Tilt/telescopic 3-spoke steering wheel with audio, Multi-Information Display (MID), Bluetooth ^{®47} hands-free phone, voice-command, Proactive Driving Assist (PDA), ³⁰ Full-Speed Range Dynamic Radar Cruise Control (DRCC), ³¹ and Lane Departure Alert with Steering Assist (LDA w/SA) ³² controls	S				S			
Leather-wrapped tilt/telescopic 3-spoke steering wheel with audio, Multi-Information Display (MID), Bluetooth ^{®47} hands-free phone, voice-command, Proactive Driving Assist (PDA), ³⁰ Full-Speed Range Dynamic Radar Cruise Control (DRCC), ³¹ and Lane Departure Alert with Steering Assist (LDA w/SA) ³² controls	P	S	S		P	S	S	S
Leather-wrapped tilt/telescopic 3-spoke steering wheel with paddle shifters and audio, Multi-Information Display (MID), Bluetooth ^{®47} hands-free phone, voice command, Proactive Driving Assist (PDA), ³⁰ Full-Speed Range Dynamic Radar Cruise Control (DRCC), ³¹ and Lane Departure Alert with Steering Assist (LDA w/SA) ³² controls				S				
Premium instrumentation cluster with speedometer and tachometer, coolant temperature, 4.2-in. color TFT Multi-Information Display (MID) with customizable settings, odometer, tripmeters, outside temperature, current/average fuel economy, cruising range, average speed, elapsed time, shift-position indicator; TPMS ⁴⁸ Eco Mode indicator, one-touch 3-blink lane-change turn signal indicator, and warning messages	S	S	S		S	S	S	
Premium instrumentation cluster with speedometer and tachometer, coolant temperature, 7-in. Fully Digital Gauge Cluster, odometer, tripmeters, outside temperature, current/average fuel economy, cruising range, average speed, elapsed time, shift-position indicator; hybrid system power meter (hybrid models only), TPMS ⁴⁸ Eco Mode indicator, one-touch 3-blink lane-change turn signal indicator, and warning messages								S

COROLLA FEATURES⁴⁵ (CONTINUED)

S = Standard O = Optional P = Available as part of a package

Interior (continued)	LE	SE	NIGHTSHADE	XSE	HYBRID LE	HYBRID SE	HYBRID NIGHTSHADE	HYBRID XLE
Premium instrumentation cluster with speedometer and tachometer, coolant temperature, 7-in. Fully Digital Gauge Cluster, odometer, tripmeters, outside temperature, current/average fuel economy, cruising range, average speed, elapsed time, shift-position indicator; TPMS ⁴⁸ Eco Mode indicator, one-touch 3-blink lane-change turn signal indicator, and warning messages				S				
Metallic interior trim with chrome interior door handles		S	S	S		S	S	
Power door locks with automatic locking feature	S	S	S	S	S	S	S	S
Multi-function in-key remote keyless entry system with lock, unlock, panic and trunk-release functions	S				S			
Smart Key System on front doors and trunk with Push Button Start, remote keyless entry system with lock, two-stage unlock, panic and trunk-release functions	P	S	S	S	P	S	S	S
Front and rear power windows with one-touch auto up/down	S	S	S	S	S	S	S	S
Rear window defogger with timer	S	S	S	S	S	S	S	S
Day/night rearview mirror	S	S	S	S	S	S	S	S
Driver's and front passenger sun visors with illuminated vanity mirrors	P	S	S	S	P	S	S	S
Overhead console with maplights	S	S	S	S	S	S	S	S
Center console with storage compartment	S	S	S	S	S	S	S	S
Qi-compatible wireless smartphone charging ⁴⁰	P	P		S	P	P		S
Passenger-side glove compartment	S	S	S	S	S	S	S	S
Front- and rear-door storage pockets	S	S	S	S	S	S	S	S
One 12V auxiliary power outlet ⁴⁹	S	S	S	S	S	S	S	S
Two front USB-C ports ⁵⁰	S	S	S	S	S	S	S	S
Two rear USB-C ports ⁵⁰	S	S	S	S	S	S	S	S
Two front cup holders	S	S	S	S	S	S	S	S
Two rear cup holders	S	S	S	S	S	S	S	S
Digital clock	S	S	S	S	S	S	S	S

Audio Multimedia

8-in. Toyota Audio Multimedia touchscreen with six speakers, wireless Apple CarPlay ⁶⁵ & Android Auto ^{TM6} compatible, SiriusXM ⁶⁶ with 3-month Platinum Plan trial subscription. ²⁷ See toyota.com/audio-multimedia for details.	S	S	S	S	S	S	S	S
JBL ⁶⁸ Premium Audio — includes nine JBL ⁶⁸ speakers, subwoofer and amplifier			P	O			P	O


Connected Services⁸

Drive Connect ²⁰ — includes Cloud Navigation ²¹ with Google Points of Interest (POI) data, Intelligent Assistant ²³ with Hey, Toyota, and Destination Assist. ²² 4G network dependent. Subscription required. ²⁰	S	S	S		S	S	S	
Drive Connect ²⁰ with 1-year trial — includes Cloud Navigation ²¹ with Google Points of Interest (POI) data, Intelligent Assistant ²³ with Hey, Toyota, and Destination Assist. ²² 4G network dependent.				S				S
Safety Connect ⁶¹³ with up to 10-year trial — includes Emergency Assistance, Stolen Vehicle Locator, ¹⁵ Roadside Assistance ¹⁴ and Automatic Collision Notification. 4G network dependent.	S	S	S	S	S	S	S	S
Service Connect ¹⁶ with up to 10-year trial — receive personalized maintenance updates and vehicle health reports. 4G network dependent.	S	S	S	S	S	S	S	S
Remote Connect ²⁴ — remotely interact with your vehicle through the Toyota app ⁹ via your smartwatch, allowing you to locate your last parked location, check vehicle status and monitor guest drivers. 4G network dependent.	S				S			
Remote Connect ²⁴ with 1-year trial — remotely interact with your vehicle through the Toyota app ⁹ via your smartwatch allowing you to locate your last parked location, check vehicle status and monitor guest drivers. 4G network dependent.		S	S			S	S	
Remote Connect ²⁴ with 1-year trial — remotely interact with your vehicle through the Toyota app ⁹ via your smartwatch allowing you to lock/unlock doors, start and stop the vehicle, use Remote Climate features, use Remote Charging features, locate your last parked location, check vehicle status and monitor guest drivers. 4G network dependent.				S				S
Wi-Fi Connect ¹⁷ — with 30-day or up to 3 GB trial. With AT&T Wi-Fi hotspot and Integrated Streaming (Apple Music ⁶¹⁸ and Amazon Music ¹⁹) compatibility. 4G network dependent.	S	S	S	S	S	S	S	S

COROLLA FEATURES⁴⁵ (CONTINUED)

S = Standard O = Optional P = Available as part of a package

Safety and Convenience

	LE	SE	NIGHTSHADE	XSE	HYBRID LE	HYBRID SE	HYBRID NIGHTSHADE	HYBRID XLE
Toyota Safety Sense™ 3.0 (TSS 3.0) ¹ — Pre-Collision System with Pedestrian Detection (PCS w/PD); ²⁹ Proactive Driving Assist (PDA); ³⁰ Full-Speed Range Dynamic Radar Cruise Control (DRCC); ³¹ Lane Departure Alert with Steering Assist (LDA w/SA); ³² Automatic High Beams (AHB); ³³ Road Sign Assist (RSA); ³⁵ and Lane Tracing Assist (LTA) ³⁴	S	S	S	S	S	S	S	S
 Star Safety System™ — includes Vehicle Dynamics Integrated Management (VDIM); ⁵² Vehicle Stability Control (VSC); ⁵³ Traction Control (TRAC), Anti-lock Brake System (ABS), Electronic Brake-force Distribution (EBD), Brake Assist (BA) ⁵⁴ and Smart Stop Technology® (SST) ⁵⁵	S	S	S	S	S	S	S	S
Electric Parking Brake (EPB) ⁵⁶	S	S	S	S	S	S	S	S
Ten airbags ⁵⁷ — includes driver and front passenger Advanced Airbag System, driver and front passenger seat-mounted side airbags, driver knee airbag, front passenger seat-cushion airbag, rear seat-mounted side airbags and front and rear side curtain airbags	S	S	S	S	S	S	S	S
Driver and front passenger Whiplash-Injury-Lessening (WIL) ⁵⁷ seats	S	S	S	S	S	S	S	S
3-point seatbelts for all seating positions; driver-side Emergency Locking Retractor (ELR) and Automatic/Emergency Locking Retractor (ALR/ELR) on all passenger belts	S	S	S	S	S	S	S	S
Adjustable front shoulder anchors, driver and front passenger seatbelt pretensioners with force limiters	S	S	S	S	S	S	S	S
LATCH (Lower Anchors and Tethers for Children) includes lower anchors on outboard rear seats and tether anchors on all rear seats	S	S	S	S	S	S	S	S
Child-protector rear door locks	S	S	S	S	S	S	S	S
Energy-absorbing collapsible steering column	S	S	S	S	S	S	S	S
Front and rear energy-absorbing crumple zones with side-impact door beams	S	S	S	S	S	S	S	S
Head-impact protection structure	S	S	S	S	S	S	S	S
High-tensile-strength steel body panels	S	S	S	S	S	S	S	S
Tire Pressure Monitor System (TPMS) ⁴⁸	S	S	S	S	S	S	S	S
Engine immobilizer ⁵⁸	S	S	S	S	S	S	S	S
Hill Start Assist Control (HAC) ⁵⁹	S	S	S	S	S	S	S	S
Blind Spot Monitor (BSM) ³⁸ with Rear Cross-Traffic Alert (RCTA) ³⁹	P	P	P	S	P	P	P	S

COROLLA SPECIFICATIONS

S = Standard O = Optional P = Available as part of a package

Mechanical/Performance

	LE	SE	NIGHTSHADE	XSE	HYBRID LE	HYBRID SE	HYBRID NIGHTSHADE	HYBRID XLE
TRANSMISSION								
Dynamic-Shift Continuously Variable Transmission (CVT)	S	S	S	S				
Electronically controlled Continuously Variable Transmission (ECVT)					S	S	S	S
DRIVETRAIN								
Front-Wheel Drive (FWD)	S	S	S	S	S	S	S	S
Electronic On-Demand All-Wheel Drive (AWD)					O	O	O	
BODY CONSTRUCTION								
Unitized body	S	S	S	S	S	S	S	S
SUSPENSION								
Independent MacPherson strut front suspension with stabilizer bar; torsion beam rear suspension	S							
Independent MacPherson strut front suspension with stabilizer bar; multi-link rear suspension		S	S	S	S	S	S	S
STEERING								
Electric Power Steering (EPS); power-assisted rack-and-pinion	S	S	S	S	S	S	S	S
Turning circle diameter, curb to curb (ft.)	35.6	35.6	35.6	35.6	35.6	35.6	35.6	35.6
BRAKES								
Power-assisted ventilated 10.8-in. front disc brakes; solid 10.2-in. rear disc brakes with Electronically Controlled Braking (ECB) system, and Star Safety System™	S	S	S	S	S	S	S	S

Dimensions

EXTERIOR (IN.)								
Overall height	56.5	56.5	56.5	56.5	56.5	56.5	56.5	56.5
Overall width	70.1	70.1	70.1	70.1	70.1	70.1	70.1	70.1
Overall length	182.3	182.5	182.5	182.5	182.3	182.5	182.5	182.3
Wheelbase	106.3	106.3	106.3	106.3	106.3	106.3	106.3	106.3
Tread (front/rear)	60.3/61.0	60.3/61.0	60.3/61.0	60.3/61.0	60.3/61.0	60.3/61.0	60.3/61.0	60.3/61.0
Ground clearance	5.3	5.3	5.3	5.3	5.3	5.3	5.3	5.3
INTERIOR (FRONT/REAR) (IN.)								
Head room without moonroof	38.3/37.1	38.3/37.1	38.3/37.1		38.3/37.1	38.3/37.1	38.3/37.1	
Head room with moonroof	38.0/37.1	38.0/37.1	38.0/37.1	38.0/37.1	38.0/37.1	38.0/37.1	38.0/37.1	38.0/37.1
Shoulder room	54.0/51.7	54.0/51.7	54.0/51.7	54.0/51.7	54.0/51.7	54.0/51.7	54.0/51.7	54.0/51.7
Hip room	53.9/51.3	53.9/51.3	53.9/51.3	53.9/51.3	53.9/51.3	53.9/51.3	53.9/51.3	53.9/51.3
Leg room	42.0/34.8	42.0/34.8	42.0/34.8	42.0/34.8	42.0/34.8	42.0/34.8	42.0/34.8	42.0/34.8
Seating capacity	5	5	5	5	5	5	5	5

Weights and Capacities

Curb weight (FWD)	2955	3110	3110	3150	2850	3080	3140	3130
EPA passenger volume with moonroof (cu. ft.)	88.6	88.6	88.6	88.6	88.6	88.6	88.6	88.6
Cargo volume (cu. ft.) ⁴³	13.1	13.1	13.1	13.1	13.1	13.1	13.1	13.1
Fuel tank (gal.)	13.2	13.2	13.2	13.2	11.3	11.3	11.3	11.3
Coefficient of Drag (Cd)	0.31	0.31	0.31	0.31	0.31	0.31	0.31	0.31

Tires

All-season	S	S	S	S	S	S	S	S
Temporary spare tire	S	S	S	S				

Mileage Estimates (mpg city/highway/combined)³⁶

Front-Wheel Drive (FWD)	32/41/35	31/40/34	31/40/34	31/40/34	53/46/50	50/43/47	50/43/47	53/46/50
All-Wheel Drive (AWD)					51/44/48	47/41/44	47/41/44	

DISCLOSURES

1. Toyota Safety Sense™ effectiveness is dependent on many factors including road, weather and vehicle conditions. Drivers are responsible for their own safe driving. Always pay attention to your surroundings and drive safely. See *Owner's Manual* for limitations. 2. Performance tires are expected to experience greater tire wear than conventional tires. Tire life may be less than 24,000 miles, depending upon driving conditions. 3. Extra-cost color. 4. SofTex® is a registered trademark of Toyota Motor Sales, U.S.A., Inc. 5. Apps and services are subject to change at any time without notice. Data charges may apply. Apple CarPlay® functionality requires a compatible iPhone® connected wirelessly to the vehicle. Apple CarPlay® is a registered trademark of Apple Inc. 6. To wirelessly use Android Auto on your car display, you need a compatible Android smartphone with an active data plan. You can check which smartphones are compatible at g.co/androidauto/requirements. Operability depends on network availability, a cellular connection and GPS signal. Services subject to change at any time without notice. Data charges may apply. To learn more, go to <https://www.toyota.com/audio-multimedia/>. To learn more about Toyota's Connected Services data collection, use, sharing and retention practices, please visit <https://www.toyota.com/support/privacy-notice/>. 7. Projected EPA-estimated 53 city/46 hwy/50 combined mpg rating for 2024 Corolla Hybrid LE and Hybrid XLE; 51 city/44 hwy/48 combined mpg rating for 2024 Corolla Hybrid LE AWD; 50 city/43 hwy/47 combined mpg rating for 2024 Corolla Hybrid SE and Hybrid Nightshade; 47 city/41 hwy/44 combined mpg rating for 2024 Corolla Hybrid SE AWD and Hybrid Nightshade AWD as determined by manufacturer. EPA estimates not available at time of publishing. Use for comparison purposes only. Your mileage will vary for many reasons, including your vehicle's condition and how/where you drive. See www.fueleconomy.gov. 8. Toyota Connected Services depend on certain factors outside of Toyota's control in order to operate, including cellular network availability and GPS signal. Without either of these things, operability may be limited or precluded, including access to response center and emergency support. Services vary by vehicle and are subject to change at any time without notice. Requires app download/registration and subscription after trial (if applicable). Terms of Use apply. Data charges may apply. See *Owner's Manual* and <https://www.toyota.com/connected-services/>. For Toyota's Connected Services' data collection, use, sharing and retention practices, please visit <https://www.toyota.com/support/privacy-notice/>. 9. An active Remote Connect trial or subscription is required to use the features mentioned in the Toyota app. 10. Apple and the Apple logo are trademarks of Apple Inc., registered in the U.S. and other countries. 11. Google, Android, Android Auto, YouTube Music and other marks are trademarks of Google LLC. 12. Remote Start feature is not applicable to vehicles equipped with manual transmission. 13. Safety Connect® depends on factors outside of Toyota's control in order to operate, including cellular network availability and GPS signal. Without either of these things, operability may be limited or precluded, including access to response center and emergency support. Stolen vehicle police report required to use Stolen Vehicle Locator. If subscription includes Automatic Collision Notification, it will activate only in limited circumstances. Services vary by vehicle and are subject to change at any time without notice. Terms of Use apply. Data charges may apply. See *Owner's Manual* and <https://www.toyota.com/connected-services/>. For Toyota's Connected Services' data collection, use, sharing and retention practices, please visit <https://www.toyota.com/support/privacy-notice/>. Trial period begins on original purchase or lease date of new vehicle. Paid subscription required after trial (if applicable). Terms of Use apply. 14. Requires cellular network availability, a cellular connection and GPS signal. May not work in all areas. Service may vary by vehicle and region. See Toyota dealer for details and exclusions. 15. Building and/or parking structures may limit system effectiveness. Stolen vehicle police report required to use Stolen Vehicle Locator. For additional assistance contact the Toyota Brand Engagement Center at 1-800-331-4331. 16. Service Connect depends on certain factors outside of Toyota's control in order to operate, including cellular network availability and GPS signal. Without either of these things, operability may be limited or precluded. Information provided is based on the last time data was collected from vehicle and is not real-time data. Services vary by vehicle and are subject to change at any time without notice. Terms of Use apply. Data charges may apply. See usage precautions and service limitations in *Owner's Manual* and <https://www.toyota.com/connected-services/>. To learn about Toyota's Connected Services' data collection, use, sharing and retention practices, please visit <https://www.toyota.com/support/privacy-notice/>. The Service Connect trial is included for up to 10 years. 4G network dependent. 17. Service not available everywhere or in every vehicle. Depends on cellular network availability and GPS signal. Without either of these things, operability may be limited or precluded. Up to 5 devices can be supported using in-vehicle connectivity. Services subject to change at any time without notice. The Wi-Fi Connect trial begins at the time of enrollment and expires the earlier of 3GB data use or the 1-month trial period ends. Paid subscription required after trial. Select models include Integrated Streaming capability, which requires a separate subscription to third-party provider services. Data charges may apply. Valid in the contiguous U.S. and Alaska. Go to <https://myvehicle.att.com/#/toyota/learn?language=en&country=US> for terms and conditions. Terms of Use apply. 18. Apple Music and the Apple logo are trademarks of Apple Inc., registered in the U.S. and other countries. Requires Wi-Fi Connect subscription after trial (if applicable) and your own Apple Music account. 19. Amazon, Amazon Music, and related marks are trademarks of Amazon.com, Inc., or its affiliates. 20. Drive Connect availability and accuracy depend on certain factors outside of Toyota's control in order to operate, including 4G network availability, a cellular connection and GPS signal. Without any one or more of these things, operability may be limited or precluded. Services subject to change at any time without notice. Requires app download/registration and subscription after trial (if applicable). Terms of Use apply. Data charges may apply. See *Owner's Manual* and <https://www.toyota.com/connected-services/> for limitations. To learn about Toyota's Connected Services data collection, use, sharing and retention practices, visit <https://www.toyota.com/support/privacy-notice/>. Trial period begins on original purchase or lease date of new vehicle. Paid subscription required after trial (if applicable). Terms of Use apply. 21. Cloud Navigation requires a trial or subscription to Drive Connect. Drive Connect availability and accuracy depend on certain factors outside of Toyota's control in order to operate, including 4G network availability, a cellular connection and GPS signal. Without any one or more of these things, operability may be limited or precluded. Services subject to change at any time without notice. Requires app download/registration and subscription after trial (if applicable). Terms of Use apply. Data charges may apply. See *Owner's Manual* and <https://www.toyota.com/connected-services/> for limitations. To learn about Toyota's Connected Services data collection, use, sharing and retention practices, visit <https://www.toyota.com/support/privacy-notice/>. 22. Destination Assist requires a trial or subscription to Drive Connect. Drive Connect availability and accuracy depend on certain factors outside of Toyota's control in order to operate, including 4G network availability, a cellular connection and GPS signal. Without any one or more of these things, operability may be limited or precluded. Services subject to change at any time without notice. Requires app download/registration and subscription after trial (if applicable). Terms of Use apply. Data charges may apply. See *Owner's Manual* and <https://www.toyota.com/connected-services/> for limitations. To learn about Toyota's Connected Services data collection, use, sharing and retention practices, visit <https://www.toyota.com/support/privacy-notice/>. The Destination Assist trial period begins on original purchase or lease date of new vehicle. Paid subscription required after trial (if applicable). Terms of Use apply. 23. Intelligent Assistant requires a trial or subscription to Drive Connect. Drive Connect availability and accuracy depend on certain factors outside of Toyota's control in order to operate, including 4G network availability, a cellular connection and GPS signal. Without any one or more of these things, operability may be limited or precluded. Services subject to change at any time without notice. Requires app download/registration and subscription after trial (if applicable). Terms of Use apply. Data charges may apply. See *Owner's Manual* and <https://www.toyota.com/connected-services/> for limitations. To learn about Toyota's Connected Services data collection, use, sharing and retention practices, visit <https://www.toyota.com/support/privacy-notice/>. 24. Use only if aware of circumstances surrounding vehicle it is legal safe to do so (e.g., do not remotely start a gas engine vehicle in an enclosed space or if vehicle is occupied by a child). Remote Connect depends on certain factors outside of Toyota's control in order to operate, including cellular network availability and GPS signal. Without either of these things, operability may be limited or precluded. Services subject to change at any time without notice. Bluetooth® connectivity is required if your subscription includes Digital Key capability. Remote start/stop only available on select models. See your Toyota dealer for details. Terms of Use apply. Data charges may apply. See *Owner's Manual* and <https://www.toyota.com/connected-services/>. To learn about Toyota's Connected Services' data collection, use, sharing and retention practices, please visit <https://www.toyota.com/support/privacy-notice/>. Trial period begins on original purchase or lease date of new vehicle. Paid subscription required after trial (if applicable). Terms of Use apply. 25. iPhone® is a registered trademark of Apple Inc. All rights reserved. 26. Trial length and service availability may vary by model, model year or trim. Service will automatically stop at the end of your trial subscription period unless you decide to continue service. If you do not wish to enjoy your trial, you can cancel by calling the number below. All SiriusXM services require a subscription, each sold separately by SiriusXM after the trial period. **Service subject to the SiriusXM Customer Agreement and Privacy Policy; visit www.siriusxm.com to see complete terms and how to cancel which includes calling 1-866-635-2349.** Some services and features are subject to device capabilities and location availability. All fees, content and features are subject to change. SiriusXM, Pandora and all related logos are trademarks of Sirius XM Radio Inc. and its respective subsidiaries. 27. SiriusXM® services require a subscription after trial period. See SiriusXM Customer Agreement for complete terms at www.siriusxm.com. 28. JBL® is a registered trademark of Harman International Industries, Inc. 29. The Pre-Collision System (PCS) with Pedestrian Detection (PD) is designed to determine if impact is imminent and help reduce impact speed and damage in certain frontal collisions involving a vehicle, a pedestrian, a bicycle, or a motorcyclist. PCS w/PD is not a substitute for safe and attentive driving. System effectiveness depends on many factors, such as speed, size and position of pedestrian or bicyclist and weather, light and road conditions. See *Owner's Manual* for limitations. 30. Proactive Driving Assist (PDA) is designed to detect certain objects or curves in the road and provide gentle braking and/or steering support. PDA is not a substitute for safe and attentive driving. System effectiveness depends on many factors, such as speed, size and position of detected objects and weather, light and road conditions. See *Owner's Manual* for additional limitations and details. 31. Full-Speed Range Dynamic Radar Cruise Control is not a substitute for safe and attentive driving. See *Owner's Manual* for instructions and limitations. 32. Lane Departure Alert with Steering Assist is designed to read visible lane markers under certain conditions. It provides a visual/audible alert and slight steering force when lane departure is detected. It is not a collision-avoidance system or a substitute for safe and attentive driving. Effectiveness depends on many factors including road, weather and vehicle conditions. See *Owner's Manual* for limitations. 33. Automatic High Beams operate at speeds above 21 mph. See *Owner's Manual* for instruction and limitations. 34. The Lane Tracing Assist (LTA) lane centering function is designed to read visible lane markers and detect other vehicles under certain conditions. It is only operational when DRCC is engaged. See *Owner's Manual* for limitations. 35. Road Sign Assist only recognizes certain road signs. See *Owner's Manual* for limitations. 36. Projected EPA-estimated 32 city/41 hwy/35 combined mpg rating for 2024 Corolla LE; 31 city/40 hwy/34 combined mpg rating for 2024 Corolla SE, Nightshade and XSE; 53 city/46 hwy/50 combined mpg rating for 2024 Corolla Hybrid LE and Hybrid XLE; 51 city/44 hwy/48 combined mpg rating for 2024 Corolla Hybrid LE AWD; 50 city/43 hwy/47 combined mpg rating for 2024 Corolla Hybrid SE and Hybrid Nightshade; 47 city/41 hwy/44 combined mpg rating for 2024 Corolla Hybrid SE AWD and Hybrid Nightshade AWD as determined by manufacturer. EPA estimates not available at time of publishing. Use for comparison purposes only. Your mileage will vary for many reasons, including your vehicle's condition and how/where you drive. See www.fueleconomy.gov. 37. Airbag systems supplement the seatbelts and are designed to inflate only under certain conditions and in certain types of severe collisions. Always wear seatbelt, sit upright in middle and as far back in seat as possible to help decrease risk of injury. Do not put objects in front of an airbag. See *Owner's Manual* for limitations. 38. Do not rely exclusively on Blind Spot Monitor. Look over shoulder and use turn signal. See *Owner's Manual* for limitations. 39. Do not rely exclusively on the Rear Cross-Traffic Alert. Visually confirm clearance during use. See *Owner's Manual* for limitations. 40. Wireless charging may not be compatible with all mobile phones, smart devices, tablets, e-readers, MP3/WMA players and like products. 41. This floor mat/floor liner was designed specifically for use in your model and model year vehicle and SHOULD NOT be used in any other vehicle. To avoid potential interference with pedal operation, each mat/liner must be secured with its fasteners. Do not install a floor mat/floor liner on top of an existing floor mat/floor liner. 42. HomeLink® and the HomeLink® house icon are registered trademarks of

DISCLOSURES

Gentex Corporation. **43.** Cargo and load capacity limited by weight and distribution. Always properly secure cargo and cargo area. **44.** Do not overload your vehicle. See *Owner's Manual* for weight limits and restrictions. **45.** Toyota strives to build vehicles to match customer interest and thus they typically are built with popular options and option packages. Not all options/packages are available separately and some may not be available in all regions of the country. See toyota.com for information about options/packages commonly available in your area. If you would prefer a vehicle without any or with different options, contact your dealer to check for current availability or the possibility of placing a special order. Color(s) depicted may vary based on multiple factors, including ambient lighting and the format in which it is being viewed (e.g., computer, mobile device or print). **46.** The backup camera does not provide a comprehensive view. Always look over shoulder and use outside mirrors. See *Owner's Manual* for limitations. **47.** A compatible Bluetooth®-enabled phone must first be paired. Phone performance depends on software, coverage and carrier. The Bluetooth® word mark and logos are registered trademarks of Bluetooth SIG, Inc. Use of such marks by Toyota is under license. **48.** The Tire Pressure Monitor System alerts the driver when tire pressure is critically low. For optimal tire wear and performance, tire pressure should be checked regularly with a gauge; do not rely solely on the monitor system. See *Owner's Manual* for limitations and details. **49.** Rated for 12 volts/10 amps. See *Owner's Manual* for additional limitations and details. **50.** May not be compatible with all mobile phones, smart devices, tablets, e-readers, MP3/WMA players and like models. **52.** Vehicle Dynamics Integrated Management (VDIM) is an electronic system designed to help the driver maintain vehicle control under adverse conditions. It is not a substitute for safe and attentive driving practices. Factors including speed, road conditions, weather and driver steering input can all affect whether VDIM will be effective in preventing a loss of control. See *Owner's Manual* for additional limitations and details. **53.** Vehicle Stability Control is not a substitute for safe and attentive driving practices. Factors including speed, road conditions, weather and steering input can affect whether VSC will be effective. See *Owner's Manual* for limitations. **54.** Brake Assist is designed to help the driver take advantage of ABS and is not a substitute for safe driving practices. Braking effectiveness also depends on proper vehicle maintenance, tire and road conditions. See *Owner's Manual* for additional limitations and details. **55.** Smart Stop Technology® will reduce power to help the brakes bring vehicle to a stop during certain contemporaneous brake and accelerator pedal applications. See *Owner's Manual* for limitations. **56.** When the system is on, Electric Parking Brake is designed to engage the Parking Brake under limited conditions. It may not hold the vehicle under all conditions. See *Owner's Manual* for additional limitations and details. **57.** Whiplash-Injury-Lessening front seats can help reduce the severity of whiplash injury in certain rear-end collisions. **58.** The engine immobilizer is a state-of-the-art anti-theft system initiated when the key is inserted into ignition switch or a Smart Key fob is in/near the vehicle. Engine will only start if the code in the transponder chip inside the key/fob matches the code in vehicle's immobilizer. The transponder chip is embedded in the key/fob and can be costly to replace. For lost key or fob, see a Toyota dealer or go to www.aloa.org to find a qualified locksmith for high-security key service. **59.** Hill Start Assist Control is designed to minimize backward rolling on steep ascents. Not a substitute for safe driving judgment and practices. Speed, grade, surface conditions, driver input, etc., can all affect HAC function. See *Owner's Manual*.

Toyota strives to build vehicles to match customer interest and thus they typically are built with popular options and option packages. Not all options/packages are available separately and some may not be available in all regions of the country. See toyota.com for information about options/packages commonly available in your area. If you would prefer a vehicle without any or with different options, contact your dealer to check for current availability or the possibility of placing a special order.

Color(s) depicted may vary based on multiple factors, including ambient lighting and the format in which it is being viewed (e.g., computer, mobile device or print).

Some vehicles are shown with available equipment. Seatbelts should be worn at all times. For details on vehicle specifications, standard features and available equipment in your area, contact your Toyota dealer. A vehicle with particular equipment may not be available at the dealership. Ask your Toyota dealer to help locate a specifically equipped vehicle.

All information presented herein is based on data available at the time of posting, is subject to change without notice and pertains specifically to mainland U.S.A. vehicles only. Vehicles shown may be prototypes, shown using visual effects and/or shown with options. Actual models may vary.



Mobility

For Toyota Mobility program details, go to www.toyota.com/mobility or call the Toyota Brand Engagement Center at 1-800-331-4331