

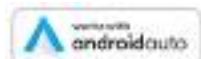
**TOYOTA**

2024 Highlander

2024 HIGHLANDER

# Elevate every journey.

Go above and beyond the ordinary in the 2024 Toyota Highlander. With a choice between two advanced powertrains — a 2.4L 4-cylinder turbocharged engine or 2.5L 4-cylinder hybrid engine — and available all-wheel-drive capability, it's time to take your drives to the next level. To make it easier, a spacious and teched-out interior will provide comfort for up to eight on every drive.





XSE AWD shown in Wind Chill Pearl (extra-cost color).



## PERFORMANCE

# Driven to do it all.

Find your confidence behind the wheel, whether you're hustling around town or venturing out to see nature's offerings. Thanks to an available hybrid powertrain with up to a manufacturer-estimated 36 combined mpg rating,<sup>1</sup> you can explore much farther.

### 2.4L turbo powertrain

Highlander's 2.4L turbo 4-cylinder engine provides 265 horsepower with 310 lb.-ft. of torque. With that power, and up to a manufacturer-estimated 25 combined mpg rating,<sup>1</sup> Highlander is ready to take on your adventures.

### XSE sport-tuned suspension

Unique to Highlander XSE is a sport-tuned suspension. When compared to other Highlander models, its retuned shock absorbers, higher-rate springs and rear stabilizer bar help it hug the road a little tighter, while its lower, athletic stance shows everyone that it's ready to hit the ground running.

### Dynamic Torque Vectoring AWD

Enjoy an upgrade in all-wheel-drive performance. Available Dynamic Torque Vectoring All-Wheel Drive (TV-AWD) improves responsiveness and stability by sending up to 50 percent of the power to the rear and then further distributing more power to the wheel that needs it.

### Towing capacity

The epitome of power and smoothness. Highlander flexes some muscle with its up-to-5000-lb. towing capacity.<sup>2</sup>

### Multi-Terrain Select

Offering you more capability when the pavement ends, Highlander features Multi-Terrain Select (MTS) on All-Wheel Drive (AWD) models. Choose between four modes (Mud & Sand, Rock & Dirt, Snow, and Normal) for enhanced traction. When activated, the system is designed to sense slippage and regulate wheelspin — helping to maximize driving performance on different surfaces.

### Drive modes

Distinct drive modes let you tailor Highlander's driving dynamics to match your mood. Whether you're driving a gas or hybrid powertrain, you can choose how it performs. From maximizing efficiency to indulging your spirited side, there's a mode made to enhance your drives.





Hybrid Platinum shown in Ruby Flare Pearl (extra-cost color).

## EXTERIOR

# Captivating from every angle.

Highlander's bold design is hard to ignore. Its sculpted shape and contoured lines display the perfect balance of power and refinement. Available in an array of stunning colors, it sets a standard for curb appeal. Get ready to turn heads wherever you go.

### Twin-tip exhaust

Underneath XSE's unique rear bumper features Highlander's available twin-tip exhaust. Chrome-plated for durability and added attention, it helps finish off the sportier rear design.

### 20-in. wheels

Highlander shows off more style with its available 20-in. alloy wheels. Standard on XSE, Limited and Platinum, these sleek wheels add more sophistication without compromising performance.

### Hands-free power liftgate

Enjoy ease and comfort, even with your hands full. When you need to engage its available hands-free power liftgate,<sup>3</sup> Highlander senses your Smart Key fob and is designed to open automatically when you kick your foot under the rear bumper.

### LED headlights

The dynamic front end of Highlander shows off its modern look. The stylish standard LED headlights provide a crisp, clean light, while available auto-leveling LED projector-beam headlights help keep light aimed down at the road, for better visibility.



INTERIOR

# Always ride in comfort.

Highlander combines space and comfort while featuring a modern design. Seat up to eight with third-row seating, catch a breeze under the available panoramic moonroof, or stay cozy with its available heated and ventilated front seats.



### 12.3-in. Multi-Information Display

Standard on Limited and Platinum, the available 12.3-in. fully digital gauge cluster presents turn-by-turn directions, safety info, alerts and more, all at a glance, so you can keep your eyes on the road.



### Qi wireless charging

Highlander has available Qi-compatible wireless smartphone charging.<sup>4</sup> Leave the cables at home and seamlessly charge on the go by placing your smartphone on the shelf right below the touchscreen.



### Two-tone XSE interior

Feel the sporty vibe of XSE every time you enter. With its available red and black leather-trimmed seats with red accent stitching across the instrument panel, you can't help but feel a little more empowered behind the wheel.



### Panoramic moonroof

Follow the stars above with Highlander's available panoramic moonroof with a front power tilt/slide moonroof. Open it up to stargaze and enjoy the wide-open view, or easily find cover with a power-retractable sunshade.



### Third-row seating

Highlander's roomy interior, along with available second-row bench seating, gives you enough space to seat up to eight — perfect for larger groups and families.

See numbered footnotes in Disclosures section.



Hybrid XLE Nightshade shown in Cement.

## NIGHTSHADE

# Looks that sharpen your style.

Make a bold entrance wherever you go with the Highlander Hybrid Nightshade. From the daring exterior to its uniquely trimmed seats featuring black fabric and stitching, the Nightshade is decorated with sleek and captivating details inside and out.



Hybrid XLE Nightshade interior shown in Black mixed-media trim.

### Black exterior accents

It's all in the details. Highlander Hybrid Nightshade's black badging, rear spoiler, side mirror caps and door handles give your ride an extra-sleek edge.

### Nightshade wheels

Alluring from the ground up. Pull up with 18-in. black alloy wheels that complement your bold style.

# Technology that keeps up with you.

Take advantage of smarter and convenient technologies designed to simplify your everyday life. Trial periods available on select models for the listed Connected Services.\*<sup>5</sup> 4G network dependent.



## Safety Connect®

Round-the-clock help when the unexpected happens.<sup>6</sup>

- ✓ Emergency Assistance Button (SOS)
- ✓ Enhanced Roadside Assistance<sup>7</sup>
- ✓ Automatic Collision Notification
- ✓ Stolen Vehicle Locator<sup>8</sup>



## Service Connect

Being proactive to help keep your vehicle in peak condition.<sup>9</sup>

- ✓ Vehicle Health Report
- ✓ Vehicle Maintenance Alert
- ✓ Maintenance Reminder



## Wi-Fi Connect

Turn your Toyota into a hotspot with 4G connectivity.<sup>10</sup>

- ✓ AT&T Hotspot
- ✓ Integrated Streaming for Apple Music® Subscription<sup>11</sup>
- ✓ Integrated Streaming for Amazon Music Subscription<sup>12</sup>



## Drive Connect

Enhanced features to get you where you need to be.<sup>13</sup>

- ✓ Destination Assist<sup>14</sup>
- ✓ Intelligent Assistant<sup>15</sup>
- ✓ Cloud Navigation<sup>16</sup>



## Remote Connect

Manage your vehicle, including remote start and much more.<sup>17</sup>

- ✓ Remote Vehicle Start (if equipped)
- ✓ Unlock/Lock
- ✓ Remote Notifications
- ✓ Guest Driver
- ✓ Smartwatch Compatibility

\*To view included trial details, please visit [toyota.com/connected-services](https://toyota.com/connected-services).



# Amplify your drive.

Enhance every drive with an experience that's all about you. Whether enjoying the sounds of your favorite soundtrack or interacting with an interface that you're familiar with, you'll always be surrounded by comfort.



## JBL® Premium Audio system

Immerse yourself in quality sound with Highlander's available JBL®<sup>18</sup> Premium Audio system. An 11-speaker audio system equipped with a subwoofer, it provides phenomenal sound that amplifies every drive.



## Wireless Apple CarPlay®

Bring along a familiar face. With Highlander's wireless Apple CarPlay®<sup>21</sup> compatibility, you can use your compatible iPhone®<sup>22</sup> with the multimedia system to get directions, make calls, send and receive messages, and listen to music, all while staying focused behind the wheel.



## Wireless Android Auto™

Stay connected on the road. By pairing your compatible Android™<sup>19</sup> phone with the audio multimedia system, Android Auto™<sup>20</sup> lets you get real-time traffic alerts, make and receive phone calls, listen to your favorite soundtrack and more.



## SiriusXM® Platinum Plan 3-month trial

With a SiriusXM® Platinum Plan 3-month trial,<sup>23</sup> you get 425+ channels, including 165+ channels in your vehicle, to listen to ad-free music, plus sports, news, talk, comedy and more. Innovative features in Highlander make it even easier to search, discover and listen than ever before, through personalized channel recommendations curated just "For You." Plus, the Live Sports category puts all your games and teams in one place, for easy access.





TOYOTA SAFETY SENSE™

# Peace of mind comes standard.

Toyota Safety Sense™ (TSS)<sup>24</sup> is a suite of safety and driver-assistance technologies designed to support driver awareness, decision-making and vehicle operation. These features are available on many new Toyota vehicles at no additional cost.



Pre-Collision System with Pedestrian Detection<sup>25</sup>



Full-Speed Range Dynamic Radar Cruise Control<sup>26</sup>



Lane Departure Alert with Steering Assist<sup>27</sup>



Automatic High Beams<sup>28</sup>



Lane Tracing Assist<sup>29</sup>



Road Sign Assist<sup>30</sup>

## HIGHLANDER MODELS



LE



XLE

Adds these top features to those offered on LE



XSE

Adds these top features to those offered on XLE

### Mechanical/Performance

- ✓ 2.4-liter turbocharged 4-cylinder with 265 hp and 310 lb.-ft. of torque
- ✓ Direct Shift-8AT (8-speed Electronically Controlled automatic Transmission)
- ✓ Available All-Wheel Drive (AWD)
- ✓ Snow Mode + Drive Mode Select (Eco, Normal, Sport)
- ✓ Available Multi-Terrain Select (MTS) (Mud & Sand, Rock & Dirt, Normal)
- ✓ Up to 22 city/29 highway/25 combined est. mpg rating<sup>1</sup>

### Exterior Features

- ✓ Color-keyed heated power outside mirrors with turn signal and blind spot warning<sup>31</sup> indicators and manual folding feature
- ✓ LED fog lights
- ✓ LED projector headlights with Daytime Running Lights (DRL)
- ✓ LED taillights
- ✓ Front grille in material black with silver-painted surround
- ✓ 18-in. painted alloy wheels
- ✓ Height-adjustable power liftgate with jam protection

### Interior Features

- ✓ Leather-trimmed shift knob and steering wheel
- ✓ Seating for eight with second-row bench seat and 60/40 split/fold seats
- ✓ Three-zone automatic climate control
- ✓ Fabric-trimmed seats
  - 8-way power-adjustable driver's seat
  - 4-way manual-adjustable front passenger seat
  - 60/40 split, sliding and reclining fold-flat second-row bench seats
  - 60/40 split, fold-flat third-row seats
- ✓ Five total USB ports<sup>32</sup> and two 12V outlets<sup>33</sup>
- ✓ 7-in. color LCD Multi-Information Display (MID)
- ✓ Smart Key System with Push Button Start

### Audio Multimedia

- ✓ 8-in. Toyota Audio Multimedia with six speakers
- ✓ Wireless Apple CarPlay<sup>®21</sup> & Android Auto<sup>™20</sup> compatibility
- ✓ SiriusXM<sup>®</sup> with 3-month Platinum Plan trial subscription<sup>23</sup>

### Connected Services

- ✓ Safety Connect<sup>®</sup> with up to 10-year trial.<sup>6</sup> 4G network dependent.
- ✓ Remote Connect-capable; subscription required; select features only.<sup>17</sup> 4G network dependent.
- ✓ Drive Connect-capable; subscription required.<sup>13</sup> 4G network dependent.
- ✓ Service Connect with up to 10-year trial.<sup>9</sup> 4G network dependent.
- ✓ Wi-Fi Connect with up to 3 GB within 30-day trial.<sup>10</sup> 4G network dependent.

### Safety/Convenience

- ✓ Toyota Safety Sense<sup>™</sup> 2.5+ (TSS 2.5+)<sup>24</sup>
- ✓ Star Safety System<sup>™</sup>
- ✓ Eight airbags<sup>34</sup>
- ✓ Rear-seat reminder<sup>35</sup>
- ✓ Blind Spot Monitor (BSM)<sup>31</sup> with Rear Cross-Traffic Alert (RCTA)<sup>36</sup>

### Exterior Features

- ✓ 18-in. machined-finish alloy wheels
- ✓ Power tilt/slide moonroof
- ✓ Roof rails<sup>37</sup>
- ✓ Height-adjustable hands-free power liftgate with jam protection<sup>3</sup>

### Interior Features

- ✓ Qi-compatible wireless smartphone charging<sup>4</sup>
- ✓ Auto-dimming rearview mirror with HomeLink<sup>®38</sup> universal garage door opener
- ✓ SofTex<sup>®</sup>-trimmed<sup>39</sup> front- and second-row seats
  - Heated front seats
  - 10-way power-adjustable driver's seat including power lumbar support
  - 8-way power-adjustable front passenger seat
- ✓ Second-row sunshades

### Packages/Options

- ✓ 12.3-in. Toyota Audio Multimedia
- ✓ Seating for up to eight with second-row bench seat and 60/40 split/fold seats

### Mechanical/Performance

- ✓ Sport-tuned suspension

### Exterior Features

- ✓ LED projector headlights with black accents and LED-strip Daytime Running Lights (DRL)
- ✓ 20-in. black alloy wheels
- ✓ Aggressive mesh front grille with sporty front bumper and lower spoiler
- ✓ Rear lower bumper with chrome-finished lower spoiler trim
- ✓ Color-keyed side rocker panels with chrome-finished lower trim
- ✓ Black roof rails<sup>37</sup>
- ✓ Twin-tip exhaust

### Interior Features

- ✓ Ambient interior lighting

### Packages/Options

- ✓ 12.3-in. Toyota Audio Multimedia
- ✓ 11-speaker JBL<sup>®18</sup> Premium Audio including subwoofer and amplifier
- ✓ Red leather-trimmed front- and second-row seats

## HIGHLANDER MODELS



### Limited

Adds these top features to those offered on XLE

#### Exterior Features

- ✓ Color-keyed heated power outside mirrors with turn signal and blind spot warning indicators,<sup>31</sup> power folding, and puddle lights with integrated Highlander logo
- ✓ High-output LED fog lights
- ✓ 20-in. chrome-finished wheels
- ✓ Front grille in black paint with chrome-plated surround

#### Interior Features

- ✓ Leather-trimmed front- and second-row seats
  - Heated and ventilated front seats
  - 10-way power-adjustable driver's seat including power lumbar support
  - 8-way power-adjustable front passenger seat
  - Seat memory function
- ✓ 12.3-in. color LCD Multi-Information Display (MID)
- ✓ Heated steering wheel
- ✓ Faux wood door trim and ornamental dash trim
- ✓ Front doorsill metal scuff plate
- ✓ One 120V outlet (100W)<sup>40</sup> located on the bottom rear of the center console
- ✓ Ambient interior lighting

#### Audio Multimedia

- ✓ 12.3-in. Toyota Audio Multimedia
- ✓ 11-speaker JBL<sup>®</sup>18 Premium Audio including subwoofer and amplifier

#### Packages/Options

- ✓ Panoramic View Monitor<sup>41</sup>
- ✓ Seating for up to eight with second-row bench seat and 60/40 split/fold seats



### Platinum

Adds these top features to those offered on Limited

#### Exterior Features

- ✓ LED projector headlights with Adaptive Front-Lighting System (AFS),<sup>42</sup> auto leveling and LED-strip Daytime Running Lights (DRL)
- ✓ Front grille in black paint and chrome-plated surround with front lower bumper in silver finish
- ✓ Rear lower bumper accent
- ✓ Rear bumper scuff plate
- ✓ 20-in. alloy wheels
- ✓ Rain-sensing washer-linked variable intermittent windshield wipers
- ✓ Panoramic glass roof with sunshade and front power tilt/slide moonroof with jam protection

#### Interior Features

- ✓ Leather-trimmed front- and second-row seats
  - Heated and ventilated front seats
  - Heated second-row captain's chairs
  - 10-way power-adjustable driver's seat including power lumbar support
  - 8-way power-adjustable front passenger seat
  - Seat memory function
- ✓ 10-in. color Head-Up Display (HUD)
- ✓ Illuminated front doorsill metal scuff plate
- ✓ Panoramic View Monitor<sup>41</sup>
- ✓ Digital rearview mirror with HomeLink<sup>®</sup>38 universal garage door opener



## HIGHLANDER HYBRID MODELS



Hybrid LE



Hybrid LE Nightshade

Adds these top features to those offered on Hybrid LE



Hybrid XLE

Adds these top features to those offered on Hybrid LE

### Mechanical/Performance

- ✓ 2.5-liter 4-cylinder hybrid engine
- ✓ Electronically controlled Continuously Variable Transmission (ECVT)
- ✓ Available Electronic All-Wheel Drive (AWD)
- ✓ Available Trail Mode
- ✓ Up to 36 city/35 highway/36 combined est. mpg rating<sup>1</sup>

### Exterior Features

- ✓ Color-keyed heated power outside mirrors with turn signal and blind spot warning<sup>31</sup> indicators and manual folding feature
- ✓ LED fog lights
- ✓ LED projector headlights with Daytime Running Lights (DRL)
- ✓ LED taillights
- ✓ Front grille in material black with silver-painted surround
- ✓ Height-adjustable power liftgate with jam protection
- ✓ 18-in. painted alloy wheels

### Interior Features

- ✓ Seating for eight with second-row bench seat and 60/40 split/fold seats
- ✓ Three-zone automatic climate control
- ✓ Fabric-trimmed seats
  - 8-way power-adjustable driver's seat
  - 4-way manual-adjustable front passenger seat
  - 60/40 split, sliding and reclining fold-flat second-row bench seats
  - 60/40 split, fold-flat third-row seats
- ✓ Leather-trimmed shift knob and steering wheel
- ✓ Smart Key System with Push Button Start
- ✓ Five USB ports<sup>32</sup> and two 12V outlets<sup>33</sup>
- ✓ 7-in. color LCD Multi-Information Display (MID)

### Audio Multimedia

- ✓ 8-in. Toyota Audio Multimedia with six speakers
- ✓ Wireless Apple CarPlay<sup>®21</sup> & Android Auto<sup>™20</sup> compatibility
- ✓ SiriusXM<sup>®</sup> with 3-month Platinum Plan trial subscription<sup>23</sup>

### Connected Services

- ✓ Safety Connect<sup>®</sup> with up to 10-year trial.<sup>6</sup> 4G network dependent.
- ✓ Remote Connect-capable; subscription required; select features only.<sup>17</sup> 4G network dependent.
- ✓ Drive Connect-capable; subscription required.<sup>13</sup> 4G network dependent.
- ✓ Service Connect with up to 10-year trial.<sup>9</sup> 4G network dependent.
- ✓ Wi-Fi Connect with up to 3 GB within 30-day trial.<sup>10</sup> 4G network dependent.

### Safety/Convenience

- ✓ Toyota Safety Sense<sup>™</sup> 2.5+ (TSS 2.5+)<sup>24</sup>
- ✓ Star Safety System<sup>™</sup>
- ✓ Eight airbags<sup>34</sup>
- ✓ Rear-seat reminder<sup>35</sup>
- ✓ Blind Spot Monitor (BSM)<sup>31</sup> with Rear Cross-Traffic Alert (RCTA)<sup>36</sup>

### Exterior Features

- ✓ Black-capped heated power outside mirrors with turn signal and blind spot warning<sup>31</sup> indicators and manual folding feature
- ✓ Black door handles
- ✓ Black-painted front grille with black-painted surround
- ✓ 18-in. black alloy wheels
- ✓ Black overlay badging
- ✓ Black rear spoiler and shark-fin antenna

### Exterior Features

- ✓ 18-in. machined-finish alloy wheels
- ✓ Power tilt/slide moonroof
- ✓ Roof rails<sup>37</sup>
- ✓ Height-adjustable hands-free power liftgate with jam protection<sup>3</sup>

### Interior Features

- ✓ Qi-compatible wireless smartphone charging<sup>4</sup>
- ✓ Auto-dimming rearview mirror with HomeLink<sup>®38</sup> universal garage door opener
- ✓ SofTex<sup>®</sup>-trimmed<sup>39</sup> front- and second-row seats
  - Heated front seats
  - 10-way power-adjustable driver's seat including power lumbar support
  - 8-way power-adjustable front passenger seat
- ✓ Second-row sunshades

### Packages/Options

- ✓ 12.3-in. Toyota Audio Multimedia
- ✓ Seating for up to eight with second-row bench seat and 60/40 split/fold seats

## HIGHLANDER HYBRID MODELS



### Hybrid XLE Nightshade

Adds these top features to those offered on Hybrid XLE

#### Exterior Features:

- ✓ 18-in. black alloy wheels
- ✓ Black roof rails<sup>37</sup>
- ✓ Black-capped heated power outside mirrors with turn signal and blind spot warning<sup>31</sup> indicators and manual folding feature
- ✓ Black-painted front grille with black-painted surround
- ✓ Black door handles
- ✓ Black overlay badging
- ✓ Black rear spoiler and shark-fin antenna

#### Interior Features:

- ✓ Black two-tone SofTex<sup>®</sup>-trimmed<sup>39</sup> mixed media front- and second-row seats with unique embossed seat pattern with silver accent stitching
  - Heated front seats
  - 10-way power-adjustable driver's seat including power lumbar support
  - 8-way power-adjustable front passenger seat



### Hybrid Limited

Adds these top features to those offered on Hybrid XLE

#### Exterior Features

- ✓ Color-keyed heated power outside mirrors with turn signal and blind spot warning indicators,<sup>31</sup> power folding and puddle lights with integrated Highlander logo
- ✓ High-output LED fog lights
- ✓ 20-in. chrome-finished wheels
- ✓ Front grille in black paint with chrome-plated surround

#### Interior Features

- ✓ Leather-trimmed front- and second-row seats
  - Heated and ventilated front seats
  - 10-way power-adjustable driver's seat including power lumbar support
  - 8-way power-adjustable front passenger seat
  - Seat memory function
- ✓ 12.3-in. color LCD Multi-Information Display (MID)
- ✓ Heated steering wheel
- ✓ Faux wood door trim and ornamental dash trim
- ✓ Front doorsill metal scuff plate
- ✓ Two 120V outlets (1500W shared)<sup>43</sup> located on the bottom rear of center console and in the luggage area
- ✓ Ambient interior lighting

#### Audio Multimedia

- ✓ 12.3-in. Toyota Audio Multimedia
- ✓ 11-speaker JBL<sup>®</sup>18 Premium Audio including subwoofer and amplifier

#### Packages/Options

- ✓ Panoramic View Monitor<sup>41</sup>



### Hybrid Platinum

Adds these top features to those offered on Hybrid Limited

#### Exterior Features

- ✓ LED projector headlights with Adaptive Front-Lighting System (AFS),<sup>42</sup> auto leveling and LED-strip Daytime Running Lights (DRL)
- ✓ Front grille in black paint and chrome-plated surround with front lower bumper in silver finish
- ✓ Rear lower bumper accent
- ✓ Rear bumper scuff plate
- ✓ 20-in. alloy wheels
- ✓ Rain-sensing washer-linked variable intermittent windshield wipers
- ✓ Panoramic glass roof with sunshade and front power tilt/slide moonroof with jam protection

#### Interior Features

- ✓ Leather-trimmed front- and second-row seats
  - Heated and ventilated front seats
  - Heated second-row captain's chairs
  - 10-way power-adjustable driver's seat including power lumbar support
  - 8-way power-adjustable front passenger seat
  - Seat memory function
- ✓ 10-in. color Head-Up Display (HUD)
- ✓ Illuminated front doorsill metal scuff plate
- ✓ Panoramic View Monitor<sup>41</sup>
- ✓ Digital rearview mirror with HomeLink<sup>®</sup>38 universal garage door opener

HIGHLANDER COLORS & TRIMS



Midnight Black Metallic



Blueprint



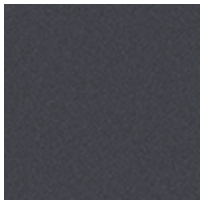
Moon Dust<sup>44</sup>



Ruby Flare Pearl<sup>44</sup>



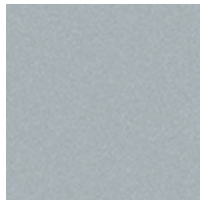
Cypress



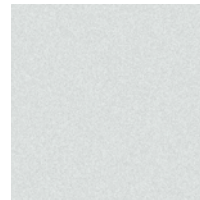
Magnetic Gray Metallic



Cement

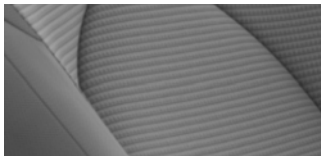


Celestial Silver Metallic



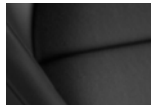
Wind Chill Pearl<sup>44</sup>

LE and Hybrid LE fabric shown in Graphite

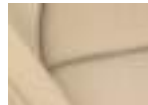


Black

XLE and Hybrid XLE SofTex<sup>®39</sup> trim shown in Graphite

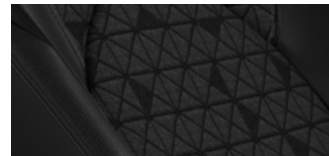


Black



Harvest Beige

Hybrid XLE Nightshade mixed-media trim shown in Black

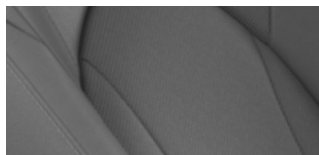


XSE mixed-media trim shown in Black

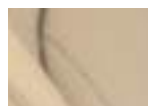


Cockpit Red leather trim

Limited and Hybrid Limited leather trim shown in Graphite

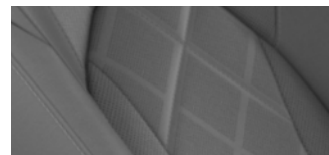


Black

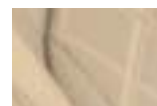


Harvest Beige

Platinum and Hybrid Platinum leather trim shown in Graphite



Black



Harvest Beige



Glazed Caramel



HIGHLANDER WHEELS



LE 18-in. alloy wheel



XLE 18-in. machined-finish alloy wheel



XSE 20-in. black alloy wheel



Limited 20-in. chrome-finished wheel



Platinum 20-in. alloy wheel



Nightshade 18-in. black alloy wheel

## HIGHLANDER ACCESSORIES

This is a great way to add extra personality to your Highlander. Not every accessory is available in your area, so for a complete list of accessories, go to [toyota.com/highlander/accessories](http://toyota.com/highlander/accessories).



Roof rack cross bars<sup>37</sup>



Running boards



Black emblem overlay



Rear bumper protector



Integrated dashcam<sup>45</sup>



Cargo net



Cargo liner



All-weather floor liner<sup>46</sup>



Illuminated doorsill

## WARRANTIES

Every Toyota Car, Truck and SUV is built to exceptional standards. And that's not idle boasting. We back it up with these Limited Warranty Coverages:

**Basic:** 36 months/36,000 miles (all components other than normal wear and maintenance items).

**Hybrid-Related Component Coverage:** Hybrid-related components, including the battery control module, hybrid control module and inverter with converter, are covered for 8 years/100,000 miles. Refer to applicable *Warranty and Maintenance Guide* for details.

**Hybrid Battery:** HV battery is covered for 10 years or 150,000 miles, whichever comes first. Warranty coverage is subject to terms and conditions. Refer to applicable *Warranty and Maintenance Guide* for details.

**Powertrain:** 60 months/60,000 miles (engine, transmission/transaxle, drive system, seatbelts and airbags).

**Rust-Through:** 60 months/unlimited miles (corrosion perforation of sheet metal).

**Emissions:** Coverages vary under Federal and California regulations. Refer to applicable *Warranty and Maintenance Guide* for details.

**Accessories:** For Genuine Toyota Accessories purchased at the time of the new vehicle purchase, the Toyota Accessory Warranty coverage is in effect for 36 months/36,000 miles from the vehicle's in-service date, which is the same coverage as the Toyota New Vehicle Limited Warranty.

For Genuine Toyota Accessories purchased after the new vehicle purchase the coverage is 12 months, regardless of mileage, from the date the accessory was installed on the vehicle, or the remainder of any applicable new vehicle warranty, whichever provides greater coverage.

You may be eligible for transportation assistance if it's necessary that your vehicle be kept overnight for repairs covered under warranty. Please see your authorized Toyota dealership for further details.

For complete details about Toyota's warranties, please visit [www.toyota.com](http://www.toyota.com), refer to the applicable *Warranty and Maintenance Guide* or see your Toyota dealer.

# HIGHLANDER FEATURES<sup>47</sup>

S = Standard O = Optional P = Available as part of a package

Exterior	LE	XLE	XSE	Limited	Platinum	Hybrid LE	Hybrid LE Nightshade	Hybrid XLE	Hybrid XLE Nightshade	Hybrid Limited	Hybrid Platinum
Smart Key System on front doors and liftgate with Push Button Start, remote keyless entry system with lock, unlock, panic and liftgate functions; remote illuminated entry	S	S	S	S	S	S	S	S	S	S	S
Color-keyed heated power outside mirrors with turn signal and blind spot warning <sup>31</sup> indicators, and manual folding feature	S	S				S		S			
Black-capped heated power outside mirrors with turn signal and blind spot warning indicators, <sup>31</sup> and manual folding feature			S				S		S		
Color-keyed heated power outside mirrors with turn signal and blind spot warning <sup>31</sup> indicators, power folding, reverse tilt-down with memory feature, and puddle lights with integrated Highlander logo				S	S					S	S
LED projector headlights with Daytime Running Lights (DRL)	S	S				S	S	S	S		
LED projector headlights with black accents and LED-strip Daytime Running Lights (DRL)			S								
LED projector headlights with LED-strip Daytime Running Lights (DRL)				S						S	
LED projector headlights with Adaptive Front-Lighting System (AFS), <sup>42</sup> auto leveling and LED-strip Daytime Running Lights (DRL)					S						S
LED fog lights	S	S	S			S	S	S	S		
High-output LED fog lights				S	S					S	S
LED taillights	S	S	S	S	S	S	S	S	S	S	S
Washer-linked variable intermittent windshield wipers and intermittent rear wiper	S	S	S	S		S	S	S	S	S	
Rain-sensing washer-linked variable intermittent windshield wipers and intermittent rear wiper					S						S
Windshield wiper de-icer	S	S	S	S	S	S	S	S	S	S	S
Rear liftgate windshield defogger	S	S	S	S	S	S	S	S	S	S	S
Rear liftgate windshield washer and backup camera <sup>48</sup> washer	S	S	S	S	S	S	S	S	S	S	S
High Solar Energy-Absorbing (HSEA) glass on front and rear side windows	S	S	S	S	S	S	S	S	S	S	S
Privacy glass on rear side, quarter and liftgate windows	S	S	S	S	S	S	S	S	S	S	S
Acoustic noise-reducing front side windows				S	S					S	S
18-in. painted alloy wheels and P235/65R18 tires	S					S					
18-in. machined-finish alloy wheels and P235/65R18 tires		S							S		
18-in. black alloy wheels and P235/65R18 tires							S		S		
20-in. black alloy wheels and P235/55R20 tires			S								
20-in. chrome-finished wheels and P235/55R20 tires				S						S	
20-in. alloy wheels and P235/55R20 tires					S						S
Black overlay badging							S		S		
Black-painted front grille with silver-painted surround	S	S				S		S			
Black-painted front grille with black-painted surround							S		S		
Black mesh front grille with sporty front bumper and lower spoiler			S								
Black-painted front grille with chrome-plated surround				S						S	
Black-painted front grille with chrome-plated surround and front lower bumper in silver finish					S						S
Grille shutters						S	S	S	S	S	S
Rear lower bumper in black finish	S	S				S	S	S	S		
Rear lower bumper in dark gray metallic finish				S						S	
Rear lower bumper in gray metallic finish with chrome-finished lower spoiler trim			S								
Rear lower bumper in silver finish					S						S
Color-keyed side rocker panels and lower molding	S	S		S	S	S	S	S	S	S	S
Color-keyed side rocker panels with lower trim			S								
Color-keyed outside door handles	S	S	S	S	S	S		S		S	S
Black outside door handles							S		S		
Rear spoiler with LED center high-mount stop light	S	S	S	S	S	S	S	S	S	S	S
Black rear spoiler and shark-fin antenna							S		S		
A-pillar in black low-gloss film	S	S				S	S	S	S		
A-pillar in black high-gloss film			S	S	S					S	S
Power tilt/slide moonroof with sunshade and one-touch open/close with jam protection		S	S	S				S	S	S	



# HIGHLANDER FEATURES<sup>47</sup>

S = Standard O = Optional P = Available as part of a package

Exterior (continued)	LE	XLE	XSE	Limited	Platinum	Hybrid LE	Hybrid LE Nightshade	Hybrid XLE	Hybrid XLE Nightshade	Hybrid Limited	Hybrid Platinum
Panoramic glass roof with sunshade and front power tilt/slide moonroof with jam protection					S						S
Height-adjustable power liftgate with jam protection	S					S	S				
Height-adjustable hands-free power liftgate with jam protection <sup>3</sup>		S	S	S	S			S	S	S	S
Silver-finish roof rails <sup>37</sup>		S		S	S			S		S	S
Black-finish roof rails <sup>37</sup>			S						S		
Rear bumper scuff plate					S						S
Twin-tip exhaust			S								

## Interior

Power windows with auto up/down in all positions and jam protection	S	S	S	S	S	S	S	S	S	S	S
Three-zone automatic climate control with air filter, separate second-row control panel, individual temperature settings for driver, front passenger and rear-seat passengers, and second- and third-row vents	S	S	S	S	S	S	S	S	S	S	S
Black interior door handles	S					S	S				
Chrome-finished interior door handles		S	S	S	S			S	S	S	S
Power door locks with shift-linked automatic lock/unlock feature	S	S	S	S	S	S	S	S	S	S	S
Soft-touch roll-top center console (15L) with removable utility tray	S	S	S	S	S	S	S	S	S	S	S
Qi-compatible wireless smartphone charging <sup>4</sup> with charge indicator light		S	S	S	S			S	S	S	S
Soft-touch in-dash bottle-level shelf	S	S	S	S	S	S	S	S	S	S	S
Fourteen cup and bottle holders	S	S	S	S	S	S	S	S	S	S	S
Dual sun visors with sliding function and illuminated vanity mirrors	S	S	S	S	S	S	S	S	S	S	S
Overhead console with conversation mirror, sunglasses storage and maplights	S	S	S	S	S	S	S	S	S	S	S
Day/night rearview mirror	S					S	S				
Auto-dimming rearview mirror with HomeLink <sup>38</sup> universal garage door opener		S	S	S				S	S	S	
Digital rearview mirror with HomeLink <sup>38</sup> universal garage door opener					S						S
Fabric-trimmed front- and second-row seats; 8-way power-adjustable driver's seat; 4-way manual-adjustable front passenger seat	S					S	S				
SofTex <sup>®</sup> -trimmed <sup>39</sup> front- and second-row seats; heated front seats; 10-way power-adjustable driver's seat including power lumbar support; 8-way power-adjustable front passenger seat		S	S					S			
Black two-tone SofTex <sup>®</sup> -trimmed <sup>39</sup> /mixed-media front- and second-row seats with contrast stitching; heated front seats; 10-way power-adjustable driver's seat including power lumbar support; 8-way power-adjustable front passenger seat									S		
Leather-trimmed front- and second-row seats; heated and ventilated front seats; 10-way power-adjustable driver's seat including power lumbar support; 4-way power-adjustable front passenger seat; seat memory function				S	S					S	S
Leather-trimmed front- and second-row seats; heated front seats; 10-way power-adjustable driver's seat including power lumbar support; 8-way power-adjustable front passenger seat			O								
8-passenger seating with 60/40 split, sliding and reclining fold-flat second-row bench seats; 60/40 split, fold-flat third-row seats with sliding headrests and recline function	S	O		O		S	S	O			
7-passenger seating with second-row fold-down captain's chairs and fold-down inboard armrests, adjustable headrests and two cup holders mounted on the floor; and 60/40 split, fold-flat third-row seats with sliding headrests and recline function		S	S	S	S			S	S	S	S
Heated second row					S						S
Second-row sunshades		S	S	S	S			S	S	S	S
Leather-trimmed shift knob and tilt/telescopic leather-trimmed steering wheel with audio, Multi-Information Display (MID), Bluetooth <sup>®49</sup> hands-free phone, voice-command, Dynamic Radar Cruise Control (DRCC), <sup>26</sup> Lane Departure Alert (LDA), <sup>27</sup> Lane Steering Assist (LSA) <sup>27</sup> and multimedia information controls	S	S	S			S	S	S	S		
Leather-trimmed shift knob and heated tilt/telescopic leather-trimmed steering wheel with audio, Multi-Information Display (MID), Bluetooth <sup>®49</sup> hands-free phone, voice command, Dynamic Radar Cruise Control (DRCC), <sup>26</sup> Lane Departure Alert (LDA), <sup>27</sup> Lane Steering Assist (LSA) <sup>32</sup> and multimedia information controls				S	S					S	S

# HIGHLANDER FEATURES<sup>47</sup>

S = Standard O = Optional P = Available as part of a package

Interior (continued)	LE	XLE	XSE	Limited	Platinum	Hybrid LE	Hybrid LE Nightshade	Hybrid XLE	Hybrid XLE Nightshade	Hybrid Limited	Hybrid Platinum
7-in. color LCD Multi-Information Display (MID) in meter cluster with odometer, trip/average fuel economy, cruising range, average speed, AWD torque distribution (AWD models only), cruise control guide, audio status, hands-free incoming call notices, telephone information, Eco Driving Indicator, and energy monitor (HV models only)	S	S	S			S	S	S	S		
12.3-in. color LCD Multi-Information Display (MID) with odometer, trip/average fuel economy, cruising range, average speed, AWD torque distribution (AWD models only), cruise control guide, audio details, hands-free incoming call notices, telephone information, Eco Driving Indicator, and energy monitor (HV models only)				S	S					S	S
10-in. color Head-Up Display (HUD) with speedometer and Road Sign Assist (RSA), <sup>30</sup> navigation <sup>50</sup> and Hybrid System Indicator (hybrid models only)					S						S
Five USB ports <sup>32</sup> and two 12V outlets <sup>33</sup>	S	S	S	S	S	S	S	S	S	S	S
One 120V outlet <sup>40</sup> (100W) located on the bottom rear of the center console				S	S						
Two 120V outlets (1500W shared) <sup>43</sup> located on the bottom rear of center console and in the luggage area										S	S
Ambient interior lighting			S	S	S					S	S
Illuminated front doorsill metal scuff plate					S						S
Painted door, console and dashboard trim	S	S				S	S	S	S		
Ornamental dash trim and faux wood door trim				S	S					S	S
Front doorsill metal scuff plate				S						S	
Cargo area tonneau cover				S	S					S	S
Overhead console with conversation mirror, sunglasses storage and maplights	S	S	S	S	S	S	S	S	S	S	S
Digital clock	S	S	S	S	S	S	S	S	S	S	S

## Audio Multimedia

8-in. Toyota Audio Multimedia with wireless Apple CarPlay <sup>21</sup> & Android Auto <sup>TM20</sup> compatibility, USB media port, <sup>32</sup> four USB charge ports, <sup>32</sup> hands-free phone capability and music streaming <sup>49</sup> via Bluetooth <sup>49</sup> wireless technology, SiriusXM <sup>®</sup> with 3-month Platinum Plan trial subscription. <sup>23</sup> See <a href="http://toyota.com/audio-multimedia">toyota.com/audio-multimedia</a> for details.	S	S	S			S	S	S	S		
12.3-in. Toyota Audio Multimedia with wireless Apple CarPlay <sup>21</sup> & Android Auto <sup>TM20</sup> compatibility, USB media port, <sup>32</sup> four USB charge ports, <sup>32</sup> hands-free phone capability and music streaming <sup>49</sup> via Bluetooth <sup>49</sup> wireless technology, SiriusXM <sup>®</sup> with 3-month Platinum Plan trial subscription. <sup>23</sup> See <a href="http://toyota.com/audio-multimedia">toyota.com/audio-multimedia</a> for details.		O	O	S	S			O	O	S	S
11-speaker JBL <sup>®18</sup> Premium Audio including subwoofer and amplifier			O	S	S					S	S

## Connected Services

Safety Connect <sup>86</sup> — includes Emergency Assistance button, Enhanced Roadside Assistance, <sup>7</sup> Automatic Collision Notification, and Stolen Vehicle Locator. <sup>8</sup> Subscription required. Up to 10-year trial included. <sup>6</sup> 4G network dependent.	S	S	S	S	S	S	S	S	S	S	S
Wi-Fi Connect <sup>10</sup> — with AT&T Wi-Fi hotspot and Integrated Streaming (Apple Music <sup>®11</sup> and Amazon Music <sup>12</sup> ) compatibility. 1-month Integrated Streaming trial for music services. Up to 30-day or 3 GB trial on Wi-Fi hotspot. <sup>10</sup> 4G network dependent.	S	S	S	S	S	S	S	S	S	S	S
Service Connect with up to 10-year trial <sup>9</sup> — receive personalized maintenance updates and vehicle health reports. Subscription required. <sup>9</sup> 4G network dependent.	S	S	S	S	S	S	S	S	S	S	S
Remote Connect <sup>17</sup> — remotely interact with your vehicle through the Toyota app <sup>51</sup> via your smartwatch. Depending on grade, allows you to lock/unlock doors, start and stop the vehicle, locate your last parked location, check vehicle status and monitor guest drivers. Subscription required. 1-year trial. <sup>17</sup> 4G network dependent.	S	S	S	S	S	S	S	S	S	S	S
Drive Connect <sup>13</sup> — includes Cloud Navigation <sup>16</sup> with Google Points of Interest (POI) data, Intelligent Assistant <sup>15</sup> with Hey, Toyota, and Destination Assist. <sup>14</sup> 1-year trial included with 12.3-in. Toyota Audio Multimedia system. Available subscription with 8-in. Toyota Audio Multimedia system. <sup>13</sup> 4G network dependent.	O	O	O	O	O	O	O	O	O	O	O

# HIGHLANDER FEATURES<sup>47</sup>

S = Standard O = Optional P = Available as part of a package

Safety and Convenience	LE	XLE	XSE	Limited	Platinum	Hybrid LE	Hybrid LE Nightshade	Hybrid XLE	Hybrid XLE Nightshade	Hybrid Limited	Hybrid Platinum
Toyota Safety Sense™ 2.5+ (TSS 2.5+) <sup>24</sup>	S	S	S	S	S	S	S	S	S	S	S
Star Safety System™ — includes Enhanced Vehicle Stability Control (VSC), <sup>52</sup> Traction Control (TRAC), Anti-lock Brake System (ABS), Electronic Brake-force Distribution (EBD), Brake Assist (BA) <sup>53</sup> and Smart Stop Technology® (SST) <sup>54</sup>	S	S	S	S	S						
<b>STAR SAFETY SYSTEM™</b> Star Safety System™ — includes Electronically Controlled Braking (ECB), Vehicle Dynamics Integrated Management (VDIM), <sup>55</sup> Enhanced Vehicle Stability Control (VSC), <sup>52</sup> Traction Control (TRAC), Anti-lock Brake System (ABS), Electronic Brake-force Distribution (EBD), Brake Assist (BA) <sup>53</sup> and Smart Stop Technology® (SST) <sup>54</sup>						S	S	S	S	S	S
Eight airbags <sup>34</sup> — driver airbag, front passenger airbag, driver knee airbag, front passenger seat cushion airbag, front side airbags, curtain shield airbags	S	S	S	S	S	S	S	S	S	S	S
3-point seatbelts for all seating positions; driver's-side Emergency Locking Retractor (ELR) and Automatic/Emergency Locking Retractor (ALR/ELR) on all passenger seatbelts	S	S	S	S	S	S	S	S	S	S	S
LATCH (Lower Anchors and Tethers for CHildren) includes lower anchors and tethers on outboard second-row seats and tether anchor on middle of second- and third-row seats	S	S	S	S	S	S	S	S	S	S	S
Child-protector rear door locks and power window lockout control	S	S	S	S	S	S	S	S	S	S	S
Driver and front passenger seatbelt warning	S	S	S	S	S	S	S	S	S	S	S
Rear passenger seatbelt reminder	S	S	S	S	S	S	S	S	S	S	S
Rear-seat reminder <sup>25</sup>	S	S	S	S	S	S	S	S	S	S	S
Adjustable front seatbelt shoulder anchors and driver and front passenger seatbelt pretensioners with force limiters	S	S	S	S	S	S	S	S	S	S	S
Downhill Assist Control (DAC) <sup>56</sup>	O	O	O	O	O						
Anti-theft system with engine immobilizer <sup>57</sup> and engine immobilizer <sup>57</sup> alarm	S	S	S	S	S	S	S	S	S	S	S
Tire Pressure Monitor System (TPMS) <sup>58</sup> (individual tires)	S	S	S	S	S	S	S	S	S	S	S
Snow Mode + Drive Mode Select (Eco, Normal, Sport)	S	S	S	S	S						
Snow Mode + Drive Mode Select (Eco, Normal, Sport) + Multi-Terrain Select (MTS) (Mud/Sand, Rock/Dirt, Normal)	O	O	O	O	O						
Hill Start Assist Control (HAC) <sup>59</sup>	S	S	S	S	S	S	S	S	S	S	S
Trail Mode						O	O	O	O	O	O
Front and Rear Parking Assist with Automatic Braking (PA w/AB) <sup>60</sup>				S	S					S	S
Dynamic Torque Vectoring AWD with Driveline Disconnect; Multi-Terrain Select (MTS) with dial			O	O	O						
Predictive Fuel-Efficient Drive <sup>61</sup>								O	O	S	S
Backup camera <sup>48</sup> with projected path	S	S	S			S	S	S	S		
Backup camera <sup>48</sup> with dynamic gridlines				S						S	
Panoramic View Monitor <sup>41</sup> with 360-degree Overhead View in low-speed drive and reverse, and Curb View				O	S					O	S

# HIGHLANDER SPECIFICATIONS

S = Standard O = Optional P = Available as part of a package

## Mechanical/Performance

	LE	XLE	XSE	Limited	Platinum	Hybrid LE	Hybrid LE Nightshade	Hybrid XLE	Hybrid XLE Nightshade	Hybrid Limited	Hybrid Platinum
<b>ENGINE</b>											
Gasoline engine — 2.4-liter 4-cylinder turbocharged Double Overhead Cam (DOHC) 16-valve D-4S injection engine with Dual Variable Valve Timing with intelligence (VVT-i) with Stop and Start Engine System (S&S); <sup>62</sup> 265 hp @ 6000 rpm; 310 lb.-ft. @ 1700-3600 rpm	S	S	S	S	S						
Hybrid powertrain — 2.5-liter L4HV Double Overhead Cam (DOHC) 16-valve D-4S injection engine with Dual VVT-iE (Variable Valve Timing-intelligent intake controlled by electric motor); combined net 243 hp, includes combustion engine with 186 hp @ 6000 rpm; 175 lb.-ft. @ 4400 rpm						S	S	S	S	S	S
<b>EMISSION RATING</b>											
Super Ultra Low Emission Vehicle 30 (SULEV 30) <sup>63</sup>	S	S	S	S	S	S	S	S	S	S	S
<b>ELECTRIC MOTORS</b>											
Permanent magnet synchronous motors (two front, FWD)						S	S	S	S	S	S
Permanent magnet synchronous motors (two front, one rear, AWD)						O	O	O	O	O	O
<b>TRACTION BATTERY</b>											
Battery type: sealed Nickel-Metal Hydride (Ni-MH)						S	S	S	S	S	S
<b>TRANSMISSION</b>											
Direct Shift-8AT 8-speed Electronically Controlled automatic Transmission (ECT)	S	S	S	S	S						
Electronically controlled Continuously Variable Transmission (ECVT) with sequential shift mode						S	S	S	S	S	S
<b>DRIVETRAIN</b>											
Front-Wheel Drive (FWD)	S	S	S	S	S	S	S	S	S	S	S
All-Wheel Drive (AWD)	O	O									
Dynamic Torque Vectoring AWD			O	O	O						
Electronic On-Demand AWD system						O	O	O	O	O	O
<b>BODY</b>											
Reinforced unibody	S	S	S	S	S	S	S	S	S	S	S
<b>SUSPENSION</b>											
Independent MacPherson strut front suspension with stabilizer bar; trailing-wishbone suspension	S	S		S	S	S	S	S	S	S	
Sport-tuned independent MacPherson strut front suspension with stabilizer bar; trailing-wishbone suspension			S								
<b>STEERING</b>											
Electric Power Steering (EPS); power-assisted rack-and-pinion	S	S	S	S	S	S	S	S	S	S	S
Turning radius (ft.)	18.7	18.7	18.7	18.7	18.7	18.7	18.7	18.7	18.7	18.7	18.7
Turning circle diameter (ft.)	37.4	37.4	37.4	37.4	37.4	37.4	37.4	37.4	37.4	37.4	37.4
<b>BRAKES</b>											
Power-assisted ventilated 13.3-in. front disc brakes; solid 13.3-in. rear disc brakes and Star Safety System™	S	S	S	S	S						
Power-assisted ventilated 13.3-in. front disc brakes; solid 13.3-in. rear disc brakes with Electronically Controlled Braking (ECB) system, integrated regenerative braking and Star Safety System™						S	S	S	S	S	S



# HIGHLANDER SPECIFICATIONS

S = Standard O = Optional P = Available as part of a package

Dimensions	LE	XLE	XSE	Limited	Platinum	Hybrid LE	Hybrid LE Nightshade	Hybrid XLE	Hybrid XLE Nightshade	Hybrid Limited	Hybrid Platinum
<b>EXTERIOR (in.)</b>											
Overall length/width	194.9/76.0	194.9/76.0	197.4/76.0	194.9/76.0	194.9/76.0	194.9/76.0	194.9/76.0	194.9/76.0	194.9/76.0	194.9/76.0	194.9/76.0
Unloaded height (no antenna)	68.1	68.1	68.1	68.1	68.1	68.1	68.1	68.1	68.1	68.1	68.1
Wheelbase	112.2	112.2	112.2	112.2	112.2	112.2	112.2	112.2	112.2	112.2	112.2
Track (front/rear)	65.3/65.4	65.3/65.4	65.3/65.4	65.3/65.4	65.3/65.4	65.3/65.4	65.3/65.4	65.3/65.4	65.3/65.4	65.3/65.4	65.3/65.4
<b>INTERIOR (front/second-row/third-row seats) (in.)</b>											
Head room	41.2/39.4/36.1	39.6/39.4/36.1	39.6/39.4/36.1	39.6/39.4/36.1	38.4/37.1/36.1	41.2/39.4/36.1	41.2/39.4/36.1	39.6/39.4/36.1	39.6/39.4/36.1	39.6/39.4/36.1	38.4/37.1/36.1
Shoulder room (with shade)		59.0/58.4/55.0	59.0/58.4/55.0	59.0/58.4/55.0	59.0/58.4/55.0			59.0/58.4/55.0	59.0/58.4/55.0	59.0/58.4/55.0	59.0/58.4/55.0
Shoulder room (w/o shade)	59.0/58.7/55.0					59.0/58.7/55.0	59.0/58.7/55.0				
Hip room	57.2/57.0/45.6	57.2/57.0/45.6	57.2/57.0/45.6	57.2/57.0/45.6	57.2/57.0/45.6	57.2/57.0/45.6	57.2/57.0/45.6	57.2/57.0/45.6	57.2/57.0/45.6	57.2/57.0/45.6	57.2/57.0/45.6
Leg room	42.0/38.7/28.0	42.0/38.7/28.0	42.0/38.7/28.0	42.0/38.7/28.0	42.0/38.7/28.0	42.0/38.7/28.0	42.0/38.7/28.0	42.0/38.7/28.0	42.0/38.7/28.0	42.0/38.7/28.0	42.0/38.7/28.0
<b>OFF-HIGHWAY</b>											
Approach/departure angle (degrees)	18.1/23.5	18.1/23.5	18.1/23.5	18.1/23.5	18.1/23.5	18.1/22.7	18.1/22.7	18.1/22.7	18.1/22.7	18.1/22.7	18.1/22.7
Ramp breakover angle	16.7	16.7	16.7	16.7	16.7	16.7	16.7	16.7	16.7	16.7	16.7
Ground clearance (in.)	8	8	8	8	8	8	8	8	8	8	8
<b>Weights/Capacities</b>											
Curb weight (lb.) (standard seating config.)	4155	4199	4221	4265	4265	4330	4330	4365	4365	4430	4430
Gross Vehicle Weight Rating (GVWR) (lb.) (standard seating config.)	5870	5870	5870	5870	5870	5960	5960	5960	5960	5960	5960
EPA passenger volume (cu. ft.) without moonroof, first/second/third row	141.8					141.8	141.8				
EPA passenger volume (cu. ft.) with moonroof, first/second/third row		139.5	139.5	139.5				139.5	139.5	139.5	
EPA passenger volume (cu. ft.) with panoramic moonroof, first/second/third row					136.3						136.3
Cargo volume (cu. ft.) <sup>64</sup> behind front/second-row/third-row seats	84.3/48.4/16.0	84.3/48.4/16.0	84.3/48.4/16.0	84.3/48.4/16.0	84.3/48.4/16.0	84.3/48.4/16.0	84.3/48.4/16.0	84.3/48.4/16.0	84.3/48.4/16.0	84.3/48.4/16.0	84.3/48.4/16.0
Fuel tank (gal.)	17.9	17.9	17.9	17.9	17.9	17.1	17.1	17.1	17.1	17.1	17.1
Seating capacity (standard/optional)	8	7/8	7	7/8	7	8	8	7/8	7	7	7
<b>TOWING</b>											
Towing capacity (lb.) <sup>2</sup>	5000	5000	5000	5000	5000	3500	3500	3500	3500	3500	3500
Trailer-Sway Control (TSC) <sup>65</sup>	S	S	S	S	S	S	S	S	S	S	S
<b>TIRES</b>											
All-Season tires	S	S	S	S	S	S	S	S	S	S	S
Temporary spare tire	S	S	S	S	S	S	S	S	S	S	S

## Mileage Estimates (mpg city/highway/combined)<sup>1</sup>

Hybrid FWD						36/35/36	36/35/36	36/35/36	36/35/36	36/35/36	36/35/36
4-cylinder Gas FWD	22/29/25	22/29/25	22/29/25	22/29/25	22/29/25						

## DISCLOSURES

1. 2024 projected EPA-estimated mpg rating estimates as determined by manufacturer. EPA estimates not available at time of posting. Use for comparison purposes only. Your mileage will vary for many reasons, including your vehicle's condition and how/where you drive. See [www.fueleconomy.gov](http://www.fueleconomy.gov). 2. Never tow beyond a vehicle's published towing capacities. Before towing, confirm your vehicle and trailer are compatible, hooked up and loaded properly and that you have any necessary additional equipment. The maximum you can tow depends on base curb weight plus the total weight of any cargo, occupants, and added vehicle equipment. Follow all instructions in your *Owner's Manual*. 3. Water, weather, dirt, and other conditions may cause the hands-free power liftgate sensor to not operate properly. See *Owner's Manual* for limitations. 4. Charging may not be compatible with all mobile phones, smart devices, tablets, e-readers, MP3/WMA players and like products. 5. Toyota Connected Services depend on certain factors outside of Toyota's control in order to operate, including cellular network availability and GPS signal. Without either of these things, operability may be limited or precluded, including access to response center and emergency support. Services vary by vehicle and are subject to change at any time without notice. Requires app download/registration and subscription after trial (if applicable). Terms of Use apply. Data charges may apply. See *Owner's Manual* and <https://www.toyota.com/connected-services/>. For Toyota's Connected Services' data collection, use, sharing and retention practices, please visit <https://www.toyota.com/support/privacy-notice/>. All trials begin on original purchase or lease date of new vehicle, with the exception of Wi-Fi for which trial begins at time of activation. Paid subscription required after trial (if applicable). 6. Safety Connect® depends on factors outside of Toyota's control in order to operate, including cellular network availability and GPS signal. Without either of these things, operability may be limited or precluded, including access to response center and emergency support. Stolen vehicle police report required to use Stolen Vehicle Locator. If subscription includes Automatic Collision Notification, it will activate only in limited circumstances. Services vary by vehicle and are subject to change at any time without notice. Terms of Use apply. Data charges may apply. See *Owner's Manual* and <https://www.toyota.com/connected-services/>. For Toyota's Connected Services' data collection, use, sharing and retention practices, please visit <https://www.toyota.com/support/privacy-notice/>. A Safety Connect® trial is included for up to 10 years on select vehicles with paid Connected Services packages. See your Toyota dealer for details. 4G network dependent. 7. Requires cellular network availability, a cellular connection and GPS signal. May not work in all areas. Service may vary by vehicle and region. See Toyota dealer for details and exclusions. 8. Building and/or parking structures may limit system effectiveness. Stolen vehicle police report required to use Stolen Vehicle Locator. For additional assistance contact the Toyota Brand Engagement Center at 1-800-331-4331. 9. Service Connect depends on certain factors outside of Toyota's control in order to operate, including cellular network availability and GPS signal. Without either of these things, operability may be limited or precluded. Information provided is based on the last time data was collected from vehicle and is not real-time data. Services vary by vehicle and are subject to change at any time without notice. Terms of Use apply. Data charges may apply. See usage precautions and service limitations in *Owner's Manual* and <https://www.toyota.com/connected-services/>. To learn about Toyota's Connected Services' data collection, use, sharing and retention practices, please visit <https://www.toyota.com/support/privacy-notice/>. The Service Connect trial is included for up to 10 years. 4G network dependent. 10. Service not available everywhere or in every vehicle. Depends on cellular network availability and GPS signal. Without either of these things, operability may be limited or precluded. Up to 5 devices can be supported using in-vehicle connectivity. Services subject to change at any time without notice. The Wi-Fi Connect trial begins at the time of enrollment and expires the earlier of 3GB data use or the 1-month trial period ends. Paid subscription required after trial. Select models include Integrated Streaming capability, which requires a separate subscription to third-party provider services. Data charges may apply. Valid in the contiguous U.S. and Alaska. Go to <https://myvehicle.att.com/#/toyota/learn?language=en&country=US> for terms and conditions. The Wi-Fi Connect trial begins at the time of enrollment and expires when 30 days or the earlier of 3GB of data is used or the 1-month period ends. Subscription required after trial. Integrated Streaming requires separate subscriptions to third-party provider services. Terms of Use apply. 11. Apple Music and the Apple logo are trademarks of Apple Inc., registered in the U.S. and other countries. Requires Wi-Fi Connect subscription after trial (if applicable) and your own Apple Music account. 12. Amazon, Amazon Music, and related marks are trademarks of Amazon.com, Inc., or its affiliates. 13. Drive Connect availability and accuracy depend on certain factors outside of Toyota's control in order to operate, including 4G network availability, a cellular connection and GPS signal. Without any one or more of these things, operability may be limited or precluded. Services subject to change at any time without notice. Requires app download/registration and subscription after trial (if applicable). Terms of Use apply. Data charges may apply. See *Owner's Manual* and <https://www.toyota.com/connected-services/> for limitations. To learn about Toyota's Connected Services data collection, use, sharing and retention practices, visit <https://www.toyota.com/support/privacy-notice/>. Trial period begins on original purchase or lease date of new vehicle. Paid subscription required after trial (if applicable). Terms of Use apply. 14. Destination Assist requires a trial or subscription to Drive Connect. Drive Connect availability and accuracy depend on certain factors outside of Toyota's control in order to operate, including 4G network availability, a cellular connection and GPS signal. Without any one or more of these things, operability may be limited or precluded. Services subject to change at any time without notice. Requires app download/registration and subscription after trial (if applicable). Terms of Use apply. Data charges may apply. See *Owner's Manual* and <https://www.toyota.com/connected-services/> for limitations. To learn about Toyota's Connected Services data collection, use, sharing and retention practices, visit <https://www.toyota.com/support/privacy-notice/>. The Destination Assist trial period begins on original purchase or lease date of new vehicle. Paid subscription required after trial (if applicable). Terms of Use apply. 15. Intelligent Assistant requires a trial or subscription to Drive Connect. Drive Connect availability and accuracy depend on certain factors outside of Toyota's control in order to operate, including 4G network availability, a cellular connection and GPS signal. Without any one or more of these things, operability may be limited or precluded. Services subject to change at any time without notice. Requires app download/registration and subscription after trial (if applicable). Terms of Use apply. Data charges may apply. See *Owner's Manual* and <https://www.toyota.com/connected-services/> for limitations. To learn about Toyota's Connected Services data collection, use, sharing and retention practices, visit <https://www.toyota.com/support/privacy-notice/>. 16. Cloud Navigation requires a trial or subscription to Drive Connect. Drive Connect availability and accuracy depend on certain factors outside of Toyota's control in order to operate, including 4G network availability, a cellular connection and GPS signal. Without any one or more of these things, operability may be limited or precluded. Services subject to change at any time without notice. Requires app download/registration and subscription after trial (if applicable). Terms of Use apply. Data charges may apply. See *Owner's Manual* and <https://www.toyota.com/connected-services/> for limitations. To learn about Toyota's Connected Services data collection, use, sharing and retention practices, visit <https://www.toyota.com/support/privacy-notice/>. 17. Use only if aware of circumstances surrounding vehicle it is legal safe to do so (e.g., do not remotely start a gas engine vehicle in an enclosed space or if vehicle is occupied by a child). Remote Connect depends on certain factors outside of Toyota's control in order to operate, including cellular network availability and GPS signal. Without either of these things, operability may be limited or precluded. Services subject to change at any time without notice. Bluetooth® connectivity is required if your subscription includes Digital Key capability. Remote start/stop only available on select models. See your Toyota dealer for details. Terms of Use apply. Data charges may apply. See *Owner's Manual* and <https://www.toyota.com/connected-services/>. To learn about Toyota's Connected Services' data collection, use, sharing and retention practices, please visit <https://www.toyota.com/support/privacy-notice/>. Trial period begins on original purchase or lease date of new vehicle. Paid subscription required after trial (if applicable). Terms of Use apply. 18. JBL® is a registered trademark of Harman International Industries, Inc. 19. Google, Android, Android Auto, YouTube Music and other marks are trademarks of Google LLC. 20. To wirelessly use Android Auto on your car display, you need a compatible Android smartphone with an active data plan. You can check which smartphones are compatible at [g.co/androidauto/requirements](http://g.co/androidauto/requirements). Operability depends on network availability, a cellular connection and GPS signal. Services subject to change at any time without notice. Data charges may apply. To learn more, go to <https://www.toyota.com/audio-multimedia/>. To learn more about Toyota's Connected Services data collection, use, sharing and retention practices, please visit <https://www.toyota.com/support/privacy-notice/>. 21. Apps and services are subject to change at any time without notice. Data charges may apply. Apple CarPlay® functionality requires a compatible iPhone® connected wirelessly to the vehicle. Apple CarPlay® is a registered trademark of Apple Inc. 22. iPhone® is a registered trademark of Apple Inc. All rights reserved. 23. Trial length and service availability may vary by model, model year or trim. Service will automatically stop at the end of your trial subscription period unless you decide to continue service. If you do not wish to enjoy your trial, you can cancel by calling the number below. All SiriusXM services require a subscription, each sold separately by SiriusXM after the trial period. **Service subject to the SiriusXM Customer Agreement and Privacy Policy; visit [www.siriusxm.com](http://www.siriusxm.com) to see complete terms and how to cancel which includes calling 1-866-635-2349.** Some services and features are subject to device capabilities and location availability. All fees, content and features are subject to change. SiriusXM, Pandora and all related logos are trademarks of Sirius XM Radio Inc. and its respective subsidiaries. 24. Toyota Safety Sense™ effectiveness is dependent on many factors including road, weather and vehicle conditions. Drivers are responsible for their own safe driving. Always pay attention to your surroundings and drive safely. See *Owner's Manual* for limitations. 25. The Pre-Collision System (PCS) with Pedestrian Detection (PD) is designed to determine if impact is imminent and help reduce impact speed and damage in certain frontal collisions involving a vehicle, a pedestrian or a bicyclist. PCS w/PD is not a substitute for safe and attentive driving. System effectiveness depends on many factors, such as speed, size and position of pedestrian or bicyclist and weather, light and road conditions. See *Owner's Manual* for limitations. 26. Full-Speed Range Dynamic Radar Cruise Control is not a substitute for safe and attentive driving. See *Owner's Manual* for instructions and limitations. 27. Lane Departure Alert with Steering Assist is designed to read visible lane markers under certain conditions. It provides a visual/audible alert and slight steering force when lane departure is detected. It is not a collision-avoidance system or a substitute for safe and attentive driving. Effectiveness depends on many factors including road, weather and vehicle conditions. See *Owner's Manual* for limitations. 28. Automatic High Beams operate at speeds above 21 mph. See *Owner's Manual* for instruction and limitations. 29. The Lane Tracing Assist (LTA) lane centering function is designed to read visible lane markers and detect other vehicles under certain conditions. It is only operational when DRCC is engaged. Not available on vehicles with manual transmissions. See *Owner's Manual* for limitations. 30. Road Sign Assist only recognizes certain road signs. See *Owner's Manual* for limitations. 31. Do not rely exclusively on Blind Spot Monitor. Look over shoulder and use turn signal. See *Owner's Manual* for limitations. 32. May not be compatible with all mobile phones, smart devices, tablets, e-readers, MP3/WMA players and like models. 33. Rated for 12 volts/10 amps. See *Owner's Manual* for additional limitations and details. 34. Airbag systems supplement the seatbelts and are designed to inflate only under certain conditions and in certain types of severe collisions. Always wear seatbelt, sit upright in middle and as far back in seat as possible to help decrease risk of injury. Do not put objects in front of an airbag. See *Owner's Manual* for limitations. 35. The Rear-Seat Reminder does not sense objects in the rear seat. The Rear-Seat Reminder is designed to recognize a unique rear-door opening pattern that may be consistent with an object being placed in the rear seating area. See *Owner's Manual* for additional details. 36. Do not rely exclusively on the Rear Cross-Traffic Alert. Visually confirm clearance during use. See *Owner's Manual* for limitations. 37. Do not overload vehicle and properly secure roof load. See *Owner's Manual* for weight limits and restrictions. 38. HomeLink® and the HomeLink® house icon are registered trademarks of Gentex Corporation. 39. SofTex® is a registered trademark of Toyota Motor Sales, U.S.A., Inc. 40. Do not exceed 120V. See *Owner's Manual* for additional limitations and details. 41. The Panoramic View Monitor does not provide a comprehensive view of the area surrounding your vehicle. Look around to confirm clearance. See *Owner's Manual* for limitations. 42. The Adaptive Front-Lighting System helps improve night vision. Situations such as a dirty windshield, rapidly changing light conditions or hilly terrain may limit effectiveness, requiring the driver to manually turn off the system. See *Owner's Manual* for additional limitations and details. 43. Rated for 1500 watts shared between both outlets. See *Owner's Manual* for additional limitations and details. 44. Extra-cost color. 45. Dashcam may not record under certain conditions. Use in accordance with applicable laws. See dashcam

## DISCLOSURES

*Owner's Manual* for details. **46.** This floor mat/floor liner was designed specifically for use in your model and model year vehicle and SHOULD NOT be used in any other vehicle. To avoid potential interference with pedal operation, each mat/liner must be secured with its fasteners. Do not install a floor mat/floor liner on top of an existing floor mat/floor liner. **47.** Toyota strives to build vehicles to match customer interest and thus they typically are built with popular options and option packages. Not all options/packages are available separately and some may not be available in all regions of the country. See [toyota.com](http://toyota.com) for information about options/packages commonly available in your area. If you would prefer a vehicle without any or with different options, contact your dealer to check for current availability or the possibility of placing a special order. Color(s) depicted may vary based on multiple factors, including ambient lighting and the format in which it is being viewed (e.g., computer, mobile device or print). **48.** The backup camera does not provide a comprehensive view. Always look over shoulder and use outside mirrors. See *Owner's Manual* for limitations. **49.** A compatible Bluetooth®-enabled phone must first be paired. Phone performance depends on software, coverage and carrier. The Bluetooth® word mark and logos are registered trademarks of Bluetooth SIG, Inc. Use of such marks by Toyota is under license. **50.** Be sure to obey traffic regulations and maintain awareness of road and traffic conditions at all times. System functionality and accuracy of information depends on many factors. Use common sense when relying on information provided. Services and programming subject to change. Updates may be at an additional cost. See *Owner's Manual* for limitations. **51.** An active Remote Connect trial or subscription is required to use the features mentioned in the Toyota app. **52.** Vehicle Stability Control is not a substitute for safe and attentive driving practices. Factors including speed, road conditions, weather and steering input can affect whether VSC will be effective. See *Owner's Manual* for limitations. **53.** Brake Assist is designed to help the driver take advantage of ABS and is not a substitute for safe driving practices. Braking effectiveness also depends on proper vehicle maintenance, tire and road conditions. See *Owner's Manual* for additional limitations and details. **54.** Smart Stop Technology® will reduce power to help the brakes bring vehicle to a stop during certain contemporaneous brake and accelerator pedal applications. See *Owner's Manual* for limitations. **55.** Vehicle Dynamics Integrated Management (VDIM) is an electronic system designed to help the driver maintain vehicle control under adverse conditions. It is not a substitute for safe and attentive driving practices. Factors including speed, road conditions, weather and driver steering input can all affect whether VDIM will be effective in preventing a loss of control. See *Owner's Manual* for additional limitations and details. **56.** Downhill Assist Control is designed to help driver maintain vehicle control and speed on steep, downhill descents and is not a substitute for safe driving judgment and practices. Factors including speed, grade, surface conditions and driver input can affect the DAC's ability to prevent loss of control. See *Owner's Manual* for additional limitations and details. **57.** The engine immobilizer is a state-of-the-art anti-theft system initiated when the key is inserted into ignition switch or a Smart Key fob is in/near the vehicle. Engine will only start if the code in the transponder chip inside the key/fob matches the code in vehicle's immobilizer. The transponder chip is embedded in the key/fob and can be costly to replace. For lost key or fob, see a Toyota dealer or go to [www.aloa.org](http://www.aloa.org) to find a qualified locksmith for high-security key service. **58.** The Tire Pressure Monitor System alerts the driver when tire pressure is critically low. For optimal tire wear and performance, tire pressure should be checked regularly with a gauge; do not rely solely on the monitor system. See *Owner's Manual* for limitations and details. **59.** Hill Start Assist Control is designed to minimize backward rolling on steep ascents. Not a substitute for safe driving judgment and practices. Speed, grade, surface conditions, driver input, etc., can all affect HAC function. See *Owner's Manual*. **60.** Front and Rear Parking Assist with Automatic Braking (PA w/AB) may warn drivers of, and potentially brake for front and rear collisions with certain objects when traveling at low speeds. Drivers should visually confirm clearance during use. See *Owner's Manual* for instructions and limitations. **61.** Predictive Fuel-Efficient Drive systems require a destination entry in the navigation system for use. See *Owner's Manual* for details. **62.** Before towing, confirm Stop and Start Engine System is disengaged (V6 gas models only). **63.** Meets Tier-2/ Bin-3 Federal emissions standard. **64.** Cargo and load capacity limited by weight and distribution. Always properly secure cargo and cargo area. **65.** Trailer-Sway Control (TSC) is an electronic system designed to help the driver maintain vehicle control under adverse conditions. It is not a substitute for safe driving practices. Factors including speed, road conditions, weather and driver steering input can all affect whether TSC will be effective in preventing a loss of control. See *Owner's Manual* for additional limitations and details.

Toyota strives to build vehicles to match customer interest and thus they typically are built with popular options and option packages. Not all options/packages are available separately and some may not be available in all regions of the country. See [toyota.com](http://toyota.com) for information about options/packages commonly available in your area. If you would prefer a vehicle without any or with different options, contact your dealer to check for current availability or the possibility of placing a special order.

Color(s) depicted may vary based on multiple factors, including ambient lighting and the format in which it is being viewed (e.g., computer, mobile device or print).

Toyota Highlander is designed to meet most off-road driving requirements. Abusive use may result in bodily harm or damage. Toyota encourages responsible operation to protect you, your vehicle and the environment. Seatbelts should be worn at all times. Please do not allow passengers to ride in the cargo area. Towing hitch receivers/ball mount kits are not intended to provide crash protection.

For details on vehicle specifications, standard features and available equipment in your area, contact your Toyota dealer. A vehicle with particular equipment may not be available at the dealership. Ask your Toyota dealer to help locate a specifically equipped vehicle.

All information presented herein is based on data available at the time of posting, is subject to change without notice and pertains specifically to mainland U.S.A. vehicles only. Vehicles shown may be prototypes, shown using visual effects and/or shown with options. Actual models may vary.



**Mobility**

For Toyota Mobility program details, go to [www.toyota.com/mobility](http://www.toyota.com/mobility) or call the Toyota Brand Engagement Center at 1-800-331-4331