



**TOYOTA**

2024 RAV4

2024 RAV4

# Rule every adventure.

Make every drive count in the 2024 Toyota RAV4. With its versatile design and powertrain choices, you'll be prepared for whatever the day brings. From camping by the lake to running errands around town, RAV4 is ready to maximize sport with utility. So jump in to explore your next favorite destination with a drive that feels as good as it looks.



TRD Off-Road shown in Ice Cap with available Advanced Technology Package and accessory roof rack cross rails. Top: Hybrid XSE shown in Cavalry Blue with Midnight Black Metallic roof and available Advanced Technology Package. Off-roading is inherently dangerous. Abusive use may result in personal injury or vehicle damage.





*HYBRID*

# Explore the long roads.

RAV4 Hybrid's standard All-Wheel Drive (AWD) provides all-weather capability and confident on-road driving dynamics. Add up to 219 net combined horsepower and up to an EPA-estimated 39 mpg combined rating,<sup>1</sup> and be ready for the trip ahead.

Up to  
**39**  
EPA-est. mpg<sup>1</sup>



Hybrid XSE shown in Cavalry Blue with Midnight Black Metallic roof and available Advanced Technology Package and panoramic glass roof. Top: Hybrid XSE interior shown in Black/Blue with available panoramic glass roof and Premium Audio with Dynamic Navigation<sup>2</sup> and JBL<sup>3</sup>

See numbered footnotes in Disclosures section.



RAV4 Prime XSE shown in Supersonic Red with Midnight Black Metallic roof (extra-cost color).

PRIME

# Primed for adventure.

RAV4 Prime is a force on the road, with 302 net combined horsepower, making it our quickest, most powerful RAV4 yet. And with standard AWD, inclement weather won't disrupt an adventurous day.

# 94

EPA-est. MPGe<sup>4</sup>



## Plug-in hybrid efficiency

RAV4 Prime has an EPA-estimated 42-mile EV-only driving range rating when fully charged.<sup>5</sup> Add the ability to seamlessly switch between its hybrid mode and EV Mode, which has an EPA-estimated combined 94 MPGe,<sup>4</sup> and experience versatility in every drive.

PERFORMANCE

# Powered by efficiency.



Hybrid XSE shown in Cavalry Blue with Midnight Black Metallic roof and available Advanced Technology Package. Middle: TRD Off-Road shown in Ice Cap with available Advanced Technology Package. Bottom: RAV Prime XSE shown in Supersonic Red with Midnight Black Metallic roof (extra-cost color).

## Hybrid powertrain with 219 net horsepower

RAV4 Hybrid's dual electric motors and an Electronically controlled Continuously Variable Transmission (ECVT) work together to provide impressive acceleration and enhanced fuel efficiency on every trip.



Off-roading is inherently dangerous. Abusive use may result in personal injury or vehicle damage.

## Dynamic Torque Vectoring All-Wheel Drive (TV-AWD)

Available on gas models, this AWD system helps enhance responsiveness and stability by sending up to 50 percent of the power to the rear wheels and then further distributing that power to the side that has more traction.



## Plug-in performance

With a 5.7-second 0-60 time<sup>6</sup>, the power of RAV4 Prime will get you going fast. The advanced gas/electric powertrain delivers the power you need while still delivering a smooth, comfortable ride.

See numbered footnotes in Disclosures section.

AUDIO MULTIMEDIA

# Sound that speaks to you.

Enhance every drive with a crowd-pleasing experience. Whether enjoying the sounds of your favorite soundtrack or interacting with an interface that you're familiar with, you'll always be surrounded by comfort.



## Wireless Apple CarPlay®

Bring along familiar functionality. With RAV4's wireless Apple CarPlay<sup>®7</sup> compatibility, you can use your compatible iPhone<sup>®8</sup> with the multimedia system to get directions, make calls, send and receive messages and listen to music, all while staying focused behind the wheel.



## Wireless Android Auto™

Stay connected on the road. By wirelessly pairing your compatible Android<sup>™9</sup> phone with the audio multimedia system, Android Auto<sup>™10</sup> lets you get real-time traffic alerts, make and receive phone calls, listen to your favorite soundtrack and more.



## JBL® Premium Audio system

Immerse yourself in quality sound with RAV4's available JBL® Premium Audio system<sup>3</sup>. An 11-speaker, 800-watt audio system equipped with a subwoofer, it provides phenomenal sound that amplifies every drive.



## SiriusXM® Platinum Plan 3-month trial

With the SiriusXM® Platinum Plan 3-month trial,<sup>11</sup> you get 425+ channels, including 165+ channels in your vehicle, to listen to ad-free music, plus sports, news, comedy and more. Innovative features in RAV4 make it even easier to search, discover and listen than ever before, through personalized channel recommendations curated just "For You." Plus, the Live Sports category puts all your games and teams in one place, for easy access.

Screen depictions accurate at time of posting. See numbered footnotes in Disclosures section.

# Technology that keeps up with you.

Take advantage of smarter and convenient technologies designed to simplify your everyday life.<sup>12</sup> Trial periods are available on select models for the listed Connected Services.\* 4G network dependent.



## Safety Connect®

Round-the-clock help when the unexpected happens!<sup>3</sup>

- ✓ Emergency Assistance Button (SOS)
- ✓ Enhanced Roadside Assistance<sup>14</sup>
- ✓ Automatic Collision Notification
- ✓ Stolen Vehicle Locator<sup>15</sup>



## Service Connect

Being proactive to help keep your vehicle in peak condition!<sup>16</sup>

- ✓ Vehicle Health Report
- ✓ Vehicle Maintenance Alert
- ✓ Maintenance Reminder



## Wi-Fi Connect

Turn your Toyota into a hotspot with 4G connectivity!<sup>17</sup>

- ✓ AT&T Hotspot
- ✓ Integrated Streaming for Apple Music®<sup>18</sup> subscribers
- ✓ Integrated Streaming for Amazon Music<sup>19</sup> subscribers



## Drive Connect

Enhanced features to get you where you need to be.<sup>20</sup>

- ✓ Destination Assist<sup>21</sup>
- ✓ Intelligent Assistant<sup>22</sup>
- ✓ Cloud Navigation<sup>23</sup>



## Remote Connect

Manage your vehicle, including remote start and much more.<sup>24</sup>

- ✓ Remote Vehicle Start
- ✓ Unlock/Lock
- ✓ Remote Notifications
- ✓ Charge Management
- ✓ Guest Driver
- ✓ Smartwatch Compatibility

\*To view included trial details, please visit [toyota.com/connected-services](http://toyota.com/connected-services).



TOYOTA SAFETY SENSE™ (TSS 2.5)

# Peace of mind comes standard.

The RAV4 lineup includes the Toyota Safety Sense™ 2.5 (TSS 2.5)<sup>25</sup> or 2.5+ (TSS 2.5+)\*,<sup>25</sup> bundle of active safety and driver assistance technologies. These innovative features work together to give you added confidence for the road ahead.



Pre-Collision System with Pedestrian Detection<sup>26</sup>



Full-Speed Range Dynamic Radar Cruise Control<sup>27</sup>



Lane Departure Alert with Steering Assist<sup>28</sup>



Automatic High Beams<sup>29</sup>



Lane Tracing Assist<sup>30</sup>



Road Sign Assist<sup>31</sup>

\*Feature availability may vary by model grade. RAV4 Prime models include Toyota Safety Sense™ 2.5+ (TSS 2.5+). For more information, visit [toyota.com/safety-sense](https://toyota.com/safety-sense). See numbered footnotes in Disclosures section.



## RAV4 MODELS



### LE

Includes these key features

#### Mechanical/Performance

- ✓ 2.5L 4-Cylinder engine with 203 hp
- ✓ Direct Shift 8-speed Automatic Transmission
- ✓ Normal, Eco and Sport drive modes
- ✓ Front-Wheel Drive (FWD)
- ✓ Available All-Wheel Drive (AWD) with Multi-Terrain Select (MTS)
- ✓ Up to 27 city/34 highway/30 combined EPA-est. mpg<sup>1</sup>

#### Exterior Features

- ✓ LED projector headlights with DRL function and chrome accents
- ✓ LED taillights and stop lights
- ✓ Black hexagon-patterned bar front grille
- ✓ Power outside mirrors with folding feature
- ✓ Dual chrome exhaust tips
- ✓ 17-in. steel wheels with silver 6-spoke wheel covers

#### Interior Features

- ✓ Seating for five
- ✓ Climate control system with rear seat vents
- ✓ Fabric-trimmed seats
  - 6-way adjustable front driver's seat
  - 4-way adjustable front passenger seat
  - 60/40 split reclining fold-flat rear seat
- ✓ 7-in digital Multi-Information Display (MID)
- ✓ Three USB media ports<sup>32</sup>

#### Audio Multimedia

- ✓ 8-in. Toyota Audio Multimedia:
  - 8-in. touchscreen
  - Wireless Apple CarPlay<sup>®7</sup> compatible
  - Wireless Android Auto<sup>™10</sup> compatible
  - SiriusXM<sup>®</sup> 3-month Platinum Plan trial subscription<sup>11</sup>

#### Connected Services<sup>12</sup> Trials 4G network dependent

- ✓ Wi-Fi Connect 30-day/3-GB trial<sup>17</sup>
- ✓ Service Connect up to 10-year trial<sup>16</sup>
- ✓ Remote Connect-capable<sup>24</sup>
- ✓ Safety Connect<sup>®</sup> up to 10-year trial<sup>13</sup>
- ✓ Drive Connect-capable<sup>20</sup>

#### Safety Features

- ✓ Toyota Safety Sense<sup>™</sup> 2.5 (TSS 2.5)<sup>25</sup>
- ✓ Star Safety System<sup>™</sup>
- ✓ Eight airbags<sup>33</sup>

#### Options and Packages

- ✓ Blind Spot Monitor (BSM)<sup>34</sup> with Rear Cross-Traffic Alert (RCTA)<sup>35</sup>
- ✓ Rear cargo area cover



### XLE

Adds to or replaces features offered on LE

#### Mechanical/Performance

- ✓ Available All-Wheel Drive (AWD) with Multi-Terrain Select (MTS)
- ✓ Up to 28 city/35 highway/30 combined EPA-est. mpg<sup>1</sup>

#### Exterior Features

- ✓ Color-keyed heated power outside mirrors with turn signal and blind spot warning<sup>34</sup> indicators, and folding feature
- ✓ 17-in. 5-spoke light gray metallic alloy wheels

#### Interior Features

- ✓ Dual zone automatic climate control with rear-seat vents
- ✓ Fabric-trimmed seats with embossed polygon-design seat inserts
  - 8-way power-adjustable driver's seat with lumbar support
- ✓ Smart Key System on front doors and liftgate<sup>36</sup> with Push Button Start
- ✓ One USB media port<sup>32</sup> and four USB charge ports<sup>32</sup>
- ✓ Rear cargo area cover

#### Audio Multimedia

- ✓ 8-in. Toyota Audio Multimedia:
  - 8-in. touchscreen
  - Wireless Apple CarPlay<sup>®7</sup> compatible
  - Wireless Android Auto<sup>™10</sup> compatible
  - SiriusXM<sup>®</sup> 3-month Platinum Plan trial subscription<sup>11</sup>

#### Connected Services<sup>12</sup> Trials 4G network dependent

- ✓ Wi-Fi Connect 30-day/3-GB trial<sup>17</sup>
- ✓ Service Connect up to 10-year trial<sup>16</sup>
- ✓ Remote Connect 1-year trial<sup>24</sup>
- ✓ Safety Connect<sup>®</sup> up to 10-year trial<sup>13</sup>
- ✓ Drive Connect-capable<sup>20</sup>

#### Safety Features

- ✓ Toyota Safety Sense<sup>™</sup> 2.5 (TSS 2.5)<sup>25</sup>
- ✓ Star Safety System<sup>™</sup>
- ✓ Eight airbags<sup>33</sup>
- ✓ Blind Spot Monitor (BSM)<sup>34</sup> with Rear Cross-Traffic Alert (RCTA)<sup>35</sup>

#### Options and Packages

- ✓ XLE Weather Package includes:
  - Heated leather-trimmed steering wheel
  - Heated front seats
  - Rain-sensing variable intermittent windshield wipers with de-icer function
- ✓ XLE Convenience Package includes:
  - Height-adjustable power liftgate<sup>36</sup> with jam protection
  - Power tilt/slide moonroof with one-touch open/close



### XLE Premium

Adds to or replaces features offered on XLE

#### Mechanical/Performance

- ✓ Available All-Wheel Drive (AWD) with Multi-Terrain Select (MTS)
- ✓ Up to 28 city/35 highway/30 combined EPA-est. mpg<sup>1</sup>

#### Exterior Features

- ✓ Integrated LED fog lights
- ✓ Power tilt/slide moonroof with one-touch open/close
- ✓ Power liftgate<sup>36</sup> with jam protection
- ✓ 19-in. multi-spoke metallic-finished alloy wheels

#### Interior Features

- ✓ SofTex<sup>®</sup>-trimmed<sup>37</sup> seats
  - 8-way power-adjustable driver's seat with lumbar support
- ✓ Leather-trimmed steering wheel
- ✓ Dual zone automatic climate control system, front center-vent flow controls and rear-seat vents

#### Audio Multimedia

- ✓ 8-in. Toyota Audio Multimedia:
  - 8-in. touchscreen
  - Wireless Apple CarPlay<sup>®7</sup> compatible
  - Wireless Android Auto<sup>™10</sup> compatible
  - SiriusXM<sup>®</sup> 3-month Platinum Plan trial subscription<sup>11</sup>

#### Connected Services<sup>12</sup> Trials 4G network dependent

- ✓ Wi-Fi Connect up to 30-day/3-GB trial<sup>17</sup>
- ✓ Service Connect up to 10-year trial<sup>16</sup>
- ✓ Remote Connect 1-year trial<sup>24</sup>
- ✓ Safety Connect<sup>®</sup> up to 10-year trial<sup>13</sup>
- ✓ Drive Connect-capable<sup>20</sup>

#### Safety Features

- ✓ Toyota Safety Sense<sup>™</sup> 2.5 (TSS 2.5)<sup>25</sup>
- ✓ Star Safety System<sup>™</sup>
- ✓ Eight airbags<sup>33</sup>
- ✓ Blind Spot Monitor (BSM)<sup>34</sup> with Rear Cross-Traffic Alert (RCTA)<sup>35</sup>

#### Options and Packages

- ✓ XLE Premium Grade Weather Package includes:
  - Heated leather-trimmed steering wheel
  - Heated front seats
  - 8-way power-adjustable driver's seat with two-position memory function and lumbar support
  - Rain-sensing variable intermittent windshield wipers with de-icer function
- ✓ XLE Premium Grade Advanced Technology Package
  - Front and Rear Parking Assist with Automatic Braking (PA w/AB)<sup>38</sup>
  - Qi-compatible wireless smartphone charging<sup>39</sup>
- ✓ 10.5-in. Toyota Audio Multimedia:
  - 10.5-in. touchscreen
  - Wireless Apple CarPlay<sup>®7</sup>
  - Wireless Android Auto<sup>™10</sup>
  - SiriusXM<sup>®</sup> 3-month Platinum trial subscription<sup>11</sup>
- ✓ 11-speaker JBL<sup>®3</sup> Premium Audio including subwoofer and amplifier
- ✓ Digital rearview mirror with HomeLink<sup>®40</sup> universal transceiver

## RAV4 MODELS



### Adventure

Adds to or replaces features offered on XLE

#### Mechanical/Performance

- ✓ Dynamic Torque Vectoring All-Wheel Drive (TV-AWD) with Rear Driveline Disconnect
- ✓ Multi-Terrain Select (MTS) (MUD & SAND, ROCK & DIRT, and SNOW modes)
- ✓ 3500-lb. towing capacity<sup>41</sup>
- ✓ 25 city/33 highway/28 combined EPA-est. mpg<sup>1</sup>

#### Exterior Features

- ✓ Unique split-bar front upper grille
- ✓ Active grille shutters
- ✓ Larger black overfenders
- ✓ Unique raised black roof rails
- ✓ Black RAV4 and Adventure badging with matte-black accents
- ✓ 19-in. split 5-spoke alloy wheels with matte black accents

#### Interior Features

- ✓ SofTex®-trimmed<sup>37</sup> seats with orange accents and stitching
- ✓ Orange-accented interior, including stitching on dash, doors and seats
- ✓ One 120V/100W AC power outlet in cargo area<sup>42</sup>

#### Audio Multimedia

- ✓ 8-in. Toyota Audio Multimedia:
  - 8-in. touchscreen
  - Wireless Apple CarPlay<sup>®7</sup> compatible
  - Wireless Android Auto<sup>™10</sup> compatible
  - SiriusXM<sup>®</sup> 3-month Platinum Plan trial subscription<sup>11</sup>

#### Connected Services<sup>12</sup> Trials

##### 4G network dependent

- ✓ Wi-Fi Connect 30-day/3-GB trial<sup>17</sup>
- ✓ Service Connect up to 10-year trial<sup>16</sup>
- ✓ Remote Connect 1-year trial<sup>24</sup>
- ✓ Safety Connect<sup>®</sup> up to 10-year trial<sup>13</sup>
- ✓ Drive Connect-capable<sup>20</sup>

#### Safety Features

- ✓ Toyota Safety Sense<sup>™</sup> 2.5 (TSS 2.5)<sup>25</sup>
- ✓ Star Safety System<sup>™</sup>
- ✓ Eight airbags<sup>33</sup>
- ✓ Blind Spot Monitor (BSM)<sup>34</sup> with Rear Cross-Traffic Alert (RCTA)<sup>35</sup>

#### Options and Packages

- ✓ Adventure Weather Package includes:
  - Heated steering wheel
  - Heated front seats
  - Rain-sensing variable intermittent windshield wipers with de-icer function
- ✓ Adventure Grade Convenience Package includes:
  - Height-adjustable power liftgate<sup>36</sup> with jam protection
  - Power tilt/slide moonroof with one-touch open/close
- ✓ 10.5-in. Toyota Audio Multimedia:
  - 10.5-in. touchscreen
  - Wireless Apple CarPlay<sup>®7</sup>
  - Wireless Android Auto<sup>™10</sup>
  - SiriusXM<sup>®</sup> 3-month Platinum Plan trial subscription<sup>11</sup>
- ✓ 11-speaker JBL<sup>®3</sup> Premium Audio including subwoofer and amplifier
- ✓ Two-tone exterior color<sup>43</sup>



### TRD Off-Road

Adds to or replaces features offered on Adventure

#### Mechanical/Performance

- ✓ Dynamic Torque Vectoring All-Wheel Drive (TV-AWD) with Rear Driveline Disconnect
- ✓ Multi-Terrain Select (MTS) (MUD & SAND, ROCK & DIRT, and SNOW modes)
- ✓ TRD-tuned suspension
- ✓ 3500-lb. towing capacity<sup>41</sup>
- ✓ 25 city/32 highway/27 combined EPA-est. mpg<sup>1</sup>

#### Exterior Features

- ✓ Black rear bumper with metallic gray insert
- ✓ Power tilt/slid moonroof with one-touch open/close
- ✓ Power liftgate<sup>36</sup> with jam protection
- ✓ Black RAV4 and TRD Off-Road badging
- ✓ Red-painted coil springs
- ✓ TRD-stamped stainless steel front skid plate
- ✓ 18-in. 6-spoke matte-black TRD flow-formed alloy wheels
- ✓ Falken<sup>®44</sup> WILDPEAK All-Terrain tires

#### Interior Features

- ✓ SofTex®-trimmed<sup>37</sup> seats with red accents and stitching and TRD stitching in front headrests
- ✓ Red-accented interior, including red stitching on dash, doors and seat
- ✓ TRD all-weather floor mats<sup>45</sup> and cargo liner

#### Audio Multimedia

- ✓ 10.5-in. Toyota Audio Multimedia:
  - 10.5-in. touchscreen
  - Wireless Apple CarPlay<sup>®7</sup> compatible
  - Wireless Android Auto<sup>™10</sup> compatible
  - SiriusXM<sup>®</sup> 3-month Platinum Plan trial subscription<sup>11</sup>

#### Connected Services<sup>12</sup> Trials

##### 4G network dependent

- ✓ Wi-Fi Connect 30-day/3-GB trial<sup>17</sup>
- ✓ Service Connect up to 10-year trial<sup>16</sup>
- ✓ Remote Connect 1-year trial<sup>24</sup>
- ✓ Safety Connect<sup>®</sup> up to 10-year trial<sup>13</sup>
- ✓ Drive Connect 1-year trial<sup>20</sup>

#### Safety Features

- ✓ Toyota Safety Sense<sup>™</sup> 2.5 (TSS 2.5)<sup>25</sup>
- ✓ Star Safety System<sup>™</sup>
- ✓ Eight airbags<sup>33</sup>
- ✓ Blind Spot Monitor (BSM)<sup>34</sup> with Rear Cross-Traffic Alert (RCTA)<sup>35</sup>

#### Options and Packages

- ✓ TRD Off-Road Weather Package includes:
  - Heated steering wheel
  - Perforated heated and ventilated front seats
  - Rain-sensing variable intermittent windshield wipers with de-icer function
- ✓ TRD Off-Road Advanced Technology Package includes:
  - Front and Rear Parking Assist with Automatic Braking (PA w/AB)<sup>38</sup>
  - Qi-compatible wireless smartphone charging<sup>39</sup>
- ✓ 11-speaker JBL<sup>®3</sup> Premium Audio including subwoofer and amplifier
- ✓ Two-tone exterior color<sup>43</sup>
- ✓ Digital rearview mirror with HomeLink<sup>®40</sup> universal transceiver



### Limited

Adds to or replaces features offered on XLE Premium

#### Mechanical/Performance

- ✓ Available Dynamic Torque Vectoring All-Wheel Drive (TV-AWD) with Rear Driveline Disconnect
- ✓ Available Multi-Terrain Select (MTS) (MUD & SAND, ROCK & DIRT, and SNOW modes)
- ✓ Up to 27 city/35 highway/30 combined EPA-est. mpg<sup>1</sup>

#### Exterior Features

- ✓ LED projector headlights with LED DRL accent lights and turn signals
- ✓ Dark gray metallic-colored hexagon patterned front grille
- ✓ Chrome-accented color keyed outside door handles with front-row touch sensors
- ✓ Puddle lights

#### Interior Features

- ✓ SofTex®-trimmed<sup>37</sup> seats
  - Heated front seats
- ✓ Dark-brown-accented interior, including dark-brown stitching on dash, doors and seats
- ✓ Blue ambient interior lighting
- ✓ 12.3-in. digital Multi-Information Display (MID)

#### Audio Multimedia

- ✓ 10.5-in. Toyota Audio Multimedia:
  - 10.5-in. touchscreen
  - Wireless Apple CarPlay<sup>®7</sup> compatible
  - Wireless Android Auto<sup>™10</sup> compatible
  - SiriusXM<sup>®</sup> 3-month Platinum Plan trial subscription<sup>11</sup>
- ✓ 11-speaker JBL<sup>®3</sup> Premium Audio including subwoofer and amplifier

#### Connected Services<sup>12</sup> Trials

##### 4G network dependent

- ✓ Wi-Fi Connect 30-day/3-GB trial<sup>17</sup>
- ✓ Service Connect up to 10-year trial<sup>16</sup>
- ✓ Remote Connect 1-year trial<sup>24</sup>
- ✓ Safety Connect<sup>®</sup> up to 10-year trial<sup>13</sup>
- ✓ Drive Connect 1-year trial<sup>20</sup>

#### Safety Features

- ✓ Toyota Safety Sense<sup>™</sup> 2.5 (TSS 2.5)<sup>25</sup>
- ✓ Star Safety System<sup>™</sup>
- ✓ Eight airbags<sup>33</sup>
- ✓ Blind Spot Monitor (BSM)<sup>34</sup> with Rear Cross-Traffic Alert (RCTA)<sup>35</sup>
- ✓ Front and Rear Parking Assist with Automated Braking (PA w/AB)<sup>38</sup>

#### Options and Packages

- ✓ Limited Grade Weather Package includes:
  - Heated steering wheel
  - Perforated heated and ventilated front seats
  - Rear outboard passenger heated seating with perforated inserts
  - Rain-sensing variable intermittent windshield wipers with de-icer function
  - Panoramic View Monitor<sup>46</sup> with 360-degree Overhead View in low-speed drive and reverse, and Curb View
- ✓ Limited Grade Advanced Technology Package includes:
  - Smart Key System on all doors and liftgate<sup>36</sup>
  - Height-adjustable foot-activated power liftgate<sup>36</sup> with jam protection
  - Qi-compatible wireless smartphone charging<sup>39</sup>
- ✓ Panoramic glass roof with front power/tilt moonroof
- ✓ Digital rearview mirror with HomeLink<sup>®40</sup> universal transceiver

## RAV4 MODELS



### Hybrid LE

Adds to or replaces features offered on LE

#### Mechanical/Performance

- ✓ Hybrid engine: 2.5L 4-Cylinder with 219 net combined hp
- ✓ Electronically controlled Continuously Variable Transmission with sequential shift mode
- ✓ Electronic On-Demand All-Wheel Drive (AWD)
- ✓ Drive mode dial with Normal, Eco and Sport Drive modes
- ✓ TRAIL and EV Mode<sup>47</sup> select buttons
- ✓ 41 city/38 highway/39 combined EPA-est. mpg<sup>1</sup>

#### Exterior Features

- ✓ LED projector headlights with DRL function and chrome accents
- ✓ Active grille shutters
- ✓ 17-in. 5-spoke light gray metallic alloy wheels

#### Interior Features

- ✓ Dual zone automatic climate control system with rear-seat vents
- ✓ 7-in digital Multi-Information Display (MID) with hybrid power meter

#### Audio Multimedia

- ✓ 8-in. Toyota Audio Multimedia:
  - 8-in. touchscreen
  - Wireless Apple CarPlay<sup>®7</sup> compatible
  - Wireless Android Auto<sup>™10</sup> compatible
  - SiriusXM<sup>®</sup> 3-month Platinum Plan trial subscription<sup>11</sup>

#### Connected Services<sup>12</sup> Trials

##### 4G network dependent

- ✓ Wi-Fi Connect 30-day/3-GB trial<sup>17</sup>
- ✓ Service Connect up to 10-year trial<sup>16</sup>
- ✓ Remote Connect-capable<sup>24</sup>
- ✓ Safety Connect<sup>®</sup> up to 10-year trial<sup>13</sup>
- ✓ Drive Connect-capable<sup>20</sup>

#### Safety Features

- ✓ Toyota Safety Sense<sup>™</sup> 2.5 (TSS 2.5)<sup>25</sup>
- ✓ Star Safety System<sup>™</sup>
- ✓ Eight airbags<sup>33</sup>

#### Options and Packages

- ✓ Blind Spot Monitor (BSM)<sup>34</sup> with Rear Cross-Traffic Alert (RCTA)<sup>35</sup>
- ✓ Rear cargo area cover



### Hybrid XLE

Adds to or replaces features offered on Hybrid LE

#### Mechanical/Performance

- ✓ 41 city/38 highway/39 combined EPA-est. mpg<sup>1</sup>

#### Exterior Features

- ✓ Color-keyed outside door handles with front-row touch sensors
- ✓ Color-keyed heated power outside mirrors with turn signal and blind spot warning<sup>34</sup> indicators, and folding feature

#### Interior Features

- ✓ Dual zone automatic climate control with rear-seat vents
- ✓ Fabric-trimmed seats with embossed polygon-design seat inserts
  - 8-way power-adjustable driver's seat with lumbar support
- ✓ Smart Key System on front doors and liftgate<sup>36</sup> with Push Button Start
- ✓ One USB media port<sup>32</sup> and four USB charge ports<sup>32</sup>
- ✓ Rear cargo area cover

#### Audio Multimedia

- ✓ 8-in. Toyota Audio Multimedia:
  - 8-in. touchscreen
  - Wireless Apple CarPlay<sup>®7</sup> compatible
  - Wireless Android Auto<sup>™10</sup> compatible
  - SiriusXM<sup>®</sup> 3-month Platinum Plan trial subscription<sup>11</sup>

#### Connected Services<sup>12</sup> Trials

##### 4G network dependent

- ✓ Wi-Fi Connect 30-day/3-GB trial<sup>17</sup>
- ✓ Service Connect up to 10-year trial<sup>16</sup>
- ✓ Remote Connect 1-year trial<sup>24</sup>
- ✓ Safety Connect<sup>®</sup> up to 10-year trial<sup>13</sup>
- ✓ Drive Connect-capable<sup>20</sup>

#### Safety Features

- ✓ Toyota Safety Sense<sup>™</sup> 2.5 (TSS 2.5)<sup>25</sup>
- ✓ Star Safety System<sup>™</sup>
- ✓ Eight airbags<sup>33</sup>
- ✓ Blind Spot Monitor (BSM)<sup>34</sup> with Rear Cross-Traffic Alert (RCTA)<sup>35</sup>

#### Options and Packages

- ✓ XLE Weather Package includes:
  - Heated leather-trimmed steering wheel
  - Heated front seats
  - Rain-sensing variable intermittent windshield wipers with de-icer function
- ✓ XLE Convenience Package includes:
  - Height-adjustable power liftgate<sup>36</sup> with jam protection
  - Power tilt/slide moonroof with one-touch open/close



### Hybrid Woodland Edition

Adds to or replaces features offered on Hybrid LE

#### Mechanical/Performance

- ✓ 38 city/35 highway/37 combined EPA-est. mpg<sup>1</sup>
- ✓ TRD-tuned suspension

#### Exterior Features

- ✓ Integrated LED foglights
- ✓ 18-in. 6-spoke bronze-colored TRD flow-formed alloy wheels
- ✓ Falken<sup>®44</sup> WILDPEAK All-Terrain tires
- ✓ Black heated power outside mirrors with turn signal and blind spot warning<sup>34</sup> indicators, and folding feature
- ✓ Black outside door handles with touch-sensor lock/unlock feature on front doors
- ✓ Front and rear mudguards
- ✓ Black RAV4 badging and Woodland Edition decal
- ✓ Dual black chrome-tipped exhaust
- ✓ Unique raised black roof rails with cross bars
- ✓ Activity mount

#### Interior Features

- ✓ Dual zone automatic climate control with rear-seat vents
- ✓ Fabric-trimmed seats with embossed polygon-design seat inserts
  - 8-way power-adjustable driver's seat with lumbar support
- ✓ Smart Key System on front doors and liftgate<sup>36</sup> with Push Button Start
- ✓ One USB media port<sup>32</sup> and four USB charge ports<sup>32</sup>
- ✓ Woodland all-weather floor mats and cargo liner<sup>45</sup>
- ✓ Rear cargo area cover
- ✓ One 120V/100W AC power outlet in cargo area<sup>42</sup>

#### Audio Multimedia

- ✓ 8-in. Toyota Audio Multimedia:
  - 8-in. touchscreen
  - Wireless Apple CarPlay<sup>®7</sup> compatible
  - Wireless Android Auto<sup>™10</sup> compatible
  - SiriusXM<sup>®</sup> 3-month Platinum Plan trial subscription<sup>11</sup>

#### Connected Services<sup>12</sup> Trials

##### 4G network dependent

- ✓ Wi-Fi Connect 30-day/3-GB trial<sup>17</sup>
- ✓ Service Connect up to 10-year trial<sup>16</sup>
- ✓ Remote Connect 1-year trial<sup>24</sup>
- ✓ Safety Connect<sup>®</sup> up to 10-year trial<sup>13</sup>
- ✓ Drive Connect-capable<sup>20</sup>

#### Safety Features

- ✓ Toyota Safety Sense<sup>™</sup> 2.5 (TSS 2.5)<sup>25</sup>
- ✓ Star Safety System<sup>™</sup>
- ✓ Eight airbags<sup>33</sup>
- ✓ Blind Spot Monitor (BSM)<sup>34</sup> with Rear Cross-Traffic Alert (RCTA)<sup>35</sup>

#### Options and Packages

- ✓ Woodland Grade Weather Package includes:
  - Heated leather-trimmed steering wheel
  - Heated front seats
  - Rain-sensing variable intermittent windshield wipers with de-icer function

## RAV4 MODELS



### Hybrid XLE Premium

Adds to or replaces features offered on Hybrid XLE

#### Mechanical/Performance

- ✓ 41 city/38 highway/39 combined EPA-est. mpg<sup>1</sup>

#### Exterior Features

- ✓ Integrated LED fog lights
- ✓ Power tilt/slide moonroof with one-touch open/close
- ✓ Power liftgate<sup>36</sup> with jam protection
- ✓ 18-in. multi-spoke dark metallic-finished alloy wheels

#### Interior Features

- ✓ Integrated LED fog lights
- ✓ Dual zone automatic climate control system, front center-vent flow controls, and rear-seat vents
- ✓ SofTex<sup>®</sup>-trimmed<sup>37</sup> seats  
- 8-way power-adjustable driver's seat with lumbar support
- ✓ Leather-trimmed steering wheel

#### Audio Multimedia

- ✓ 8-in. Toyota Audio Multimedia:  
- 8-in. touchscreen  
- Wireless Apple CarPlay<sup>®7</sup> compatible  
- Wireless Android Auto<sup>™10</sup> compatible  
- SiriusXM<sup>®</sup> 3-month Platinum Plan trial subscription<sup>11</sup>

#### Connected Services<sup>12</sup> Trials

##### 4G network dependent

- ✓ Wi-Fi Connect 30-day/3-GB trial<sup>17</sup>
- ✓ Service Connect up to 10-year trial<sup>16</sup>
- ✓ Remote Connect 1-year trial<sup>24</sup>
- ✓ Safety Connect<sup>®</sup> up to 10-year trial<sup>13</sup>
- ✓ Drive Connect-capable<sup>20</sup>

#### Safety Features

- ✓ Toyota Safety Sense<sup>™</sup> 2.5 (TSS 2.5)<sup>25</sup>
- ✓ Star Safety System<sup>™</sup>
- ✓ Eight airbags<sup>33</sup>
- ✓ Blind Spot Monitor (BSM)<sup>34</sup> with Rear Cross-Traffic Alert (RCTA)<sup>35</sup>

#### Options and Packages

- ✓ XLE Premium Grade Weather Package includes:  
- Heated leather-trimmed steering wheel  
- Heated front seats  
- 8-way power-adjustable driver's seat with two-position memory function and lumbar support  
- Rain-sensing variable intermittent windshield wipers with de-icer function
- ✓ XLE Premium Hybrid Grade Advanced Technology Package includes:  
- Front and Rear Parking Assist with Automatic Braking (PA w/AB)<sup>38</sup>  
- Qi-compatible wireless smartphone charging<sup>39</sup>
- ✓ 10.5-in. Toyota Audio Multimedia:  
- 10.5-in. touchscreen  
- Wireless Apple CarPlay<sup>®7</sup>  
- Wireless Android Auto<sup>™10</sup>  
- SiriusXM<sup>®</sup> 3-month Platinum Plan trial subscription<sup>11</sup>
- ✓ 11-speaker JBL<sup>®3</sup> Premium Audio including subwoofer and amplifier
- ✓ Digital rearview mirror with HomeLink<sup>®40</sup> universal transceiver



### Hybrid SE

Adds to or replaces features offered on Hybrid XLE

#### Mechanical/Performance

- ✓ Sport-tuned suspension
- ✓ 41 city/38 highway/39 combined EPA-est. mpg<sup>1</sup>

#### Exterior Features

- ✓ Black hexagon-patterned front grille
- ✓ LED projector headlights with LED DRL accent lights and turn signals
- ✓ Black-painted lower front bumper, overfenders, outside mirrors, rocker panels, and rear bumper with metallic gray insert
- ✓ Power tilt/slide moonroof with one-touch open/close
- ✓ 18-in. multi-spoke black-painted alloy wheels

#### Interior Features

- ✓ Fabric-trimmed seats with sporty blue stitching
- ✓ Blue-accented interior including blue stitching on dash and seats
- ✓ Black headliner

#### Audio Multimedia

- ✓ 8-in. Toyota Audio Multimedia:  
- 8-in. touchscreen  
- Wireless Apple CarPlay<sup>®7</sup> compatible  
- Wireless Android Auto<sup>™10</sup> compatible  
- SiriusXM<sup>®</sup> 3-month Platinum Plan trial subscription<sup>11</sup>

#### Connected Services<sup>12</sup> Trials

##### 4G network dependent

- ✓ Wi-Fi Connect 30-day/3-GB trial<sup>17</sup>
- ✓ Service Connect up to 10 year trial<sup>16</sup>
- ✓ Remote Connect 1-year trial<sup>24</sup>
- ✓ Safety Connect<sup>®</sup> up to 10-year trial<sup>13</sup>
- ✓ Drive Connect-capable<sup>20</sup>

#### Safety Features

- ✓ Toyota Safety Sense<sup>™</sup> 2.5 (TSS 2.5)<sup>25</sup>
- ✓ Star Safety System<sup>™</sup>
- ✓ Eight airbags<sup>33</sup>
- ✓ Blind Spot Monitor (BSM)<sup>34</sup> with Rear Cross-Traffic Alert (RCTA)<sup>35</sup>

#### Options and Packages

- ✓ SE Grade Convenience Package includes:  
- Height-adjustable power liftgate<sup>36</sup> with jam protection  
- Power tilt/slide moonroof with one-touch open/close
- ✓ SE Grade Weather Package includes:  
- Heated steering wheel  
- Heated front seats  
- Rain-sensing variable intermittent windshield wipers with de-icer function



### Hybrid XSE

Adds to or replaces features offered on Hybrid SE

#### Mechanical/Performance

- ✓ Sport-tuned suspension
- ✓ 41 city/38 highway/39 combined EPA-est. mpg<sup>1</sup>

#### Exterior Features

- ✓ Vertical LED accent lighting
- ✓ Two-tone exterior color with Midnight Black Metallic roof<sup>43</sup>
- ✓ Power tilt/slide moonroof with one-touch open/close

#### Interior Features

- ✓ SofTex<sup>®</sup>-trimmed<sup>37</sup> seats with sporty blue stitching and fabric seat inserts  
- Heated front seats
- ✓ Blue ambient interior lighting

#### Audio Multimedia

- ✓ 10.5-in. Toyota Audio Multimedia:  
- 10.5-in. touchscreen  
- Wireless Apple CarPlay<sup>®7</sup> compatible  
- Wireless Android Auto<sup>™10</sup> compatible  
- SiriusXM<sup>®</sup> 3-month Platinum Plan trial subscription<sup>11</sup>

#### Connected Services<sup>12</sup> Trials

##### 4G network dependent

- ✓ Wi-Fi Connect 30-day/3-GB trial<sup>17</sup>
- ✓ Service Connect up to 10-year trial<sup>16</sup>
- ✓ Remote Connect 1-year trial<sup>24</sup>
- ✓ Safety Connect<sup>®</sup> up to 10-year trial<sup>13</sup>
- ✓ Drive Connect 1-year trial<sup>20</sup>

#### Safety Features

- ✓ Toyota Safety Sense<sup>™</sup> 2.5 (TSS 2.5)<sup>25</sup>
- ✓ Star Safety System<sup>™</sup>
- ✓ Eight airbags<sup>33</sup>
- ✓ Blind Spot Monitor (BSM)<sup>34</sup> with Rear Cross-Traffic Alert (RCTA)<sup>35</sup>

#### Options and Packages

- ✓ Panoramic glass roof with front power tilt/slide moonroof
- ✓ XSE Weather Package includes:  
- Heated steering wheel  
- Rain-sensing variable intermittent windshield wipers with de-icer function
- ✓ XSE Advanced Technology Package includes:  
- Power front driver's seat with two-position memory function  
- Front and Rear Parking Assist with Automatic Braking (PA w/AB)<sup>38</sup>  
- Smart Key System on all doors and liftgate  
- Height-adjustable foot-activated power liftgate<sup>36</sup> with jam protection  
- Panoramic View Monitor<sup>46</sup> with 360-degree Overhead View in low-speed drive and reverse, and Curb View  
- Qi-compatible wireless smartphone charging<sup>39</sup>
- ✓ 11-speaker JBL<sup>®3</sup> Premium Audio including subwoofer and amplifier
- ✓ Digital rearview mirror with HomeLink<sup>®40</sup> universal transceiver

## RAV4 MODELS



### Hybrid Limited

Adds to or replaces features offered on Hybrid XLE Premium

#### Mechanical/Performance

- ✓ 41 city/38 highway/39 combined EPA-est. mpg<sup>1</sup>

#### Exterior Features

- ✓ LED projector headlights with LED DRL accent lights and turn signals
- ✓ Dark gray metallic-colored hexagon patterned front grille
- ✓ Chrome-accented color keyed outside door handles with front-row touch sensors
- ✓ Puddle lights

#### Interior Features

- ✓ SofTex®-trimmed<sup>37</sup> seats
  - Heated front seats
- ✓ Dark-brown-accented interior, including dark-brown stitching on dash, doors and seats
- ✓ Blue ambient interior lighting
- ✓ 12.3-in. digital Multi-Information Display (MID) with hybrid power meter

#### Audio Multimedia

- ✓ 10.5-in. Toyota Audio Multimedia:
  - 10.5-in. touchscreen
  - Wireless Apple CarPlay<sup>®7</sup> compatible
  - Wireless Android Auto<sup>™10</sup> compatible
  - SiriusXM<sup>®</sup> 3-month Platinum Plan trial subscription<sup>11</sup>

#### Connected Services<sup>12</sup> Trials

##### 4G network dependent

- ✓ Wi-Fi Connect 30-day/3-GB trial<sup>17</sup>
- ✓ Service Connect up to 10-year trial<sup>16</sup>
- ✓ Remote Connect 1-year trial<sup>24</sup>
- ✓ Safety Connect<sup>®</sup> up to 10-year trial<sup>13</sup>
- ✓ Drive Connect 1-year trial<sup>20</sup>

#### Safety Features

- ✓ Toyota Safety Sense<sup>™</sup> 2.5 (TSS 2.5)<sup>25</sup>
- ✓ Star Safety System<sup>™</sup>
- ✓ Eight airbags<sup>33</sup>
- ✓ Blind Spot Monitor (BSM)<sup>34</sup> with Rear Cross-Traffic Alert (RCTA)<sup>35</sup>
- ✓ Front and Rear Parking Assist with Automatic Braking (PA w/AB)<sup>38</sup>

#### Options and Packages

- ✓ Limited Grade Weather Package includes:
  - Heated steering wheel
  - Perforated heated and ventilated front seats
  - Rear outboard passenger heated seating with perforated inserts
  - Rain-sensing variable intermittent windshield wipers with de-icer function
- ✓ Limited Grade Advanced Technology Package includes:
  - Smart Key System on all doors and liftgate<sup>36</sup>
  - Height-adjustable foot-activated power liftgate<sup>36</sup> with jam protection
  - Panoramic View Monitor<sup>46</sup> with 360-degree Overhead View in low-speed drive and reverse, and Curb View
  - Qi-compatible wireless smartphone charging<sup>39</sup>
- ✓ Panoramic glass roof with front power tilt/slide moonroof



### Prime SE

Adds to or replaces features offered on Hybrid XLE

#### Mechanical/Performance

- ✓ 2.5L 4-Cylinder Plug-in Hybrid system with 302 net hp
- ✓ Electronically-controlled Continuously Variable Transmission with sequential shift mode
- ✓ Electronic On-Demand All-Wheel Drive (AWD)
- ✓ Drive mode dial with SPORT, Eco and NORMAL modes, TRAIL mode, Auto EV/HV mode, and HV/EV Charge Hold
- ✓ 40 city/36 highway/38 combined EPA-est. mpg (hybrid mode)<sup>4</sup>
- ✓ 94 MPGe<sup>4</sup>
- ✓ 42-mile electric driving range<sup>5</sup>

#### Exterior Features

- ✓ LED projector headlights with LED DRL accent lights and turn signals
- ✓ Black diamond-patterned bar front grille
- ✓ Silver-painted front lower spoiler
- ✓ Black-painted lower front bumper, overfenders, rocker panels, and rear bumper with black insert
- ✓ Height-adjustable power liftgate<sup>36</sup> with jam protection
- ✓ 18-in. 5-spoke black-painted and machined sport alloy wheels

#### Interior Features

- ✓ Dual zone automatic climate control system with rear-seat vents
- ✓ Fabric-trimmed seats with sporty red stitching and embossed seat inserts
- ✓ Heated front seats
- ✓ 7-in. Multi-Information Display (MID) with hybrid system indicator
- ✓ Smart Key System on front doors and liftgate with Push Button Start
- ✓ Leather-trimmed steering wheel
- ✓ Red-accented interior, including red stitching on dash and seats
- ✓ Black headliner

#### Audio Multimedia

- ✓ 8-in. Toyota Audio Multimedia:
  - 8-in. touchscreen
  - Wireless Apple CarPlay<sup>®7</sup> compatible
  - Wireless Android Auto<sup>™10</sup> compatible
  - SiriusXM<sup>®</sup> 3-month Platinum Plan trial subscription<sup>11</sup>

#### Connected Services<sup>12</sup> Trials

##### 4G network dependent

- ✓ Wi-Fi Connect 30-day/3-GB trial<sup>17</sup>
- ✓ Service Connect up to 10-year trial<sup>16</sup>
- ✓ Remote Connect 1-year trial<sup>24</sup>
- ✓ Safety Connect<sup>®</sup> up to 10-year trial<sup>13</sup>
- ✓ Drive Connect-capable<sup>20</sup>

#### Safety Features

- ✓ Toyota Safety Sense<sup>™</sup> 2.5+ (TSS 2.5+)<sup>25</sup>
- ✓ Star Safety System<sup>™</sup>
- ✓ Eight airbags<sup>33</sup>
- ✓ Blind Spot Monitor (BSM)<sup>34</sup> with Rear Cross-Traffic Alert (RCTA)<sup>35</sup>

#### Options and Packages

- ✓ Prime SE Weather and Moonroof Package includes:
  - Heated leather-trimmed steering wheel
  - Rear outboard passenger heated seating
  - Rain-sensing variable intermittent windshield wipers with de-icer function
  - Power tilt/slide moonroof with one-touch open/close



### Prime XSE

Adds to or replaces features offered on Prime SE

#### Mechanical/Performance

- ✓ 40 city/36 highway/38 combined EPA-est. mpg (hybrid mode)<sup>4</sup>
- ✓ 94 MPGe<sup>4</sup>
- ✓ 42-mile electric driving range<sup>5</sup>

#### Exterior Features

- ✓ Vertical LED accent lights
- ✓ Black-painted outside mirrors
- ✓ Power tilt/slide moonroof with one-touch open/close
- ✓ 19-in. 5-spoke black-painted and machined sport alloy wheels

#### Interior Features

- ✓ SofTex®-trimmed<sup>37</sup> seats with sporty red stitching and fabric seat inserts
- ✓ Steering wheel-mounted paddle shifters
- ✓ 12.3-in. Multi-Information Display (MID) with hybrid system indicator
- ✓ Qi-compatible wireless smartphone charging<sup>39</sup>

#### Audio Multimedia

- ✓ 10.5-in. Toyota Audio Multimedia:
  - 10.5-in. touchscreen
  - Wireless Apple CarPlay<sup>®7</sup> compatible
  - Wireless Android Auto<sup>™10</sup> compatible
  - SiriusXM<sup>®</sup> 3-month Platinum Plan trial subscription<sup>11</sup>

#### Connected Services<sup>12</sup> Trials

##### 4G network dependent

- ✓ Wi-Fi Connect 30-day/3-GB trial<sup>17</sup>
- ✓ Service Connect up to 10-year trial<sup>16</sup>
- ✓ Remote Connect 1-year trial<sup>24</sup>
- ✓ Safety Connect<sup>®</sup> up to 10-year trial<sup>13</sup>
- ✓ Drive Connect 1-year trial<sup>20</sup>

#### Safety Features

- ✓ Toyota Safety Sense<sup>™</sup> 2.5+ (TSS 2.5+)<sup>25</sup>
- ✓ Star Safety System<sup>™</sup>
- ✓ Eight airbags<sup>33</sup>
- ✓ Blind Spot Monitor (BSM)<sup>34</sup> with Rear Cross-Traffic Alert (RCTA)<sup>35</sup>

#### Options and Packages

- ✓ Prime XSE Weather Package includes:
  - Heated leather-trimmed steering wheel — rain-sensing variable intermittent windshield wipers with de-icer function
- ✓ Premium Package includes:
  - 10-in. color Head-Up Display (HUD)
  - Panoramic glass roof with front power tilt/slide moonroof
  - Panoramic View Monitor<sup>46</sup> with 360-degree Overhead View in low-speed drive and reverse, and Curb View
  - SofTex®-trimmed<sup>37</sup> seats with sporty red accents and stitching
  - Heated and ventilated front seats; heated rear outboard seats
  - 8-way power-adjustable driver's seat with two-position memory function
  - 4-way power-adjustable front passenger seat
  - Digital rearview mirror with HomeLink<sup>®40</sup> universal transceiver
  - Smart Key System on all doors
  - One 120V/1500W AC power outlet in cargo area<sup>42</sup>
  - Height-adjustable, foot-activated power liftgate<sup>36</sup> with jam protection
  - Front and Rear Parking Assist with Automatic Braking (PA w/AB)<sup>38</sup>
- ✓ 11-speaker JBL<sup>®3</sup> Premium Audio including subwoofer and amplifier

See numbered footnotes in Disclosures section.

RAV4 COLORS



Midnight Black Metallic



Blueprint



Cavalry Blue



Army Green



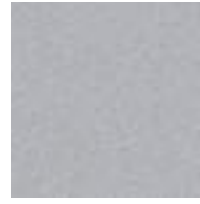
Ruby Flare Pearl<sup>43</sup>



Supersonic Red<sup>43</sup>



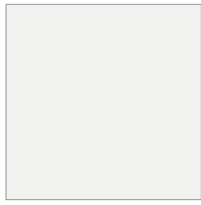
Magnetic Gray Metallic



Silver Sky Metallic



Wind Chill Pearl<sup>43</sup>



Ice Cap

Available Ice Edge roof<sup>43</sup>



Magnetic Gray Metallic, Army Green, Cavalry Blue

Available Midnight Black Metallic roof



Wind Chill Pearl,<sup>43</sup> Silver Sky Metallic, Magnetic Gray Metallic, Cavalry Blue, Supersonic Red,<sup>43</sup> Ice Cap, Army Green

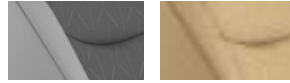
RAV4 TRIMS & WHEELS

LE fabric trim shown in Black



Nutmeg

XLE and Woodland fabric trim shown in Black



Light Gray Nutmeg

XLE Premium/Limited SofTex<sup>®37</sup> trim shown in Black



Light Gray Nutmeg

Adventure grade SofTex<sup>®37</sup> trim shown in Black



Mocha

TRD Off-Road SofTex<sup>®37</sup> trim shown in Black



Hybrid XSE SofTex<sup>®37</sup> trim shown in Black/Blue



Prime SE fabric trim shown in Black/Red



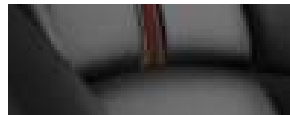
Hybrid SE fabric trim shown in Black/Blue



Prime XSE SofTex<sup>®37</sup> trim shown in Black/Red



Prime XSE Premium SofTex<sup>®37</sup> trim shown in Black/Red



LE 17-in. steel wheel with silver 6-spoke wheel cover



XLE/Hybrid LE/Hybrid XLE 17-in. 5-spoke light gray metallic alloy wheel



Adventure grade 19-in. split 5-spoke matte-gray alloy wheel



TRD Off-Road 18-in. 6-spoke matte-black TRD flow-formed alloy wheel



Hybrid XSE 18-in. multi-spoke black-painted sport alloy wheel



Limited/XLE Premium 19-in. multi-spoke metallic-finished alloy wheel



Hybrid Limited/Hybrid XLE Premium 18-in. multi-spoke dark metallic-finished sport alloy wheel



Prime 18-in. 5-spoke black-painted and machined sport alloy wheel



Prime 19-in. 5-spoke black-painted and machined sport alloy wheel



Woodland Edition 18-in. 6-spoke bronze-colored flow-formed alloy wheel

## RAV4 ACCESSORIES

This is a great way to add extra personality to your RAV4. Not every accessory is available in your area, so for a complete list of accessories, go to [toyota.com/rav4/accessories](http://toyota.com/rav4/accessories).



In-vehicle safe by Console Vault®



Body side moldings



All-weather floor liners<sup>45</sup>



Cargo liner<sup>48</sup>



Doorsill protectors



Roof rack cross bars



Integrated dashcam<sup>49</sup>



Mudguards



Running boards

## WARRANTIES

Every Toyota Car, Truck and SUV is built to exceptional standards. And that's not idle boasting. We back it up with these Limited Warranty Coverages:

**Basic:** 36 months/36,000 miles (all components other than normal wear and maintenance items).

**Hybrid-Related Component Coverage:** Hybrid-related components, including the battery control module, hybrid control module and inverter with converter, are covered for 8 years/100,000 miles. Refer to applicable *Warranty and Maintenance Guide* for details.

**Hybrid Battery:** HV battery is covered for 10 years or 150,000 miles, whichever comes first. Warranty coverage is subject to terms and conditions. Refer to applicable *Warranty and Maintenance Guide* for details.

**Powertrain:** 60 months/60,000 miles (engine, transmission/transaxle, drive system, seatbelts and airbags).

**Rust-Through:** 60 months/unlimited miles (corrosion perforation of sheet metal).

**Emissions:** Coverages vary under Federal and California regulations. Refer to applicable *Warranty and Maintenance Guide* for details.

**Accessories:** For Genuine Toyota Accessories purchased at the time of the new vehicle purchase, the Toyota Accessory Warranty coverage is in effect for 36 months/36,000 miles from the vehicle's in-service date, which is the same coverage as the Toyota New Vehicle Limited Warranty.

For Genuine Toyota Accessories purchased after the new vehicle purchase the coverage is 12 months, regardless of mileage, from the date the accessory was installed on the vehicle, or the remainder of any applicable new vehicle warranty, whichever provides greater coverage.

You may be eligible for transportation assistance if it's necessary that your vehicle be kept overnight for repairs covered under warranty. Please see your authorized Toyota dealership for further details.

For complete details about Toyota's warranties, please visit [www.toyota.com](http://www.toyota.com), refer to the applicable *Warranty and Maintenance Guide* or see your Toyota dealer.



## RAV4 FEATURES<sup>50</sup>

S = Standard O = Optional P = Available as part of a package

Exterior	LE	XLE	XLE Premium	Adventure	TRD Off-Road	Limited	Hybrid LE	Hybrid XLE	Hybrid Woodland Edition	Hybrid XLE Premium	Hybrid SE	Hybrid XSE	Hybrid Limited	Prime SE	Prime XSE	
17-in. steel wheels with silver 6-spoke wheel covers	S															
17-in. 5-spoke light gray metallic alloy wheels		S					S	S								
18-in. multi-spoke dark metallic-finished sport alloy wheels										S				S		
18-in. 6-spoke matte-black-painted TRD flow-formed alloy wheels with black lug nuts					S											
18-in. 6-spoke bronze-colored TRD flow-formed alloy wheels with black lug nuts									S							
19-in. multi-spoke metallic-finished alloy wheels			S			S										
19-in. split 5-spoke matte-gray alloy wheels				S												
18-in. multi-spoke black-gray sport alloy wheels											S	S				
18-in. 5-spoke black-painted and machined sport alloy wheels															S	
19-in. 5-spoke black-painted and machined sport alloy wheels																S
LED projector headlights with DRL function and chrome accents	S	S	S	S	S		S	S	S	S						
LED projector headlights with LED DRL accent lights and turn signals						S					S	S	S	S	S	
LED Daytime Running Lights (DRL)	S	S	S	S	S	S	S	S	S	S	S	S	S	S	S	
Integrated LED fog lights			S	S	S	S			S	S				S		
Vertical LED accent lights											S					S
LED taillights	S	S	S	S	S	S	S	S	S	S	S	S	S	S	S	
Black hexagon-patterned bar front grille	S	S	S				S	S	S	S	S	S				
Unique split-bar front upper grille				S	S				S							
Dark gray metallic-colored hexagon-patterned bar front grille						S								S		
Black diamond-patterned front grille														S	S	
Color-keyed upper front bumper, and black lower front bumper, overfenders and rear bumper	S	S	S				S	S	S	S						
Unique color-keyed upper and black lower front bumper, larger black overfenders, and black rear bumper with silver insert				S												
Unique color-keyed upper and black lower front bumper, larger black overfenders, and black rear bumper with Magnetic Gray Metallic insert					S											
Color-keyed upper and black-painted lower front bumper, overfenders, and rear bumper with metallic gray insert												S				
Color-keyed upper bumper, and black lower front bumper, black overfenders, and rear bumper with metallic gray insert						S								S		
Color-keyed upper and black-painted lower front bumper, overfenders, mirrors, roof, rocker panels, and rear bumper with black insert																S
Color-keyed upper and black-painted lower front bumper, overfenders, rocker panels, and rear bumper with black insert																S
Silver-painted front lower spoiler															S	S
Front and rear mudguards									S							
Two-tone exterior color <sup>43</sup>				O	O			O				S				S
Black RAV4 and TRD Off-Road badging					S											
Black RAV4 and Adventure badging				S												
Black RAV4 badging and Woodland Edition decal									S							
Black power outside mirrors with folding feature	S						S									
Color-keyed heated power outside mirrors with turn signal and blind spot warning <sup>34</sup> indicators, and folding feature	P	S	S	S			P	S		S	S				S	
Black exterior accents, including outside door handles and rear hatch garnish									S							
Black-painted heated power outside mirrors with turn signal and blind spot warning <sup>34</sup> indicators, and folding feature				O	S				S			S				S

See numbered footnotes in Disclosures section.  
See numbered footnotes in Disclosures section.

## RAV4 FEATURES<sup>50</sup>

S = Standard O = Optional P = Available as part of a package

Exterior (continued)	LE	XLE	XLE Premium	Adventure	TRD Off-Road	Limited	Hybrid LE	Hybrid XLE	Hybrid Woodland Edition	Hybrid XLE Premium	Hybrid SE	Hybrid XSE	Hybrid Limited	Prime SE	Prime XSE
Color-keyed heated power outside mirrors with turn signal and blind spot warning <sup>34</sup> indicators, puddle lights and folding feature						S							S		
Color-keyed outside door handles	S						S								
Color-keyed outside door handles with touch-sensor lock/unlock feature on front doors		S	S	S	S			S		S	S	S		S	S
Chrome-accented color-keyed outside door handles with touch-sensor lock/unlock feature on front doors						S							S		
Black outside door handles with touch-sensor lock/unlock feature on front doors								S							
Power tilt/slide moonroof with one-touch open/close		P	S	P	S	S		P		S	P	S	S	P	S
Activity mount									S						
Low-profile black roof rails		S	S			S	S	S		S	S	S	S	S	S
Unique raised black roof rails				S	S										
Unique raised black roof rails with cross bars								S							
Height-adjustable power liftgate <sup>36</sup> with jam protection		P	S	P	S	S		P			P	S	S	S	S
Aerodynamic underbody panels with vortex generators, front and rear wheel spats, and integrated rear spoiler	S	S	S												
Active grille shutters; aerodynamic underbody panels with vortex generators, front and rear wheel spats, and integrated rear spoiler				S	S	S	S	S	S	S	S	S	S	S	S
Dual chrome-tipped exhaust	S	S	S	S	S	S	S	S		S	S	S	S	S	S
Dual black chrome-tipped exhaust									S						
Privacy glass on all rear side, quarter and liftgate windows	S	S	S	S	S	S	S	S	S	S	S	S	S	S	S
Acoustic noise-reducing front side windows														S	S
Intermittent windshield wipers and intermittent rear window wiper	S						S								
Variable intermittent windshield wipers and intermittent rear window wiper		S	S	S	S	S		S	S	S	S	S	S	S	S
Color-keyed roof-mounted shark-fin antenna	S	S	S	S	S	S	S	S	S	S	S	S	S	S	S
Blue-painted shock absorber											S	S			
Red-painted shock absorber					S										S
Stainless steel front skid plate					S										

## Interior

Climate control system with dust and pollen filter and rear-seat vents	S														
Dual zone automatic climate control system with dust and pollen filter and rear-seat vents		S					S	S	S					S	
Dual zone automatic climate control system with dust and pollen filter, front center vent flow controls and rear-seat vents			S	S	S	S				S	S	S	S		S
Qi-compatible wireless smartphone charging <sup>39</sup> with charge indicator light			P		P	P				P		P	P		S
Digital speedometer and instrumentation with analog tachometer, coolant temperature, and fuel gauges; 7-in. digital Multi-Information Display (MID) with customizable settings, odometer, tripmeters, clock, outside temperature, rear passenger seatbelt indicators, fuel economy information, trip timer, shift-position and scheduled maintenance indicators, and warning messages	S	S	S												
Digital speedometer and instrumentation with analog system indicator, battery level meter and fuel gauge; 12.3-in. digital Multi-Information Display (MID) with customizable settings, odometer, tripmeters, clock, outside temperature, rear passenger seatbelt indicators, hybrid energy monitor, battery charge meter, fuel economy information, trip timer, shift-position and scheduled maintenance indicators, and warning messages					P	S									
Digital speedometer and instrumentation with analog hybrid power meter, coolant temperature, and fuel gauges; 7-in. digital Multi-Information Display (MID) with customizable settings, odometer, tripmeters, clock, outside temperature, rear passenger seatbelt indicators, hybrid energy monitor, fuel economy information, trip timer, shift-position and scheduled maintenance indicators, and warning messages							S	S	S	S	S			S	

See numbered footnotes in Disclosures section.

RAV4 FEATURES<sup>50</sup>

S = Standard O = Optional P = Available as part of a package

Interior (continued)	LE	XLE	XLE Premium	Adventure	TRD Off-Road	Limited	Hybrid LE	Hybrid XLE	Hybrid Woodland Edition	Hybrid XLE Premium	Hybrid SE	Hybrid XSE	Hybrid Limited	Prime SE	Prime XSE
Digital speedometer and instrumentation with analog fuel gauge; 12.3-in. digital Multi-Information Display (MID) with customizable settings, odometer, tripmeters, clock, outside temperature, rear passenger seatbelt indicators, hybrid energy monitor, battery charge meter, fuel economy information, trip timer, shift-position and scheduled maintenance indicators, and warning messages												S	S		S
Fabric-trimmed seats; 6-way adjustable front driver's seat; 4-way adjustable front passenger seat with seatback pocket	S						S								
Fabric-trimmed seats with embossed polygonal-design seat inserts; 8-way power-adjustable front driver's seat with lumbar support; 4-way adjustable front passenger seat with seatback pocket		S						S	S						
Fabric-trimmed seats with sporty blue stitching and embossed seat inserts; 8-way power-adjustable front driver's seat with lumbar support; 4-way adjustable front passenger seat with seatback pocket											S				
Fabric-trimmed seats with sporty red stitching and embossed seat inserts; heated front seats; 8-way power-adjustable front driver's seat with lumbar support; 4-way adjustable front passenger seat with seatback pocket															S
SofTex®-trimmed <sup>27</sup> seats; 8-way power-adjustable front driver's seat with lumbar support; 4-way adjustable front passenger seat with seatback pocket			S							S					
SofTex®-trimmed <sup>27</sup> seats with orange accents and stitching, and embossed seat inserts; 8-way power-adjustable front driver's seat with lumbar support; 4-way adjustable front passenger seat with seatback pocket				S											
SofTex®-trimmed <sup>27</sup> seats with red stitching, embossed seat inserts and TRD stitching in front headrests; 8-way power-adjustable driver's seat with lumbar support; 4-way adjustable front passenger seat with seatback pocket					S										
SofTex®-trimmed <sup>27</sup> seats with sporty blue stitching and fabric seat inserts; heated front seats; 8-way power-adjustable front driver's seat with lumbar support; 4-way adjustable front passenger seat with seatback pocket												S			
SofTex®-trimmed <sup>27</sup> seats, heated front seats; 8-way power-adjustable driver's seat with two-position memory function and lumbar support; 4-way adjustable front passenger seat with seatback pocket						S								S	
SofTex®-trimmed <sup>27</sup> seats with sporty red stitching and fabric seat inserts; heated front seats; 8-way power-adjustable front driver's seat with lumbar support and seatback pocket; 4-way adjustable front passenger seat with seatback pocket															S
60/40 split reclining fold-flat rear seat with center armrest and cup holders	S	S	S	S	S	S	S	S	S	S	S	S	S	S	S
Heated front seating		P	P	P				P		P	P	S		S	S
Heated and ventilated front seating					P	S								S	
Black carpet flooring with driver-side footrest	S	S	S	S	S	S	S	S	S	S	S	S	S	S	S
TRD all-weather floor mats and cargo liner <sup>45</sup>					S										
Woodland all-weather floor mats and cargo liner <sup>45</sup>									S						
Urethane tilt/telescopic 3-spoke steering wheel with controls for audio, Multi-Information Display (MID), Bluetooth <sup>®51</sup> hands-free phone, voice-command, Dynamic Radar Cruise Control (DRCC), <sup>27</sup> Lane Departure Alert (LDA) <sup>28</sup> and Lane Trace Assist (LTA) <sup>30</sup>	S	S					S	S	S						
Leather-trimmed tilt/telescopic 3-spoke steering wheel with silver accent and controls for audio, Multi-Information Display (MID), Bluetooth <sup>®51</sup> hands-free phone, voice-command, Dynamic Radar Cruise Control (DRCC), <sup>27</sup> Lane Departure Alert (LDA) <sup>28</sup> and Lane Trace Assist (LTA) <sup>30</sup>			S	S	S	S				S	S	S	S		
Leather-trimmed tilt/telescopic three-spoke steering wheel with silver accent and red-stitching, and controls for audio, Multi-Information Display (MID), Bluetooth <sup>®51</sup> hands-free phone, voice-command, Dynamic Radar Cruise Control (DRCC), <sup>27</sup> Lane Departure Alert (LDA) <sup>30</sup> and Lane Trace Assist (LTA) <sup>32</sup>															S

See numbered footnotes in Disclosures section.  
See numbered footnotes in Disclosures section.

RAV4 FEATURES<sup>50</sup>

S = Standard O = Optional P = Available as part of a package

Interior (continued)	LE	XLE	XLE Premium	Adventure	TRD Off-Road	Limited	Hybrid LE	Hybrid XLE	Hybrid Woodland Edition	Hybrid XLE Premium	Hybrid SE	Hybrid XSE	Hybrid Limited	Prime SE	Prime XSE
Leather-trimmed tilt/telescopic three-spoke steering wheel with silver accent and red-stitching, paddle shifters, and controls for audio, Multi-Information Display (MID), Bluetooth <sup>®51</sup> hands-free phone, voice-command, Dynamic Radar Cruise Control (DRCC), <sup>27</sup> Lane Departure Alert (LDA) <sup>28</sup> and Lane Trace Assist (LTA) <sup>30</sup>															S
Turn signal stalk with headlight controls and one-touch 3-blink lane change turn signals	S	S	S	S	S	S	S	S	S	S	S	S	S	S	S
Shift lever with sequential mode	S	S					S	S	S						
Leather-trimmed shift lever with sequential mode			S	S	S	S				S	S	S	S	S	S
Steering wheel-mounted paddle shifters															S
Soft-touch dash and armrests, with stitched dash accents	S	S					S	S	S		S				S
Soft-touch dash and armrests, with stitched dash and center console accents, and anti-slip interior door grip			S							S					
Soft-touch dash, door and armrests with stitched dash, door and center console accents, and anti-slip interior door grip				S	S	S						S	S		S
Black in-dash storage trays	S	S					S	S	S		S				
Black anti-slip in-dash storage trays			S	S	S					S		S			S
Orange-accented interior, including orange stitching on dash, doors and seat, and orange cup holder trim and black anti-slip in-dash storage trays				S											
Red-accented interior, including red stitching on dash, doors and seat, and red cup holder trim and black anti-slip in-dash storage trays					S										
Blue-accented interior, including blue stitching on dash, doors and seat, and black anti-slip in-dash storage trays with blue ambient lighting												S			
Blue-accented interior, including blue stitching on dash and seat, and black in-dash storage trays											S				
Dark brown-accented interior, including dark brown stitching on dash, door and seat stitching, and dark brown cup holder trim and anti-slip in-dash storage trays with blue ambient lighting						S								S	
Red-accented interior, including red stitching on dash and seat, and black in-dash storage trays															S
Red-accented interior, including red stitching on dash, doors, console, and seat, and black anti-slip in-dash storage trays with blue ambient lighting															S
Ash Gray fabric-trimmed headliner	S	S	S	S	S	S	S	S	S	S			S		
Black fabric-trimmed headliner		S	S	S	S	S		S	S	S	S	S	S	S	S
Silver interior door handles															S
Black interior door handles	S						S								
Remote keyless entry system with lock, unlock, panic functions and remote illuminated entry	S						S								
Smart Key System on front doors and liftgate with Push Button Start, remote keyless entry system with lock, unlock, panic functions and remote illuminated entry		S		S				S	S		S				
Smart Key System on front doors and liftgate with Push Button Start, remote keyless entry system with lock, unlock, and panic functions, power liftgate <sup>36</sup> and remote illuminated entry		P	S	P	S	S		P		S	P	S	S	S	S
Power windows with auto up/down and jam protection in all positions	S	S	S	S	S	S	S	S	S	S	S	S	S	S	S
Rear liftgate window defogger	S	S	S	S	S	S	S	S	S	S	S	S	S	S	S
Power door locks with shift-linked automatic lock/unlock feature	S	S	S	S	S	S	S	S	S	S	S	S	S	S	S
Day/night rearview mirror	S	S	S	S	S		S	S	S	S	S				S
Auto-dimming rearview mirror with HomeLink <sup>®40</sup> universal transceiver						S							S	S	S
Digital rearview mirror with HomeLink <sup>®40</sup> universal transceiver			P		P	P		P				P	P		P
Overhead console with maplights, sunglasses storage and Safety Connect <sup>®13</sup> button	S	S		S			S	S	S		S			S	
Overhead console with maplights, sunglasses storage, Safety Connect <sup>®13</sup> button and power tilt/slide moonroof controls		P	S	P	S	S		P		S	P	S	S	P	S
Sun visors with illuminated vanity mirrors	S						S								

See numbered footnotes in Disclosures section.  
See numbered footnotes in Disclosures section.

## RAV4 FEATURES<sup>50</sup>

S = Standard O = Optional P = Available as part of a package

Interior (continued)	LE	XLE	XLE Premium	Adventure	TRD Off-Road	Limited	Hybrid LE	Hybrid XLE	Hybrid Woodland Edition	Hybrid XLE Premium	Hybrid SE	Hybrid XSE	Hybrid Limited	Prime SE	Prime XSE
Sun visors with sliding extensions and illuminated vanity mirrors		S	S	S	S	S		S	S	S	S	S	S	S	S
Center console with covered storage compartment, two cup holders, drive mode, Electronic Parking Brake (EPB) <sup>52</sup> and automatic Brake Hold <sup>53</sup> controls, and front storage tray	S	S	S			S	S	S	S	S	S	S	S	S	S
Center console with covered storage compartment, two cup holders, drive mode, Multi-Terrain Select (MTS), Electric Parking Brake (EPB) <sup>52</sup> and automatic Brake Hold <sup>53</sup> controls, and front storage tray	S (AWD)	S (AWD)	S (AWD)	S	S	S (AWD)									
Passenger-side lockable glove compartment	S	S	S	S	S	S	S	S	S	S	S	S	S	S	S
Height-adjustable rear cargo area deck board	S	S	S	S	S	S	S	S	S	S	S	S	S	S	S
Cargo area tonneau cover	P	S	S	S	S	S	P	S	S	S	S	S	S	S	S
Cargo area deekside-mounted storage net <sup>48</sup>				S	S	S						S	S		
TRD cargo area liner					S										
Three USB ports <sup>32</sup> — USB media port in front storage tray and two additional charge ports in front center console	S						S								
Five USB ports <sup>32</sup> — USB media port in front storage tray and four additional charge ports (two in front center console and two rear seat ports on the back of center console)		S	S	S	S	S		S	S	S	S	S	S	S	S
One 12V/120W auxiliary power outlet <sup>54</sup> in front instrument panel storage tray and one 12V/120W auxiliary power outlet <sup>54</sup> in second row	S						S								
One 12V/120W auxiliary power outlet <sup>54</sup> in front instrument panel storage tray and one 12V/120W auxiliary power outlet <sup>54</sup> in cargo area		S	S	S	S	S		S	S	S	S	S	S	S	S
One 120V/100W AC power outlet <sup>42</sup> in cargo area				S	S				S						
Blue ambient illumination for in-dash shelves, center console cup holders and in front footwells						S						S	S		S
LED front-seat reading lights, dome light and cargo area light	S	S	S	S	S	S	S	S	S	S	S	S	S	S	S
Front-door storage pockets with bottle holders	S	S	S	S	S	S	S	S	S	S	S	S	S	S	S
Electric Parking Brake (EPB) <sup>52</sup> with Brake Hold <sup>53</sup>	S	S	S	S	S	S	S	S	S	S	S	S	S	S	S

## Audio Multimedia

8-in. Toyota Audio Multimedia, six speakers, with wireless Apple CarPlay <sup>67</sup> & Android Auto <sup>TM10</sup> compatible, SiriusXM <sup>®</sup> 3-month Platinum Plan trial subscription <sup>11</sup> . See <a href="http://toyota.com/audio-multimedia">toyota.com/audio-multimedia</a> for details.	S	S	S	S			S	S	S	S	S				
10.5-in. Toyota Audio Multimedia, six speakers, with wireless Apple CarPlay <sup>67</sup> & Android Auto <sup>TM10</sup> compatible, SiriusXM <sup>®</sup> 3-month Platinum Plan trial subscription <sup>11</sup> . See <a href="http://toyota.com/audio-multimedia">toyota.com/audio-multimedia</a> for details.			P	P	S	S						P	S	S	S
11-speaker JBL <sup>®3</sup> Premium Audio including amplifier and subwoofer		P	P	P	P	S						P	S		S

## Connected Services<sup>12</sup> Trials

Wi-Fi Connect <sup>17</sup> — with AT&T Wi-Fi hotspot and Integrated Streaming (Apple Music <sup>®18</sup> and Amazon Music <sup>19</sup> ) compatibility. Subscription required. 30 days or up to 3 GB trial included. <sup>17</sup> 4G network dependent.	S	S	S	S	S	S	S	S	S	S	S	S	S	S	S
Service Connect <sup>16</sup> — receive personalized maintenance updates and vehicle health reports. Subscription required. 4G network dependent. Up to 10-year trial included. <sup>16</sup>	S	S	S	S	S	S	S	S	S	S	S	S	S	S	S
Remote Connect <sup>24</sup> — remotely interact with your vehicle through the Toyota app <sup>55</sup> via your smartwatch. Depending on grade, allows you to lock/unlock doors, start and stop the vehicle, locate your last parked location, check vehicle status and monitor guest drivers. Subscription required after trial. 4G network dependent. 1-year trial included. <sup>24</sup>	O	S	S	S	S	S	O	S	S	S	S	S	S	S	S
Safety Connect <sup>®13</sup> — includes Emergency Assistance Button, Enhanced Roadside Assistance, <sup>14</sup> Automatic Collision Notification, and Stolen Vehicle Locator. <sup>15</sup> Subscription required. 4G network dependent. Up to 10-year trial included. <sup>13</sup>	S	S	S	S	S	S	S	S	S	S	S	S	S	S	S

# RAV4 FEATURES<sup>50</sup>

S = Standard O = Optional P = Available as part of a package

## Connected Services<sup>12</sup> Trials (continued)

	LE	XLE	XLE Premium	Adventure	TRD Off-Road	Limited	Hybrid LE	Hybrid XLE	Hybrid Woodland Edition	Hybrid XLE Premium	Hybrid SE	Hybrid XSE	Hybrid Limited	Prime SE	Prime XSE
Drive Connect <sup>20</sup> with 1-year trial subscription <sup>20</sup> — includes Cloud Navigation <sup>23</sup> with Google Points-of-Interest (POI) data, Intelligent Assistant <sup>22</sup> with Hey, Toyota, and Destination Assist. <sup>21</sup> Subscription required. 4G network dependent.	O	O	O	O	S	S	O	O	O	O	O	S	S	O	S

## Safety/Convenience

Toyota Safety Sense™ 2.5 (TSS 2.5) <sup>25</sup> — Pre-Collision System w/Pedestrian Detection (PCS w/PD), <sup>26</sup> Full-Speed Range Dynamic Radar Cruise Control (DRCC), <sup>27</sup> Lane Departure Alert w/Steering Assist (LDA w/SA), <sup>28</sup> Lane Tracing Assist (LTA), <sup>30</sup> Automatic High Beams (AHB), <sup>29</sup> Road Sign Assist (RSA) <sup>31</sup>	S	S	S	S	S	S	S	S	S	S	S	S	S		
---	---	---	---	---	---	---	---	---	---	---	---	---	---	--	--

Toyota Safety Sense™ 2.5+ (TSS 2.5+) <sup>25</sup> — Pre-Collision System with Pedestrian Detection (PCS w/PD), <sup>26</sup> Lane Departure Alert with Steering Assist (LDA w/SA), <sup>28</sup> Automatic High Beams (AHB), <sup>29</sup> Lane Tracing Assist (LTA), <sup>30</sup> Road Sign Assist (RSA) <sup>31</sup> and Full-Speed Range Dynamic Radar Cruise Control (DRCC) <sup>27</sup>														S	S
--	--	--	--	--	--	--	--	--	--	--	--	--	--	---	---

<b>STAR SAFETY SYSTEM™</b> Star Safety System™ — includes Enhanced Vehicle Stability Control (VSC), <sup>56</sup> Traction Control (TRAC), Anti-lock Brake System (ABS), Electronic Brake-force Distribution (EBD), Brake Assist (BA) and Smart Stop Technology <sup>57</sup> (SST)	S	S	S	S	S	S	S	S	S	S	S	S	S	S	S
---	---	---	---	---	---	---	---	---	---	---	---	---	---	---	---

Eight airbags <sup>33</sup> — includes driver and front passenger Advanced Airbag System, driver and front passenger seat-mounted side airbags, driver's knee airbag, front passenger seat cushion airbag, and front and rear side curtain airbags	S	S	S	S	S	S	S	S	S	S	S	S	S	S	S
--	---	---	---	---	---	---	---	---	---	---	---	---	---	---	---

3-point seatbelts for all seating positions; driver-side Emergency Locking Retractor (ELR) and Automatic/Emergency Locking Retractor (ALR/ELR) on all passenger seatbelts	S	S	S	S	S	S	S	S	S	S	S	S	S	S	S
---	---	---	---	---	---	---	---	---	---	---	---	---	---	---	---

Adjustable front shoulder anchors	S	S	S	S	S	S	S	S	S	S	S	S	S	S	S
-----------------------------------	---	---	---	---	---	---	---	---	---	---	---	---	---	---	---

Front and outboard second-row seatbelts with seatbelt pretensioners with force limiters	S	S	S	S	S	S	S	S	S	S	S	S	S	S	S
---	---	---	---	---	---	---	---	---	---	---	---	---	---	---	---

Backup camera <sup>58</sup> with dynamic gridlines	S	S	S	S	S	S	S	S	S	S	S	S	S	S	S
--	---	---	---	---	---	---	---	---	---	---	---	---	---	---	---

LATCH (Lower Anchors and Tethers for CHildren) includes lower anchors on outboard rear seats and tether anchors on all rear seats	S	S	S	S	S	S	S	S	S	S	S	S	S	S	S
---	---	---	---	---	---	---	---	---	---	---	---	---	---	---	---

Child-protector rear door locks and power window lockout control	S	S	S	S	S	S	S	S	S	S	S	S	S	S	S
--	---	---	---	---	---	---	---	---	---	---	---	---	---	---	---

Front and rear side-impact door beams	S	S	S	S	S	S	S	S	S	S	S	S	S	S	S
---------------------------------------	---	---	---	---	---	---	---	---	---	---	---	---	---	---	---

Tire Pressure Monitor System (TPMS) <sup>59</sup>	S	S	S	S	S	S	S	S	S	S	S	S	S	S	S
---	---	---	---	---	---	---	---	---	---	---	---	---	---	---	---

Blind Spot Monitor (BSM) <sup>34</sup> with Rear Cross-Traffic Alert (RCTA) <sup>35</sup>	P	S	S	S	S	S	P	S	S	S	S	S	S	S	S
---	---	---	---	---	---	---	---	---	---	---	---	---	---	---	---

Front and Rear Parking Assist with Automatic Braking (PA w/AB) <sup>38</sup>			P		P	S				P		P	S		P
--	--	--	---	--	---	---	--	--	--	---	--	---	---	--	---

Vehicle Proximity Notification System (VPNS) <sup>60</sup>							S	S	S	S	S	S	S	S	S
--	--	--	--	--	--	--	---	---	---	---	---	---	---	---	---

Trailer-Sway Control (TSC) <sup>61</sup>	S	S	S	S	S	S	S	S	S	S	S	S	S	S	S
--	---	---	---	---	---	---	---	---	---	---	---	---	---	---	---

Hill Start Assist Control (HAC) <sup>62</sup>	S	S	S	S	S	S	S	S	S	S	S	S	S	S	S
---	---	---	---	---	---	---	---	---	---	---	---	---	---	---	---

Downhill Assist Control (DAC) <sup>63</sup>				S	S	S (AWD)									
---	--	--	--	---	---	---------	--	--	--	--	--	--	--	--	--

Anti-theft system with alarm and engine immobilizer <sup>64</sup>		P	P	P	S	S		P		P	P	S	S		S
---	--	---	---	---	---	---	--	---	--	---	---	---	---	--	---

Anti-theft system with engine immobilizer <sup>64</sup>	S	S	S	S			S	S	S	S	S			S	
---	---	---	---	---	--	--	---	---	---	---	---	--	--	---	--

## Packages and Options

Rear cargo area cover	O	S	S	S	S	S	O	S	S	S	S	S	S	S	S
-----------------------	---	---	---	---	---	---	---	---	---	---	---	---	---	---	---

Blind Spot Monitor (BSM) <sup>34</sup> with Rear Cross-Traffic Alert (RCTA) <sup>35</sup> — includes color-keyed heated power outside mirrors with turn signal and blind spot warning <sup>34</sup> indicators	O	S	S	S	S	S	O	S	S	S	S	S	S	S	S
--	---	---	---	---	---	---	---	---	---	---	---	---	---	---	---

Panoramic glass roof with front power tilt/slide moonroof						O						O	O		O
---	--	--	--	--	--	---	--	--	--	--	--	---	---	--	---

Two-tone exterior color				O	O							S			S
-------------------------	--	--	--	---	---	--	--	--	--	--	--	---	--	--	---

Premium paint <sup>43</sup>	O	O	O	O	O	O	O	O		O	O	O	O	O	O
-----------------------------	---	---	---	---	---	---	---	---	--	---	---	---	---	---	---

Panoramic glass roof						O						O	O		
----------------------	--	--	--	--	--	---	--	--	--	--	--	---	---	--	--

## RAV4 FEATURES<sup>50</sup>

S = Standard O = Optional P = Available as part of a package

Packages and Options (continued)	LE	XLE	XLE Premium	Adventure	TRD Off-Road	Limited	Hybrid LE	Hybrid XLE	Hybrid Woodland Edition	Hybrid XLE Premium	Hybrid SE	Hybrid XSE	Hybrid Limited	Prime SE	Prime XSE		
Rear outboard passenger heated seating						P								P	P	P	
10.5-in. Toyota Audio Multimedia, six speakers, with wireless Apple CarPlay <sup>67</sup> & Android Auto <sup>TM10</sup> compatible, SiriusXM <sup>®</sup> 3-month Platinum Plan trial subscription <sup>11</sup> See <a href="http://toyota.com/audio-multimedia">toyota.com/audio-multimedia</a> for details.			P		S					P		S	S			S	
11-speaker JBL <sup>®3</sup> Premium Audio including amplifier and subwoofer			P	P	P	S				P		P	S			P	
<b>XLE Grade Weather Package</b> — includes heated leather-trimmed steering wheel, heated front seats and rain-sensing variable intermittent windshield wipers with de-icer function		P															
<b>XLE Premium Grade Weather Package</b> — includes heated leather-trimmed steering wheel, heated front seats, 8-way power-adjustable driver's seat with two-position memory function and lumbar support, and rain-sensing variable intermittent windshield wipers with de-icer function			P							P							
<b>Adventure Grade Weather Package</b> — includes heated steering wheel, heated front seats, and rain-sensing variable intermittent windshield wipers with de-icer function				P													
<b>TRD Off-Road Grade Weather Package</b> — includes heated steering wheel, perforated heated and ventilated front seats, and rain-sensing variable intermittent windshield wipers with de-icer function					P												
<b>Hybrid XSE Grade Weather Package</b> — includes heated steering wheel and rain-sensing variable intermittent windshield wipers with de-icer function													P				
<b>Limited Grade Weather Package</b> — includes heated steering wheel, perforated heated and ventilated front seats, rear outboard passenger heated seating with perforated inserts, and rain-sensing variable intermittent windshield wipers with de-icer function						P										P	
<b>Prime SE Weather and Moonroof Package</b> — includes heated leather-trimmed steering wheel, rear outboard passenger heated seating, rain-sensing variable intermittent windshield wipers with de-icer function, and power tilt/slide moonroof with one-touch open/close																P	
<b>Prime XSE Weather Package</b> — includes heated leather-trimmed steering wheel and rain-sensing variable intermittent windshield wipers with de-icer function																	P
<b>XLE Grade Convenience Package</b> — includes height-adjustable power liftgate <sup>36</sup> with jam protection and power tilt/slide moonroof with one-touch open/close		P															P
<b>Adventure Grade Convenience Package</b> — includes height-adjustable power liftgate <sup>36</sup> with jam protection and power tilt/slide moonroof with one-touch open/close				P													
<b>Woodland Grade Weather Package</b> — includes heated leather-trimmed steering wheel, heated front seats and rain-sensing variable intermittent windshield wipers with de-icer function													P				
<b>Hybrid SE Grade Convenience Package</b> — includes height-adjustable power liftgate <sup>36</sup> with jam protection and power tilt/slide moonroof with one-touch open/close																	P
<b>XLE Premium Grade Advanced Technology Package</b> — includes Front and Rear Parking Assist with Automatic Braking (PA w/AB) <sup>38</sup> and Qi-compatible wireless smartphone charging <sup>39</sup> with charge indicator light			P														P
<b>TRD Off-Road Grade Advanced Technology Package</b> — includes Front and Rear Parking Assist with Automatic Braking (PA w/AB) <sup>38</sup> and Qi-compatible wireless smartphone charging <sup>39</sup> with charge indicator light					P												
<b>Hybrid XSE Grade Advanced Technology Package</b> — includes power front driver's seat with two-position memory function; Front and Rear Parking Assist with Automatic Braking (PA w/AB) <sup>38</sup> Smart Key System on all doors and liftgate <sup>36</sup> ; height-adjustable foot-activated power liftgate <sup>36</sup> with jam protection; Panoramic View Monitor <sup>46</sup> with 360-degree Overhead View in low-speed drive and reverse, and Curb View; and Qi-compatible wireless smartphone charging <sup>39</sup> with charge indicator light																	P

See numbered footnotes in Disclosures section.  
See numbered footnotes in Disclosures section.

## RAV4 FEATURES<sup>50</sup>

S = Standard O = Optional P = Available as part of a package

Packages and Options (continued)	LE	XLE	XLE Premium	Adventure	TRD Off-Road	Limited	Hybrid LE	Hybrid XLE	Hybrid Woodland Edition	Hybrid XLE Premium	Hybrid SE	Hybrid XSE	Hybrid Limited	Prime SE	Prime XSE	
<p><b>Limited Grade Advanced Technology Package</b> — includes Smart Key System on all doors and liftgate;<sup>36</sup> height-adjustable foot-activated power liftgate<sup>36</sup> with jam protection; Panoramic View Monitor<sup>49</sup> with 360-degree Overhead View in low-speed drive and reverse, and Curb View; and Qi-compatible wireless smartphone charging<sup>39</sup> with charge indicator light</p>															P	
<p><b>Prime XSE Premium Package</b> — includes 10-in. color Head-Up Display (HUD) with speedometer, navigation and Hybrid System Indicator; panoramic glass roof with front power tilt/slide moonroof; Panoramic View Monitor<sup>46</sup> with 360-degree Overhead View in low-speed drive and reverse, and Curb View; unique SofTex<sup>®</sup>-trimmed<sup>37</sup> seats with sporty red accents and stitching; heated and ventilated front seats; heated rear outboard seats; 8-way power-adjustable driver's seat with two-position memory function; 4-way power adjustable front passenger seat with seatback pocket; digital rearview mirror with HomeLink<sup>®40</sup> universal transceiver; Smart Key System on all doors; one 120V/1500W AC power outlet<sup>42</sup> in cargo area; height-adjustable, foot-activated power liftgate<sup>36</sup> with jam protection; Front and Rear Parking Assist with Automatic Braking (PA w/AB)<sup>38</sup></p>																P



# RAV4 SPECIFICATIONS

S = Standard O = Optional P = Available as part of a package

## Mechanical/Performance

	LE	XLE	XLE Premium	Adventure	TRD Off-Road	Limited	Hybrid LE	Hybrid XLE	Hybrid Woodland Edition	Hybrid XLE Premium	Hybrid SE	Hybrid XSE	Hybrid Limited	Prime SE	Prime XSE
<b>ENGINE</b>															
Plug-in Hybrid engine: 2.5-Liter Dynamic Force 4-Cylinder with SPORT, Eco, NORMAL modes, TRAIL mode, EV/HV mode and HV/EV Charge Hold; 302 net combined hp; internal combustion engine with 176 hp @ 5300 rpm; electric motor power output (front/rear) 179/53 hp (134/40 kW); torque (front/rear) 199/89 lb.-ft.; battery 355.2V														S	S
Hybrid engine: 2.5-Liter Dynamic Force 4-Cylinder with SPORT, Eco, NORMAL, EV, <sup>47</sup> TRAIL drive modes; 219 net combined hp; internal combustion engine with 176 hp @ 5300 rpm; electric motor power output (front/rear) 118/54 hp (88/40 kW); torque (front/rear) 149/89 lb.-ft.; battery 259.0V							S	S	S	S	S	S	S		
2.5-Liter Dynamic Force 4-Cylinder DOHC D-4S Injection with Dual Variable Valve Timing with intelligence (VVT-i), with SPORT, Eco, NORMAL Modes, 203 hp @ 6600 rpm; 184 lb.-ft. @ 5000 rpm	S	S	S	S	S	S									
Stop and Start Engine System (S&S) <sup>65</sup>	S (AWD)	S	S												
Compression ratio: 14.0:1							S	S	S	S	S	S	S	S	S
Compression ratio: 13.0:1	S	S	S	S	S	S									
Induction system: (D-4S) Dual-Injection (Direct-Injection and Port-injection) EFI with Electronic Throttle Control System with intelligence (ETCS-i)	S	S	S	S	S	S	S	S	S	S	S	S	S	S	S
Emission rating: Super Ultra Low Emission Vehicle (SULEV)							S	S	S	S	S	S	S	S	S
Emission rating: Ultra Low Emission Vehicle (ULEV)	S	S	S	S	S	S									
<b>HV ELECTRIC MOTOR</b>															
Power output (front/rear): 118/54 hp (88/40 kW)							S	S	S	S	S	S	S		
Torque (front/rear): 149/89 lb.-ft. (202/121 N·m)							S	S	S	S	S	S	S		
Power output (front/rear) 179/53 hp (134/40 kW)														S	S
Torque (front/rear) 199/89 lb.-ft.														S	S
<b>HV TRACTION BATTERY</b>															
Type: Sealed Lithium-ion (Li-ion)										S	S	S	S	S	S
Type: Nickel-Metal Hydride (Ni-MH) 244.8V							S	S	S						
Voltage: 259.0V										S	S	S	S		
Voltage: 355.2V														S	S
<b>CHARGING</b>															
6.6kW onboard charger														S	S
<b>TRANSMISSION</b>															
Direct Shift 8-speed Electronically Controlled automatic Transmission with intelligence (ECT-i) and sequential shift mode	S	S	S	S	S	S									
Electronically controlled Continuously Variable Transmission (ECVT) with sequential shift mode							S	S	S	S	S	S	S	S	S
Engine oil cooler, automatic transmission fluid cooler and upgraded 150-amp alternator				S	S										
Engine oil cooler, automatic transmission fluid cooler and hybrid system cooler							S	S	S	S	S	S	S	S	S
<b>DRIVETRAIN</b>															
Front-Wheel Drive (FWD)	S	S	S			S									
All-Wheel Drive (AWD)	S (AWD)	S (AWD)	S (AWD)												
Dynamic Torque Vectoring All-Wheel Drive (TV-AWD) with Rear Driveline Disconnect				S	S	S (AWD)									
Electronic On-Demand All-Wheel Drive (AWD)							S	S	S	S	S	S	S	S	S
All-Wheel Drive Integrated Management (AIM) with Multi-Information Display (MID) monitor		S (AWD)	S (AWD)	S	S	S (AWD)	S	S	S	S	S	S	S	S	S
<b>CAPABILITY</b>															
Ground clearance (in.)	8.4	8.4	8.6	8.6	8.6	8.6	8.1	8.1	8.1	8.1	8.1	8.1	8.1	8.1	8.2
Approach/departure angle (degrees)	19.0/21.0	19.0/21.0	19.0/21.0	19.0/21.0	19.0/21.0	19.0/21.0	19.0/21.0	19.0/21.0	19.0/21.0	19.0/21.0	19.0/21.0	19.0/21.0	19.0/21.0	19.0/21.0	19.5/21.5
Hill Start Assist Control (HAC) <sup>62</sup>	S	S	S	S	S	S	S	S	S	S	S	S	S	S	S

See numbered footnotes in Disclosures section.  
See numbered footnotes in Disclosures section.

# RAV4 SPECIFICATIONS

S = Standard O = Optional P = Available as part of a package

## Mechanical/Performance (continued)

	LE	XLE	XLE Premium	Adventure	TRD Off-Road	Limited	Hybrid LE	Hybrid XLE	Hybrid Woodland Edition	Hybrid XLE Premium	Hybrid SE	Hybrid XSE	Hybrid Limited	Prime SE	Prime XSE	
<b>DRIVE MODES</b>																
SPORT, Eco and NORMAL drive modes	S	S	S	S	S	S										
Multi-Terrain Select (MTS) dial with MUD & SAND, ROCK & DIRT, SNOW and NORMAL drive modes	S (AWD)	S (AWD)	S (AWD)													
Multi-Terrain Select (MTS) dial with MUD & SAND, ROCK & DIRT, SNOW and NORMAL drive modes, and Downhill Assist Control (DAC) <sup>63</sup>				S	S	S (AWD)										
Drive mode dial with SPORT, Eco and NORMAL modes, EV Mode <sup>47</sup> and TRAIL mode							S	S	S	S	S	S	S			
Drive mode dial with SPORT, Eco and NORMAL modes, TRAIL mode, Auto EV/HV mode, and HV/EV Charge Hold														S	S	
<b>BODY CONSTRUCTION</b>																
Reinforced unitized steel body	S	S	S	S	S	S	S	S	S	S	S	S	S	S	S	S
<b>SUSPENSION</b>																
Independent MacPherson strut front suspension with stabilizer bar; multi-link rear suspension with stabilizer bar	S	S	S	S		S	S	S	S	S				S	S	S
TRD-tuned independent MacPherson strut front suspension with stabilizer bar; multi-link rear suspension with stabilizer bar; unique shocks, struts, red-painted coil springs, jounce bumpers					S											
Sport-tuned independent MacPherson strut front suspension with stabilizer bar; sport-tuned multi-link rear suspension with stabilizer bar											S	S				
TRD-tuned independent MacPherson strut front suspension with stabilizer bar; multi-link rear suspension with stabilizer bar; trail-focused struts, shocks, coil springs and bump stops									S							
<b>STEERING</b>																
Electric Power Steering (EPS); power-assisted rack-and-pinion	S	S	S	S	S	S	S	S	S	S	S	S	S	S	S	S
Steering ratio	14.3:1	14.3:1	14.4:1	14.4:1	14.4:1	14.4:1	14.3:1	14.3:1	14.3:1	14.3:1	14.3:1	14.3:1	14.3:1	14.3:1	14.4:1	14.4:1
Steering wheel turns (lock-to-lock)	2.76	2.76	2.65	2.65	2.65	2.65	2.76	2.76	2.76	2.76	2.76	2.76	2.76	2.76	2.76	2.65
Turning circle diameter, curb-to-curb (ft.)	36.1	36.1	37.4	37.4	37.4	37.4	36.1	36.1	36.1	36.1	36.1	36.1	36.1	36.1	36.1	37.4
<b>BRAKES</b>																
Active Cornering Assist (ACA)	S	S	S	S	S	S	S	S	S	S	S	S	S	S	S	S
Power-assisted ventilated 12.0-in. front disc brakes; ventilated 11.1-in. rear disc brakes	S	S	S	S	S	S	S	S	S	S	S	S	S			
Power-assisted ventilated 12.9-in. front disc brakes; ventilated 12.4-in. rear disc brakes															S	S
Electronically Controlled Braking (ECB) system with integrated regenerative braking							S	S	S	S	S	S	S	S	S	S
<b>RATIOS</b>																
1st gear	5.250	5.250	5.250	5.250	5.250	5.250										
2nd gear	3.028	3.028	3.028	3.028	3.028	3.028										
3rd gear	1.95	1.95	1.95	1.95	1.95	1.95										
4th gear	1.456	1.456	1.456	1.456	1.456	1.456										
5th gear	1.220	1.220	1.220	1.220	1.220	1.220										
6th gear	1.000	1.000	1.000	1.000	1.000	1.000										
7th gear	0.808	0.808	0.808	0.808	0.808	0.808										
8th gear	0.673	0.673	0.673	0.673	0.673	0.673										
Reverse	4.014	4.014	4.014	4.014	4.014	4.014										
Axle ratio	3.177	3.177	3.177	3.177	3.177	3.177	3.605	3.605	3.605	3.605	3.605	3.605	3.605	3.605	3.605	3.605
Final drive gear ratio	2.235	2.235	2.235	2.235	2.235	2.235	10.781	10.781	10.781	10.781	10.781	10.781	10.781	10.781	10.781	10.781
<b>TOW PREP EQUIPMENT<sup>41</sup></b>																
Automatic transmission fluid cooler	S	S	S			S										
Tow hitch receiver and wiring harness	O	O	O	O	O	O	O	O	O	O	O	O	O	O	O	O

# RAV4 SPECIFICATIONS

S = Standard O = Optional P = Available as part of a package

## Dimensions

	LE	XLE	XLE Premium	Adventure	TRD Off-Road	Limited	Hybrid LE	Hybrid XLE	Hybrid Woodland Edition	Hybrid XLE Premium	Hybrid SE	Hybrid XSE	Hybrid Limited	Prime SE	Prime XSE	
<b>EXTERIOR DIMENSIONS (in.)</b>																
Overall height with/without antenna	67.0	67.0	67.2	68.6	68.6	67.2	67.0	67.0	67.0	67.0	67.0	67.0	67.0	67.0	67.0	67.2
Overall length/width	180.9/73.0	180.9/73.0	180.9/73.0	181.5/73.4	181.5/73.4	180.9/73.0	180.9/73.0	180.9/73.0	180.9/73.0	180.9/73.0	180.9/73.0	180.9/73.0	180.9/73.0	180.9/73.0	180.9/73.0	180.9/73.0
Track (front/rear)	63.0/63.7	63.0/63.7	62.6/63.3	62.6/63.3	62.6/63.3	62.6/63.3	63.0/63.7	63.0/63.7	63.0/63.7	62.6/63.3	63.0/63.7	63.0/63.7	63.0/63.7	63.0/63.7	63.0/63.7	63.0/63.7
Wheelbase	105.9	105.9	105.9	105.9	105.9	105.9	105.9	105.9	105.9	105.9	105.9	105.9	105.9	105.9	105.9	105.9
<b>INTERIOR DIMENSIONS, FRONT/SECOND-ROW SEATS (in.)</b>																
Head room (front/rear) with moonroof	37.7/39.5	37.7/39.5	37.7/39.5	37.7/39.5	37.7/39.5	37.7/39.5	37.7/39.5	37.7/39.5	37.7/39.5	37.7/39.5	37.7/39.5	37.7/39.5	37.7/39.5	37.7/39.5	37.7/39.5	37.7/39.5
Hip room (front/rear)	54.3/47.7	54.3/47.7	54.3/47.7	54.3/47.7	54.3/47.7	54.3/47.7	54.3/47.7	54.3/47.7	54.3/47.7	54.3/47.7	54.3/47.7	54.3/47.7	54.3/47.7	54.3/47.7	54.3/47.7	54.3/47.7
Leg room (front/rear)	41.0/37.8	41.0/37.8	41.0/37.8	41.0/37.8	41.0/37.8	41.0/37.8	41.0/37.8	41.0/37.8	41.0/37.8	41.0/37.8	41.0/37.8	41.0/37.8	41.0/37.8	41.0/37.8	41.0/37.8	41.0/37.8
Shoulder room (front/rear)	57.8/56.4	57.8/56.4	57.8/56.4	57.8/56.4	57.8/56.4	57.8/56.4	57.8/56.4	57.8/56.4	57.8/56.4	57.8/56.4	57.8/56.4	57.8/56.4	57.8/56.4	57.8/56.4	57.8/56.4	57.8/56.4
Cargo length behind rear seat <sup>48</sup>	40.0	40.0	40.0	40.0	40.0	40.0	40.0	40.0	40.0	40.0	40.0	40.0	40.0	40.0	40.0	40.0
Cargo minimum/maximum width <sup>48</sup>	39.4/59.0	39.4/59.0	39.4/59.0	39.4/59.0	39.4/59.0	39.4/59.0	39.4/59.0	39.4/59.0	39.4/59.0	39.4/59.0	39.4/59.0	39.4/59.0	39.4/59.0	39.4/59.0	39.4/59.0	39.4/59.0
Cargo minimum/maximum height <sup>48</sup>	34.5/36.6	34.5/36.6	34.5/36.6	34.5/36.6	34.5/36.6	34.5/36.6	34.5/36.6	34.5/36.6	34.5/36.6	34.5/36.6	34.5/36.6	34.5/36.6	34.5/36.6	34.5/36.6	34.5/36.6	33.2
<b>INTERIOR DIMENSIONS (cu. ft.)</b>																
EPA interior volume (estimated)	136.4	136.4	136.4	136.4	136.4	136.4	136.4	136.4	136.4	136.4	136.4	136.4	136.4	136.4	136.4	136.4
EPA passenger volume (estimated)	98.9	98.9	98.9	98.9	98.9	98.9	98.9	98.9	98.9	98.9	98.9	98.9	98.9	98.9	98.9	98.9
Cargo volume behind front/rear seat <sup>48</sup>	69.8/37.6	69.8/37.5	69.8/37.5	69.8/37.6	69.8/37.6	69.8/37.5	69.8/37.6	69.8/37.5	69.8/37.6	69.8/37.5	69.8/37.5	69.8/37.5	69.8/37.5	69.8/37.5	69.8/33.5	69.8/33.5

## Weights/Capacities

### WEIGHT/CAPACITY

Curb weight (lb.)	3370	3405	3405	3615	3615	3485	3690	3775	3775	3775	3775	3775	3775	3800	4235	4300
Fuel tank (gal.)	14.5	14.5	14.5	14.5	14.5	14.5	14.5	14.5	14.5	14.5	14.5	14.5	14.5	14.5	14.5	14.5
Gross Vehicle Weight Rating (GVWR) (lb.)	4610	4610	4610	4705	4705	4610	4920	4920	4920	4920	4920	4920	4920	4920	5530	5530
Payload (lb.) <sup>66</sup>	1230	1160	1160	1025	1025	1100	1210	1145	1145	1145	1140	1115	1115	1115	1295	1230
Seating capacity	5	5	5	5	5	5	5	5	5	5	5	5	5	5	5	5

### TOWING

Towing capacity (lb.) <sup>41</sup>	1500	1500	1500	3500	3500	1500	1750	1750	1750	1750	1750	1750	1750	1750	2500	2500
-------------------------------------	------	------	------	------	------	------	------	------	------	------	------	------	------	------	------	------

## Tires

### TYPE

All-season mud and snow-rated radials	S	S	S	S		S	S	S		S	S	S	S	S	S	S
Falken <sup>44</sup> All-Terrain tires					S				S							
Temporary spare tire	S	S	S	S	S	S	S	S	S	S	S	S	S	S	S	S

## MPG

### MPG/MPGe

Mileage estimate: MPG <sup>1,4</sup>	27/34/30 (FWD)	28/35/30 (FWD)	28/34/30 (FWD)			27/35/30 (FWD)										
(city/highway/combined)	27/34/30 (AWD)	27/33/29 (AWD)	27/33/29 (AWD)	25/33/28	25/32/28	25/33/28 (AWD)	41/38/39	41/38/39	38/35/37	41/38/39	38/41/39	41/38/39	41/38/39	40/36/38	40/36/38	
MPGe <sup>4</sup>														94	94	
Electric driving range (miles) <sup>5</sup>														42	42	

## DISCLOSURES

1. EPA-estimated 27 city/35 highway/30 combined mpg rating for 2024 RAV4 LE FWD, XLE FWD, XLE Premium FWD and Limited FWD; EPA-estimated 27 city/34 highway/30 combined mpg rating for 2024 RAV4 LE AWD; EPA-estimated 27 city/33 highway/29 combined mpg rating for 2024 RAV4 XLE AWD and XLE Premium AWD; EPA-estimated 25 city/33 highway/28 combined mpg rating for 2024 RAV4 Adventure and Limited AWD; EPA-estimated 25 city/32 highway/28 combined mpg rating for 2024 RAV4 TRD Off-Road. EPA-estimated 41 city/38 highway/39 combined mpg rating for 2024 RAV4 Hybrid LE, Hybrid XLE, Hybrid XLE Premium, Hybrid SE, Hybrid XSE and Hybrid Limited; EPA-estimated 38 city/35 highway/37 combined mpg rating for 2024 RAV4 Hybrid Woodland Edition. Use for comparison purposes only. Your mileage will vary for many reasons, including your vehicle's condition and how/where you drive. See [www.fueleconomy.gov](http://www.fueleconomy.gov). 2. Operability and accuracy of Dynamic Navigation depends on certain factors outside of Toyota's control in order to operate, including cellular network availability, a cellular connection and GPS signal. Without any one or more of these things, operability may be limited or precluded. Services not available in every city or roadway. Use common sense when relying on information provided. Service is subject to change at any time without notice. Paid subscription required after trial (if applicable). Terms of Use apply. Data charges may apply. See *Owner's Manual* and <https://www.toyota.com/connected-services/> for limitations. To learn about Toyota's Connected Services data collection, use, sharing and retention practices, visit <https://www.toyota.com/support/privacy-notice/>. 3. JBL® is a registered trademark of Harman International Industries, Inc. 4. EPA-estimated 94 combined MPGe rating for 2024 RAV4 Prime. MPGe is the EPA-equivalent of gasoline fuel efficiency for electric operation. EPA-estimated 38 combined gas-only mpg. Use for comparison purposes only. Your MPGe/MPG will vary for many reasons, including your vehicle's condition and how/where you drive. See [www.fueleconomy.gov](http://www.fueleconomy.gov). 5. EPA-estimated 42-mile all-electric driving range when fully charged for 2024 RAV4 Prime. Use for comparison purposes only. Your mileage will vary for many reasons, including your vehicle's condition and how/where you drive. See [www.fueleconomy.gov](http://www.fueleconomy.gov). 6. Performance figures are for comparison only and were obtained with prototype vehicles by professional drivers using special safety equipment and procedures. Do not attempt. 7. Apps and services are subject to change at any time without notice. Data charges may apply. Apple CarPlay® functionality requires a compatible iPhone® connected wirelessly to the vehicle. Apple CarPlay® is a registered trademark of Apple Inc. 8. iPhone® is a registered trademark of Apple Inc. All rights reserved. 9. Google, Android, Android Auto, YouTube Music and other marks are trademarks of Google LLC. 10. Wireless use of Android Auto requires a compatible Android 11.0+ phone and compatible active data plan. Check [g.co/androidauto/requirements](http://g.co/androidauto/requirements) for compatibility. Operability depends on network availability, a cellular connection and GPS signal. Services subject to change at any time without notice. Data charges may apply. To learn more, go to <https://www.toyota.com/audio-multimedia/>. To learn more about Toyota's Connected Services data collection, use, sharing and retention practices, please visit <https://www.toyota.com/support/privacy-notice/>. 11. Trial length and service availability may vary by model, model year or trim. Service will automatically stop at the end of your trial subscription period unless you decide to continue service. If you do not wish to enjoy your trial, you can cancel by calling the number below. All SiriusXM services require a subscription, each sold separately by SiriusXM after the trial period. **Service subject to the SiriusXM Customer Agreement and Privacy Policy; visit [www.siriusxm.com](http://www.siriusxm.com) to see complete terms and how to cancel which includes calling 1-866-635-2349.** Some services and features are subject to device capabilities and location availability. All fees, content and features are subject to change. SiriusXM, Pandora and all related logos are trademarks of Sirius XM Radio Inc. and its respective subsidiaries. 12. Toyota Connected Services depend on certain factors outside of Toyota's control in order to operate, including cellular network availability and GPS signal. Without either of these things, operability may be limited or precluded, including access to response center and emergency support. Services vary by vehicle and are subject to change at any time without notice. Requires app download/registration and subscription after trial (if applicable). Terms of Use apply. Data charges may apply. See *Owner's Manual* and <https://www.toyota.com/connected-services/>. For Toyota's Connected Services' data collection, use, sharing and retention practices, please visit <https://www.toyota.com/support/privacy-notice/>. All trials begin on original purchase or lease date of new vehicle, with the exception of Wi-Fi for which trial begins at time of activation. Paid subscription required after trial (if applicable). 13. Safety Connect® depends on factors outside of Toyota's control in order to operate, including cellular network availability and GPS signal. Without either of these things, operability may be limited or precluded, including access to response center and emergency support. Stolen vehicle police report required to use Stolen Vehicle Locator. If subscription includes Automatic Collision Notification, it will activate only in limited circumstances. Services vary by vehicle and are subject to change at any time without notice. Terms of Use apply. Data charges may apply. See *Owner's Manual* and <https://www.toyota.com/connected-services/>. For Toyota's Connected Services' data collection, use, sharing and retention practices, please visit <https://www.toyota.com/support/privacy-notice/>. A Safety Connect® trial is included for up to 10 years on select vehicles with paid Connected Services packages. See your Toyota dealer for details. 4G network dependent. 14. Requires cellular network availability, a cellular connection and GPS signal. May not work in all areas. Service may vary by vehicle and region. See Toyota dealer for details and exclusions. 15. Building and/or parking structures may limit system effectiveness. Stolen vehicle police report required to use Stolen Vehicle Locator. For additional assistance contact the Toyota Customer Experience Center at 1-800-331-4331. 16. Service Connect depends on certain factors outside of Toyota's control in order to operate, including cellular network availability and GPS signal. Without either of these things, operability may be limited or precluded. Information provided is based on the last time data was collected from vehicle and is not real-time data. Services vary by vehicle and are subject to change at any time without notice. Terms of Use apply. Data charges may apply. See usage precautions and service limitations in *Owner's Manual* and <https://www.toyota.com/connected-services/>. To learn about Toyota's Connected Services' data collection, use, sharing and retention practices, please visit <https://www.toyota.com/support/privacy-notice/>. The Service Connect trial is included for up to 10 years. 4G network dependent. 17. Service not available everywhere or in every vehicle. Depends on cellular network availability and GPS signal. Without either of these things, operability may be limited or precluded. Up to 5 devices can be supported using in-vehicle connectivity. Services subject to change at any time without notice. The Wi-Fi Connect trial begins at the time of enrollment and expires the earlier of 3GB data use or the 1-month trial period ends. Paid subscription required after trial. Select models include Integrated Streaming capability, which requires a separate subscription to third-party provider services. Data charges may apply. Valid in the contiguous U.S. and Alaska. Go to <https://myvehicle.att.com/#/toyota/learn?language=en&country=US> for terms and conditions. 18. Apple Music and the Apple logo are trademarks of Apple Inc., registered in the U.S. and other countries. Requires Wi-Fi Connect subscription after trial (if applicable) and your own Apple Music account. 19. Amazon Music, and all related marks are trademarks of Amazon Technologies, Inc. or its affiliates. 20. Drive Connect availability and accuracy depend on certain factors outside of Toyota's control in order to operate, including 4G network availability, a cellular connection and GPS signal. Without any one or more of these things, operability may be limited or precluded. Services subject to change at any time without notice. Requires app download/registration and subscription after trial (if applicable). Terms of Use apply. Data charges may apply. See *Owner's Manual* and <https://www.toyota.com/connected-services/> for limitations. To learn about Toyota's Connected Services data collection, use, sharing and retention practices, visit <https://www.toyota.com/support/privacy-notice/>. Trial period begins on original purchase or lease date of new vehicle. Paid subscription required after trial (if applicable). Terms of Use apply. 21. On select models, Destination Assist will require a trial or subscription to Drive Connect. Availability and accuracy depend on certain factors outside of Toyota's control in order to operate, including a cellular connection and GPS signal. Without either of these, operability may be limited or precluded. Services subject to change at any time without notice. Requires app download/registration and subscription to Drive Connect after trial (if applicable). Terms of Use apply. Data charges may apply. See *Owner's Manual* and <https://www.toyota.com/connected-services/> for limitations. To learn about Toyota's Connected Services data collection, use, sharing and retention practices, visit <https://www.toyota.com/support/privacy-notice/>. The Destination Assist trial period begins on original purchase or lease date of new vehicle. Paid subscription required after trial (if applicable). Terms of Use apply. 22. Intelligent Assistant requires a trial or subscription to Drive Connect. Drive Connect availability and accuracy depend on certain factors outside of Toyota's control in order to operate, including 4G network availability, a cellular connection and GPS signal. Without any one or more of these things, operability may be limited or precluded. Services subject to change at any time without notice. Requires app download/registration and subscription after trial (if applicable). Terms of Use apply. Data charges may apply. See *Owner's Manual* and <https://www.toyota.com/connected-services/> for limitations. To learn about Toyota's Connected Services data collection, use, sharing and retention practices, visit <https://www.toyota.com/support/privacy-notice/>. 23. Cloud Navigation requires a trial or subscription to Drive Connect. Drive Connect availability and accuracy depend on certain factors outside of Toyota's control in order to operate, including 4G network availability, a cellular connection and GPS signal. Without any one or more of these things, operability may be limited or precluded. Services subject to change at any time without notice. Requires app download/registration and subscription after trial (if applicable). Terms of Use apply. Data charges may apply. See *Owner's Manual* and <https://www.toyota.com/connected-services/> for limitations. To learn about Toyota's Connected Services data collection, use, sharing and retention practices, visit <https://www.toyota.com/support/privacy-notice/>. 24. Use only if aware of circumstances surrounding vehicle and it is legal and safe to do so (e.g., do not remotely start a gas engine vehicle in an enclosed space or if vehicle is occupied by a child). Remote Connect depends on certain factors outside of Toyota's control in order to operate, including cellular network availability, a cellular connection and GPS signal. Without any one or more of these things, operability may be limited or precluded. Services subject to change at any time without notice. Digital Key also requires Bluetooth® connectivity. Remote start/stop not available on manual transmission-equipped models. Remote Connect is included with select paid Connected Services packages. See your Toyota dealer for details. Terms of Use apply. Data charges may apply. See *Owner's Manual* and <https://www.toyota.com/connected-services/> for additional details. To learn about Toyota's Connected Services' data collection, use, sharing and retention practices, please visit <https://www.toyota.com/support/privacy-notice/>. 25. Toyota Safety Sense™ effectiveness is dependent on many factors including road, weather and vehicle conditions. Drivers are responsible for their own safe driving. Always pay attention to your surroundings and drive safely. See *Owner's Manual* for limitations. 26. The Pre-Collision System (PCS) with Pedestrian Detection (PD) is designed to determine if impact is imminent and help reduce impact speed and damage in certain frontal collisions involving a vehicle, a pedestrian or a bicyclist. PCS w/PD is not a substitute for safe and attentive driving. System effectiveness depends on many factors, such as speed, size and position of pedestrian or bicyclist and weather, light and road conditions. See *Owner's Manual* for limitations. 27. Dynamic Radar Cruise Control/Full-Speed Range Dynamic Radar Cruise Control is not a substitute for safe and attentive driving. See *Owner's Manual* for instructions and limitations. 28. Lane Departure Alert with Steering Assist is designed to read visible lane markers under certain conditions. It provides a visual/audible alert and slight steering force when lane departure is detected. It is not a collision-avoidance system or a substitute for safe and attentive driving. Effectiveness depends on many factors including road, weather and vehicle conditions. See *Owner's Manual* for limitations. 29. Automatic High Beams operate at speeds above 21 mph. See *Owner's Manual* for instruction and limitations. 30. The Lane Tracing Assist (LTA) lane centering function is designed to read visible lane markers and detect other vehicles under certain conditions. It is only operational when DRCC is engaged. Not available on vehicles with manual transmissions. See *Owner's Manual* for limitations. 31. Road Sign Assist only recognizes certain road signs. See *Owner's Manual* for limitations. 32. May not be compatible with all mobile phones, smart devices, tablets, e-readers, MP3/WMA players and like models. 33. Airbag systems supplement the seatbelts and are designed to inflate only under certain conditions and in certain types of severe collisions. Always wear seatbelt, sit upright in middle and as far back in seat as possible to help decrease risk of injury. Do not put objects in front of an airbag. See *Owner's Manual* for limitations. 34. Do not rely exclusively on the Blind Spot Monitor. Always look over your shoulder and use your turn signal. There are limitations to the function, detection and range of the monitor. See *Owner's Manual* for limitations. 35. Do not rely exclusively on the Rear Cross-Traffic

## DISCLOSURES

Alert system. Always look over your shoulder and use your mirrors to confirm rear clearance. There are limitations to the function, detection and range of the system. See *Owner's Manual* for limitations. **36.** Installation of a tow hitch receiver or other accessories located near the rear bumper or side-door kick sensors may require disabling or removing the kick sensor, and the sensor operation setting in your vehicle should be turned off. Water, weather, dirt, and other conditions also may cause the sensor to not operate properly or to operate unintentionally. See *Owner's Manual* for limitations. **37.** SofTex® is a registered trademark of Toyota Motor Sales, U.S.A., Inc. **38.** At speeds of 9 mph or less, Front and Rear Parking Assist with Automatic Braking (PA w/AB) is designed to assist drivers in avoiding potential collisions with nearby static objects when the vehicle is in Drive or Reverse and approaching crossing vehicles when the vehicle is in Reverse. Do not overly rely on PA w/AB. Always look around outside the vehicle and use mirrors to confirm clearance. Certain vehicle and environmental factors, including an object or vehicle's shape, size and composition, may affect the system's effectiveness. See *Owner's Manual* for additional limitations and details. **39.** Charging may not be compatible with all mobile phones, smart devices, tablets, e-readers, MP3/WMA players and like products. **40.** HomeLink® and the HomeLink® house icon are registered trademarks of Gentex Corporation. **41.** Never tow beyond a vehicle's published towing capacities. Before towing, confirm your vehicle and trailer are compatible, hooked up and loaded properly and that you have any necessary additional equipment. The maximum you can tow depends on base curb weight plus the total weight of any cargo, occupants, and added vehicle equipment. Installation of a tow hitch receiver or other accessories located near the rear bumper may require disabling or removing the kick sensor, and the sensor operation setting in your vehicle should be turned off. Follow all instructions in your *Owner's Manual*. **42.** Do not exceed 120V. See *Owner's Manual* for additional limitations and details. **43.** Extra-cost color. **44.** Falken is a registered trademark of Sumitomo Rubber Industries, Ltd. **45.** This floor mat/floor liner was designed specifically for use in your model and model year vehicle and SHOULD NOT be used in any other vehicle. To avoid potential interference with pedal operation, each mat/liner must be secured with its fasteners. Do not install a floor mat/floor liner on top of an existing floor mat/floor liner. **46.** The Panoramic View Monitor does not provide a comprehensive view of the area surrounding your vehicle. Look around to confirm clearance. See *Owner's Manual* for limitations. **47.** EV Mode lets you operate solely on battery power at low speeds for short distances and in limited circumstances, such as in a parking garage. Different conditions may prevent or limit usage. See your *Owner's Manual* for limitations and details. **48.** Cargo and load capacity limited by weight and distribution. Always properly secure cargo and cargo area. **49.** Dashcam may not record under certain conditions. Use in accordance with applicable laws. See dashcam *Owner's Manual* for details. **50.** Toyota strives to build vehicles to match customer interest and thus they typically are built with popular options and option packages. Not all options/packages are available separately and some may not be available in all regions of the country. See [toyota.com](http://toyota.com) for information about options/packages commonly available in your area. If you would prefer a vehicle without any or with different options, contact your dealer to check for current availability or the possibility of placing a special order. Color(s) depicted may vary based on multiple factors, including ambient lighting and the format in which it is being viewed (e.g., computer, mobile device or print). **51.** A compatible Bluetooth®-enabled phone must first be paired. Phone performance depends on software, coverage and carrier. The Bluetooth® word mark and logos are registered trademarks of Bluetooth SIG, Inc. Use of such marks by Toyota is under license. **52.** When the system is on, Automatic Electric Parking Brake is designed to automatically engage the Electric Parking Brake under limited conditions. It may not hold the vehicle under all conditions and does not function when the vehicle is in Reverse. Automatic Electric Parking Brake is not a substitute for manual use of the Electric Parking Brake. See *Owner's Manual* for additional limitations and details. **53.** When the system is on, Brake Hold is designed to keep the brakes engaged after the driver brings the vehicle to a complete stop. It may not hold the vehicle under certain conditions and does not function when the vehicle is in Reverse. Brake Hold is not a substitute for safe and attentive driving. See *Owner's Manual* for limitations. **54.** Rated for 12 volts/10 amps. See *Owner's Manual* for additional limitations and details. **55.** Toyota app requires an active Remote Connect trial or subscription. **56.** Vehicle Stability Control is not a substitute for safe and attentive driving practices. Factors including speed, road conditions, weather and steering input can affect whether VSC will be effective. See *Owner's Manual* for limitations. **57.** Smart Stop Technology® will reduce power to help the brakes bring vehicle to a stop during certain contemporaneous brake and accelerator pedal applications. See *Owner's Manual* for limitations. **58.** The backup camera does not provide a comprehensive view. Always look over shoulder and use outside mirrors. See *Owner's Manual* for limitations. **59.** The Tire Pressure Monitor System alerts the driver when tire pressure is critically low. For optimal tire wear and performance, tire pressure should be checked regularly with a gauge; do not rely solely on the monitor system. See *Owner's Manual* for limitations and details. **60.** When Vehicle Proximity Notification System is active, it is the driver's responsibility to maintain a lookout for pedestrians, cyclists, other cars and objects and to drive the vehicle in a safe and attentive manner to avoid making contact. **61.** Trailer-Sway Control (TSC) is an electronic system designed to help the driver maintain vehicle control under adverse conditions. It is not a substitute for safe driving practices. Factors including speed, road conditions, weather and driver steering input can all affect whether TSC will be effective in preventing a loss of control. See *Owner's Manual* for additional limitations and details. **62.** Hill Start Assist Control is designed to minimize backward rolling on steep ascents. Not a substitute for safe driving judgment and practices. Speed, grade, surface conditions, driver input, etc., can all affect HAC function. See *Owner's Manual*. **63.** Downhill Assist Control is designed to help driver maintain vehicle control and speed on steep, downhill descents and is not a substitute for safe driving judgment and practices. Factors including speed, grade, surface conditions and driver input can affect the DAC's ability to prevent loss of control. See *Owner's Manual* for additional limitations. **64.** The engine immobilizer is a state-of-the-art anti-theft system that is initiated when you insert your key into the ignition switch or bring a Smart Key fob into the vehicle. The engine will only start if the code in the transponder chip inside the key/fob matches the code in the vehicle's immobilizer. The transponder chip is embedded in the key/fob and can be costly to replace. If you lose a key or fob, your Toyota dealer can help or go to [www.aloa.org](http://www.aloa.org) to find a qualified locksmith in your area who can perform high security key service. **65.** Before towing, confirm Stop and Start Engine System is disengaged (V6 gas models only). **66.** Payload includes the weight of occupants, cargo and options and is limited by weight distribution.

Toyota strives to build vehicles to match customer interest and thus they typically are built with popular options and option packages. Not all options/packages are available separately and some may not be available in all regions of the country. See [toyota.com](http://toyota.com) for information about options/packages commonly available in your area. If you would prefer a vehicle without any or with different options, contact your dealer to check for current availability or the possibility of placing a special order.

Color(s) depicted may vary based on multiple factors, including ambient lighting and the format in which it is being viewed (e.g., computer, mobile device or print).

Some vehicles are shown with available equipment. Seatbelts should be worn at all times. For details on vehicle specifications, standard features and available equipment in your area, contact your Toyota dealer. A vehicle with particular equipment may not be available at the dealership. Ask your Toyota dealer to help locate a specifically equipped vehicle.

All information presented herein is based on data available at the time of posting, is subject to change without notice and pertains specifically to mainland U.S.A. vehicles only. Vehicles shown may be prototypes, shown using visual effects and/or shown with options. Actual models may vary.



**Mobility**

For Toyota Mobility program details, go to [www.toyota.com/mobility](http://www.toyota.com/mobility) or call the Toyota Brand Engagement Center at 1-800-331-4331